

THEORY OF UNIVERSALITY

Kasibhatla Surya Narayana ¹

(SME – Physics, BYJU’S, IBC Knowledge Park, Bannerghatta Main Road, Bangalore-560029, India)

ABSTRACT :

This theory is an attempt to describe the universal phenomena like space, time, matter and energy as an inter-relationship bound by a newly discovered force named as the universal force. The universal force is shown to be the force of gravitation, electricity, magnetism, strong nuclear and weak nuclear forces. I believe any other force, hitherto fore not discovered; also, can be explained in terms of this universal force.

Liberal use of wave-particle duality, relativity, quantum concepts is made to achieve a harmonious and comprehensive synthesis of all the existing beliefs in physics into a new theory with some new concepts added here and there. While adding new concepts, enormous care has been taken to ensure that the existing beliefs are not contradicted. Moreover, the new concepts are proved to be correct theoretically by deriving the constants like G , σ , etc.,

Keywords : Space, Time, Matter , Energy, Universal Force

1. Email : ksuraxn@yahoo.co.in

CONTENTS

1. INTRODUCTION
2. POSTULATES
3. INDENTATIONS AND EQUATIONS
4. PROOF
5. CONCLUSIONS
6. ANNEXURE – I
7. ANNEXURE – II
8. ANNEXURE – III
9. ANNEXURE – IV
10. ANNEXURE – V
11. ANNEXURE – VI
12. ACKNOWLEDGEMENT
13. REFERENCES

I. INTRODUCTION

UNIVERSE & UNIVERSALITY

From time immemorial, the struggle to understand the phenomena surrounding us, has been our chief occupation, second only to the struggle to survive. After successfully surviving the predators and harmful wild creatures, we have started building secure measures for food, cloth and shelter. Nevertheless, the natural calamities like floods, fire, earthquakes, and disease continue to wreak havoc with all the life and human life in particular. Death and disease could not be overcome fully by all the scientific measures invented so far.

We have started exploring our immediate environment in an attempt to understand the natural phenomena surrounding us. This attempt to understand is only to build safety and survival from the onslaught of the Nature's fury and to harness Nature's forces to the benefit of humankind. In the process, various gods and goddesses are proposed to be the cause of various phenomena. Sometimes, sacrifices are offered to gain the favor of the deities and worship also is done to please the gods and goddesses. For example, many rituals are done to get timely rain and to reap a good harvest. Worship is done for timely sunrise also. Slowly, we have realized the Sun and the Moon follow a regular pattern of rise and set whether a worship is done or not, and whether a sacrifice is made or not. We also, came to know that the celestial bodies behave in a regular pattern. Hence, the proposal came that the Earth was the centre of the world and the celestial bodies went around the Earth according to this pattern. Later investigations revealed that the Earth and the planets are spherical bodies which went around the Sun. Further, it was revealed by Newton's gravity and confirmed by Einstein's' relativity that gravity is indeed the major force acting among the celestial objects including our solar system.

Moreover, we have generalized the natural phenomena in the form of laws; because, they seem to follow the same behavior wherever and whenever we observe. Based on this observation, certain theories are proposed as the explanation for the behavior of the phenomena on the Earth and with regard to the celestial objects. A theory is a set of assumptions and rules, which

describes the way the celestial bodies behave including the Earth on which we live. If the predictions made by the theory are observed in practice and also, if the theory can answer all the related questions, then, that theory is deemed as valid and used for further understanding of the universe.

As time progresses, better and more refined theories of the universal behavior are put forth for accurate, complete and comprehensive understanding of the universe we live in. Our ultimate goal is a total understanding of the universe. With the help of such understanding we can protect our life along with Solar System and Milky Way Galaxy against a possible, natural, cosmic calamity. So far, our assumption about the universe is that the laws which are valid on the Earth and the Solar System are also universally valid. This universality of the laws is at the basic core of the 'Theory of Universality' developed by the author.

THEORY OF UNIVERSALITY

This theory is an attempt to describe the universal phenomena, the inter-relationships among the four fundamental quantities space, time, matter and energy with a precise and accurate mathematical quantification of the relationships. In the process, a force, named as universal force pervading the universe; and, which in turn manifests as every other force locally or universally present is also described. That is to say there is only one force, the universal force. Every/any other force is a manifestation of universal force.

Liberal use of Einstein's relativity, deBroglie's wave particle duality, Planck's quantum radiation is used to synthesize all the existing beliefs into a harmonious and comprehensive "**Theory of Universality**".

II. POSTULATES

1. Space is the medium using which light travels.
2. Speed of light is the critical attainable speed in our universe.
3. The universe when the projection of time (4th dimension) is taken on a three dimensional medium, is like the two-dimensional sheet (shadow) model of a three - dimensional object in 2-dimensions.
4. Nothing in the universe can be fully destroyed.
5. Space, Time, Matter and Energy are inter-related. They exist together in anywhere and everywhere in the universe. None of the four fundamental quantities like space, time, matter and energy is uniquely existent in the universe.
6. There exists a very powerful force to be named as the universal force, because of which other forces like gravitation, electromagnetism, strong and weak nuclear forces manifest.
7. The universal force condenses space into matter.
8. Every physical law has some inertia of existence which is quantifiable in space-time-matter-energy frame of the universe.
9. Any physical law can be created and preserved with a certain inertia in space-time-matter-energy frame.

10. The truth of the universe keeps changing depending on where, how and at what time the observation for a certain truth is made with an inclination to reach experimental proof of theoretical conjectures.

In all, there are ten vital formulae; six of them describe the relationship among space, time, matter and energy; four of them describe the relationship between universal force and space, time, matter and energy.

III. INDENTATIONS AND EQUATIONS

Assume that there is a particle of mass m , Compton wave length ℓ ; let, the energy stored in it be E . Assume, the universal force utilized in creating the particle is F . Here, let me assert that the universal force which created the particle also bestows on it a time of ' t ', t is the time of inertia of existence the particle will have during which its changes become nil. Any change anywhere in the universe manifests as time. The time inertia (also called laziness of the particle) between two successive changes is ' t '. Then the 10 (ten) formulae giving the relationship among space, time, matter and energy and F are as follows:

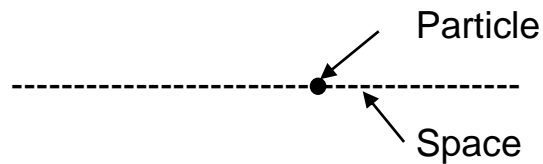
1. $E = mc^2$ Einstein's mass-energy equivalence
2. $\ell = h/mc$ space-mass equivalence
3. $t = h / mc^2$ mass-time equivalence
4. $E = hc / \ell$ Energy-space equivalence
5. $E = h / t$ Energy-time equivalence
6. $\ell = c t$ space-time equivalence
7. $F = hc / \ell^2$ Force-space equivalence
8. $F = h / c t^2$ Force-time equivalence
9. $F = E^2 / c h$ Force-energy equivalence
10. $F = m^2 c^3 / h$ Force-mass equivalence

Where h = Planck's constant ; c = speed of light

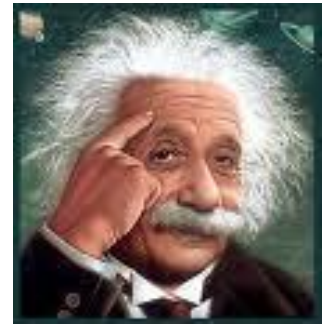
Derivation of the equations:

1. $E = m c^2$ is the popularly already- known equation of energy-mass equivalence of Einstein's

$$2 . \ell = h / m c$$



Einstein



Space, is like a sheet in the 4th dimension of time, That is, assuming we have entered the 4th dimension of time, and, we are able to perceive past, present, and future as one; then, the 3 dimensional space, would look like 2-dimensional shadow in the time frame. The universal force F condenses space into matter. Suppose the energy spent / created in creating a particle of mass m is E. Suppose, the Compton wave length of the particle is ℓ , with a time inertia (also called laziness of the particle) of t. The mass - space vibration within the particle moves at a speed c, speed of light, to achieve simultaneity everywhere. Then, by wave - particle duality (of Louis d' Broglie):

$\ell = h / m c$ - this is true in case of proton.

m = rest mass of neutron or proton = 1.674×10^{-27}

h = Planck's constant = 6.626×10^{-34}

ℓ = proton Compton wavelength works out to be 1.319×10^{-15}

by above equation of $\ell = h / m c$; which agrees with the experimental value of 1.321441×10^{-15} --- proved ! (all in MKS units). Similarly, in the case of an electron; $\ell = h / m c$.

$$m = 9.109 \times 10^{-31} \quad c = 3 \times 10^8 \quad h = 6.626 \times 10^{-34}$$

ℓ works out to be 2.424×10^{-12} which is Compton wavelength of an electron which agrees with experimental result of $2.4263107 \times 10^{-12}$ – proved !

So , the equation $\ell = h / m c$; where ℓ is Compton wavelength ; m is the rest mass is true in the case of proton / electron.

$$3 . t = h / m c^2$$

By Planck's principle of Quantum radiation of energy; this very particle behaves like an energy packet of wavelength ℓ (ℓ is the Compton wave length) and time t.

$$E = m c^2 = h \nu = h / t \quad \rightarrow t = h / m c^2$$

This implies that for an electron $m = 9.109 \times 10^{-31}$ kg;

$t = 8.081 \times 10^{-21}$ (all in MKS units everywhere) is the laziness or time inertia. This means that between two successive changes to an electron; there must necessarily be a period of 8.081×10^{-21} seconds. After which period only, a change can be enforced on an electron. So, it is impossible to change an electron in position or pace or state faster than this. If so, it will no longer be electron.

4. $E = h c / \ell$. We already know that $E = h \nu$ (Planck's theory). But, $\nu = c / \ell$, ν is the frequency of the energy packet contained in the particle. $\rightarrow E = h c / \ell$

5. $E = h / t$. This is simple; because, $E = h \nu$; and $\nu = 1 / t \rightarrow E = h / t$.

Note: it is assumed that a particle of time inertia t ., will also behave like a wave of cycle time ' t '., when converted into energy E . therefore, $E = h / t$.

6. $\ell = c t$. Now, the particle has mass ' m ' in all directions of observation, and points of observation within the particle. This is possible only when the mass-space vibration within the particle moves at the speed of light (to ensure simultaneity) of wavelength ℓ (Compton wave length).

$$\ell / t = c \rightarrow \ell = c t$$

7. $F = h c / \ell^2$ – when universal force F ; acts on the particle to create a particle of Compton wave length ℓ ; the energy spent / created is;

$$F \cdot \ell = h \nu = h c / \ell \rightarrow F = h c / \ell^2$$

A force of universal force = 3.395×10^{-2} Newtons is spent in creating the particle electron.

8. $F = h / c t^2$. It is assumed that the time inertia of a particle is the same as its cycle time when converted into energy-wave. This means $\ell = c t$; applied to the equation – 7 gives:

$$F = h c / \ell^2 = h c / c^2 t^2 = h / c t^2 . \rightarrow F = h / c t^2$$

9. $F = E^2 / c h$. Energy spent in creating a particle of Compton wave length ℓ , from the basics of physics is $E = F \cdot \ell$. Therefore, $F = E^2 / c h$
10. $F = m^2 c^3 / h$. from equation -9, we have $F = E^2 / c h$. We know that, $E = m c^2$. therefore, $F = m^2 c^3 / h$.

IV. PROOF

Proof that my theory is correct and valid follows. I will theoretically derive the value of 'G' (gravitational constant) and show that this coincides with experimental value.

Consider the gravitational constant as G, and take the gravitational force between the Sun and Earth as F. We know that

$$F = \frac{G M_1 M_2}{R^2}$$

where $M_1 =$ mass of Sun

$M_2 =$ mass of Earth

$R =$ mean distance between the Earth and the Sun

But, according to my theory of universality, the universal force exerts a force of $m^2 c^3 / h$ for the particle. In the case of Sun, this universal force of the various atoms is compensated by various layers of the particles within the Sun; except the upper – most layer. In the case of upper-most layer, half of the tension created by the universal force on space appears as gravitation towards the outer space away from the Sun, the other half is turned inwards..... and is duly compensated within. No. of atoms (mostly Hydrogen) on the outermost layer of Sun is

$$\frac{4 \pi R_1^2}{4 \pi r_1^2} : \text{ where } R_1 \text{ is the outermost layer's radius on Sun}$$

and r_1 is the mean free path of the Hydrogen atom on the Sun's surface

The comprehensive force released by this on the outer space away from the Sun is :

$$\frac{4 \pi R_1^2}{4 \pi r_1^2} \cdot \frac{m^2 c^3}{h} \cdot \frac{1}{2} : \text{ the factor } \frac{1}{2} \text{ appears because the other half is}$$

turned within. Therefore, the gravitational force exerted by the Sun is :

$$\frac{1}{2} \cdot \frac{4 \pi R_1^2}{4 \pi r_1^2} \cdot \frac{m^2 c^3}{h}$$

The force experienced by the Earth due to the force emanating from the Sun is

$$\frac{4 \pi R_2^2}{4 \pi R^2} \text{ fraction of the total force } \Rightarrow F = G \frac{M_1 M_2}{R^2} = \frac{1}{2} \cdot \frac{4 \pi R_1^2}{4 \pi r_1^2} \cdot \frac{m^2 c^3}{h} \cdot \frac{4 \pi R_2^2}{4 \pi R^2}$$

Where R_2 is the radius of the Earth; R is mean distance between the Sun and the Earth. The fraction only is experienced because that is the area covered by the Earth. If the total area of $4 \pi R^2$ from the sphere encompassing the Earth is considered. Again, half of this is not considered because, this is fully experienced by the Earth and therefore, this is the gravitational force exerted by the Sun and experienced by the Earth from the Sun. (Actually, volume and density should be taken. As an approximation area is taken)

Note: all values are taken in MKS units everywhere.

$$\Rightarrow G = \frac{R^2}{M_1 M_2} \cdot \frac{1}{2} \cdot \frac{4 \pi R_2^2}{4 \pi R^2} \cdot \frac{m^2 c^3}{h} \cdot \frac{4 \pi R_1^2}{4 \pi r_1^2} \text{ (A)}$$

r_1 = mean free path of the Hydrogen atom on the Sun's surface @ nearly 6000° K. Mean free path of air @ 288° K = 6.6317×10^{-8} . So, for Hydrogen atom approximately at temperature of 6000° K.

$$r_1 = 6.6317 \times 10^{-8} \times \frac{6000}{288} \times \frac{28.986}{1} = 4.14481 \times 10^{-5} \text{ metres}$$

(28.986 is the average air weight : 1 is Hydrogen atomic weight on Sun's surface @ 6000° K. Hydrogen in that environment is in atomic state and not in molecular state. It is assumed that mean free path is directly proportional to the temperature and inversely proportional to the atomic weight).

In the derivation of the gravitational constant G , the factor 1 was taken for the universal force on the outer space atoms of Hydrogen on SUN; because, this factor 1 = atomic weight of Hydrogen atom for proton was taken in the derivation of the mean free path for Hydrogen atom on the sun's surface (atmosphere) @ 6000° K, because the Hydrogen is in atomic state and not in molecular state.

r_1 = mean free path of Hydrogen on sun's Surface = 4.14481×10^{-5}

R_2 = Radius of Earth = 6.371×10^6

R_1 = Radius of Sun = 6.960×10^8

m = mass of the proton = 1.674×10^{-27}

c = Speed of light = 3×10^8

h = Planck's constant = 6.626×10^{-34}

M_1 = Mass of Sun = 1.99×10^{30}

M_2 = Mass of Earth = 5.977×10^{24}

Substituting the above values for $r_1, R_2, R_1, m, c, h, M_1, M_2$ in

equation – (A) above;

we get $G = 5.871 \times 10^{-11}$

which agrees with the experimental value of 6.673×10^{-11} .

The slight discrepancy can be due to the various assumptions and approximations and the too simple an approach taken for evaluating the mean free path of Hydrogen atom on the Sun's surface.

Hence, my theory is proved to be right!

Derivation of Stephen's constant : (MKS Units)

To prove my theory is right and valid once again :

Consider the total force emanating from the sun is

$$F = \frac{1}{2} \cdot \frac{R_1^2}{r_1^2} \cdot \frac{m^2 c^3}{h}$$

according to my theory.

Where $r_1 = 4.144181 \times 10^{-5}$ is the mean free path of Hydrogen on Sun's atmosphere.

But, according to my force – energy equivalence,

$$F = E^2 / ch \Rightarrow E = \sqrt{Fch} \Rightarrow E = \sqrt{\frac{1}{2} \frac{R_1^2}{r_1^2} \frac{m^2 c^3}{h} ch} = \frac{1}{\sqrt{2}} \cdot \frac{R_1}{r_1} \cdot mc^2$$

: because of this energy outpouring away from the Sun ; the maximum power emanating from the Sun is E / t_p where t_p is the time inertia (or laziness of

proton). t_p is the minimum time required for releasing energy by Sun's outermost Hydrogen surface. Therefore, maximum power released by the sun is ,

$$P = E / t_p = \frac{1}{\sqrt{2}} \cdot \frac{R_1}{r_1} \cdot \frac{mc^2}{t_p}$$

where $t_p = h / mc^2$ according to my theory.

$$\text{Hence } P = \frac{1}{\sqrt{2}} \cdot \frac{R_1}{r_1} \cdot \frac{m^2 c^4}{h} \quad \text{--- (B)}$$

But, according to Stefan-Boltzmann law of radiation : the total energy , E , of all wave lengths radiated per second per square meter by a full radiator at temperature T to surroundings at temperature T_0 is given by $E = \sigma (T^4 - T_0^4)$, where σ is Stefan's constant. The maximum power released by Sun (considered as full radiator) at any time is $\sigma (T^4 - T_0^4) \times 4\pi R_1^2$ --- (C)

where $4\pi R_1^2$ is the total surface area of Sun.

Now , $T_0 = 0^0$ K (approximately)

$$\text{Therefore, from (B) \& (C) } \sigma = \frac{1}{4\pi T^4} \cdot \frac{1}{\sqrt{2}} \cdot \frac{1}{r_1 R_1} \cdot \frac{m^2 c^4}{h}$$

Substituting values for T , R_1 , r_1 , m , c , h ; we get

$$\sigma = 5.314 \times 10^{-8} ; \text{ which agrees with the experimental value of } \sigma = 5.66969 \times 10^{-8} , \text{ hence, my theory is RIGHT.}$$

The slight discrepancy can be due to the approximations made in T , T_0 , r_1

Values used are :

$$T = \text{Surface temperature of Sun} = 6000^0 \text{ K}$$

$$T_0 = \text{Temperature of surroundings (approximately) } 0^0 \text{ K}$$

$$m = \text{mass of proton/ neutron (rest mass)} = 1.674 \times 10^{-27} \text{ kg}$$

$$c = \text{speed of light} = 3 \times 10^8 \text{ R}_1 = \text{radius of sun} = 6.960 \times 10^8$$

$$r_1 = \text{mean free path of Hydrogen on sun's surface} = 4.14481 \times 10^{-5}$$

$$h = \text{Planck's constant} = 6.626 \times 10^{-34}$$

Further Proof :

Here, follows further proof that my theory is right and valid . I will now theoretically derive the values of ϵ_0 , μ_0 , e and show that they coincide with the experimental results.

ϵ_0 = free space permittivity

μ_0 = free space permeability

e = elementary charge of electron/proton

First, derivation of ϵ_0

One more postulate in my theory:

Charge e , is same as mass m_e of electron on its classical radius r_e . Electron's Compton wavelength is the wavelength it behaves (is observed) as a wave λ_e . Electron behaves like a mass of m_e (rest mass) , wavelength (λ_e) of Compton wavelength , laziness $t_e = h / m_e c^2$ and an energy packet of $m_e c^2$, and a charge e all at the same time and also like a particle. That is e , m_e , r_e , λ_e , E_e are all synonymous at the same time. What you get is what you are observing for. Energy due to electronic charge =

$$= \frac{e^2}{4 \pi \epsilon_0 \epsilon_r r_e} = m_e c^2 \quad (\text{mass - energy})$$

$$\rightarrow \epsilon_0 = \frac{1}{4 \pi} \cdot \frac{e^2}{r_e} \cdot \frac{1}{m_e c^2} = \frac{1}{4 \pi} \cdot \frac{(1.602 \times 10^{-19})^2}{2.817 \times 10^{-15}} \cdot \frac{1}{9.109 \times 10^{-31}} \cdot \frac{1}{9 \times 10^{16}}$$

$$\epsilon_0 = 8.842 \times 10^{-12} \text{ Fm}^{-1} \dots\dots\dots \text{which agrees with experimental value of } 8.854 \times 10^{-12} \text{ Fm}^{-1} \dots\dots\dots \text{PROVED !}$$

Which again proves that the assumption in the postulate is true and valid.

Now, to derive the value of μ_0 (free space permeability):

We know; by using Ampere's law; the force of electron and proton as elements of current is $(\mu_0 e^2 c^2) / 4 \pi r^2$; where r is the Hydrogen covalent radius; which means the mean distance between proton and electron (i.e., 28pm). According to my theory of universality, the force (universal force)

due to a particle of mass m is $\frac{m^2 c^3}{h}$

the force due to proton in Hydrogen is $(m)^2 c^3 / h$ from the nucleus ; the force experienced by electron in the orbit would be

$$\frac{m^2 c^3}{h} \cdot (4/3 \pi r_e^3) / (4/3 \pi r^3)$$

Where r_e is the classical radius of electron and r is the covalent radius of Hydrogen. Therefore,

$$\frac{\mu_0 e^2 c^2}{4 \pi r^2} = \frac{m^2 c^3}{h} \frac{r_e^3}{r^3}$$

Substituting , the values for all except μ_0 ; we get,

$$\mu_0 = 1.0637748 \times 4 \pi \times 10^{-7} \text{ MKS units.}$$

Which agrees with the experimental value of $4 \pi \times 10^{-7}$ for μ_0

And μ_r is approximately 1 (one) for Hydrogen. Hence, my theory is once again proved to be right and valid. Note: the universal force due to electron is considered negligible. Hydrogen in ICAO atmosphere is considered, because only then μ_r is 1. Value of e : Once again, consider the electronic charge – energy ;

and equate it to mass-energy $m_e c^2 = e^2 / (4 \pi \epsilon_0 r_e)$

According to my theory charge and mass are same at the same time

Substitute $\epsilon_0 = 8.854 \times 10^{-12}$ in MKS units and we get $e = 1.603 \times 10^{-19}$

Which agrees with experimental result of 1.602192×10^{-19} . I have derived G , σ , ϵ_0 , μ_0 , using my theory and they have all agreed with experimental results. Hence, my theory is right and valid including the postulates made therein. In the derivation of μ_0 Electron's classical radius and volume is considered ; because electron is taken as one continuous and cohesive particle ; in which case, area is not applicable.

Discoveries : (PREDICTION – 1) :

1. I have made a discovery that the Earth is exerting a force on the sun which is nearly 20,000 billion times (2×10^{13}) the force which the Sun is exerting on the Earth. The force exerted by Sun on the Earth is manifesting mostly as gravitation.

Force emanating from Sun and exerted on the Earth

$$F_1 = \frac{R_1^2}{r_1^2} \cdot \frac{m_1^2 c^3}{h} \cdot \frac{R_2^2}{R^2} \cdot \frac{1}{2}$$

Similarly emanating from Earth and exerted on the Sun

$$F_2 = \frac{R_2^2}{r_2^2} \cdot \frac{m_2^2 c^3}{h} \cdot \frac{R_1^2}{R^2} \cdot \frac{1}{2}$$

(according to my theory). $\frac{F_2}{F_1} = \frac{m_2^2 r_1^2}{m_1^2 r_2^2} \dots\dots\dots \textcircled{1}$

m_1 = elementary particle mass of Hydrogen on Sun's surface.
= 1.674×10^{-27}

r_1 = mean- free path of Hydrogen on sun's surface = 4.14481×10^{-5}

Regarding the Earth's surface sans the atmosphere,

Nearly 75% is water ; 25% is sand which is mostly silicon

Silicon density = 2300 ; water density = 1000

Average surface density = 1325

Silicon molecular weight= 28.09

Water molecular weight = 18.02

Average surface molecular radius r_2 is given by

$$r_2^3 = \frac{(0.75 \times 18.02 + 28.09 \times 0.25) \times 1.674 \times 10^{-27}}{1325} \times \frac{3}{4\pi}$$

$$r_2 = 1.83 \times 10^{-10} \text{ (Approximate)}$$

$$m_2 / m_1 = 0.25 \times 28.09 + 0.75 \times 18.02 = 20.5375$$

$$F_2 / F_1 = 2163.7258 \times 10^{10}$$

Substituting m_1 , r_1 , m_2 , r_2 in equation $\textcircled{1}$ above; we get

$$F_2 / F_1 = 2163.7258 \times 10^{10}$$

which is nearly 20,000 billion times ; or 2×10^{13} times

The Earth exerts a force which is nearly 20,000 billion times (the gravitational force of sun on the Earth) on the sun. The sun is fusing with Hydrogen as the fuel. The enormous force (nearly 20,000 billion times the sun's gravity on

earth), which the Earth is exerting on the Sun helps Hydrogen to fuse and helps sun to remain a shining star. The planets may be dragging Sun in the Galaxy.

2 . Planets are drifting away from the sun . (REFER ANNEXURE – II)

The energy released by sun causes space of equivalent amount to be released at the same time. Because of this release of space , all planets are drifting away from the sun as given below.

$$E = \frac{hc}{\ell} \Rightarrow \ell = \frac{hc}{E} = \frac{hc}{\sqrt{Fch}} \quad ; \text{ and } v \text{ is the speed of drift of the space}$$

$$\left[t_p = \frac{h}{mc^2} \right] \Rightarrow v = \frac{mc^3}{\sqrt{Fch}} = \frac{mc^3}{\frac{1}{\sqrt{2}} \frac{R_1}{r_1} mc^2} = \sqrt{2} \cdot \frac{r_1}{R_1} c \Rightarrow \boxed{v = \sqrt{2} \frac{r_1}{R_1} c}$$

Where r_1 , is the mean free path of Hydrogen atom on the surface of the sun and R_1 is the radius of the sun . This is approximately 2.4382×10^{-5} m/sec .

Which is approximately 768 m / year. $v = 768$ m/year. This is the rate of Compton wave length of space released radially at the solar– corona,(solar–corona is considered; because inside this Solar Corona, the atmosphere interferes with space released).An accurate derivation is given in Annexure – II

V. CONCLUSIONS

1. The discrepancy in evaluating G & σ as compared to the experimental result is negligible.
2. It is possible to create any physical law and give it a certain amount of inertia in space – time – matter - energy frame.
3. It is possible to create planets , stars , satellites to the planets and it is equally possible to change and control the movement or momentum of any celestial body in the universe.
4. Reflection of light in a mirror is due to the nuclei gravity of the mirror. Incidentally, every neutron behaves like a black hole. The neutron gravity (super gravity) bends light in a U – turn . There is a time mirror on the surface of neutron because of which ; the reflection (image) looks equidistant from the mirror as the object.
5. Refraction of light is the bending of light by neutrons (black holes) within the atom .

6. The black hole surface acts like a time mirror showing future as past.
7. Gravity nullification can be achieved for gravity - zero travel.
8. Every object in the universe displays time inertia (also called laziness) ; which is quantifiable as $t = h / m c^2$
9. Intelligence = memory X thinking (a product), whenever either becomes zero ; Intelligence becomes nil .
10. There is extra-terrestrial intelligent life.
11. There is time crunch in the universe as in the case of lightning. The same event is described by light faster than sound. Sound is not only coming after lightning is seen; but, also the thunder is heard for longer time than the time lightning is seen.
12. The laziness of any physical body is $t = h/mc^2$; the duration during which no change can be enforced on the particle or body in any manner whatsoever.
13. Thought (impulsive thought) is a gravity wave.
14. Cosmic waves can influence our intelligence, memory and thinking.
15. Earth moves or any celestial body moves in jerks and not in a continuous manner..... similar to Planck's hypothesis that energy moves in Quanta.
16. Any event is described by light, sound, and others over different durations of time.
17. Smell and taste travel like sound, energy, light etc.,
18. Thinking can be known in advance (or at the same time) if we can sense gravity waves.
19. We can achieve vehicle – less travel other than walking, running, jumping, falling and crawling...Etc.,
20. We can predict certain events (all, if required)
21. There is no perceptible boundary to the universe in space-time-matter-energy frame.
22. We can generate thinking in others along the pattern we desire using gravity waves.

23. Time moves in a circle called circle of time. Any single point on it is present ; when we move in time by perception of changes around us ; we go into past and future at the same time from present. Any change anywhere manifests as time.
24. Time and passage of time are same.
25. Absolute time is maintained by black hole.
26. There is no zero time except on black hole.
27. All forces are components of the universal force ; manifestation of universal force

New Discovery: The Sun and the planets in our Solar System are going at a speed in the universe higher than the speed of light.

Observations

1. The Earth going round the Sun has a speed (in an absolute sense) higher than the speed of the Sun , whatever the speed of the Sun maybe. (That is the Earth has its own speed plus the speed of the Solar System along with the speed of the Sun).
2. The starting mass of all celestial bodies is same.
3. A celestial body (like the Earth) going at a speed higher than the speed of the Sun has a mass less than the mass of the Sun. This is possible only if both are going at a speed higher than the speed of light as per equation.

$$m = \frac{m_0}{\sqrt{1 - \frac{v^2}{c^2}}}$$

Conclusion: This means that we are in a – v e World . The world of anti-matter.

Incidentally there is a massive black hole in the Centre of the Universe around which the rest of the Universe is going around. The black hole is the window to the + v e world.

Proof:

Assume:

 M = Mass of the Sun c = Speed of light M_2 = Mass of mercury M_1 = Mass of Venus T_2 = Period of Rotation of Mercury Round the Sun T_1 = Period of rotation of Venus round the Sun V_2 = Speed of the planet mercury round the sun V_1 = Speed of the planet Venus round the sun M_0 = Starting mass of all the celestial bodies in the Solar system R_2 = Mean distance of mercury from the Sun R_1 = Mean distance of Venus from the sun

[Refer Annexure – IV]

Then ,

$$M = \frac{M_0}{\sqrt{1 - \frac{v^2}{c^2}}} \text{ and } M_1 = \frac{M_0}{\sqrt{1 - \frac{(v+v_1)^2}{c^2}}} \text{ and } M_2 = \frac{M_0}{\sqrt{1 - \frac{(v+v_2)^2}{c^2}}}$$

$$\Rightarrow M \sqrt{1 - \frac{v^2}{c^2}} = M_1 \sqrt{1 - \frac{(v+v_1)^2}{c^2}} = M_2 \sqrt{1 - \frac{(v+v_2)^2}{c^2}}$$

$$\Rightarrow (M^2 - M_1^2) v^2 - 2 v v_1 M_1^2 - M_1^2 v_1^2 - c^2 (M^2 - M_1^2) = 0 ; \text{ we know that}$$

$$M^2 \gg M_1^2 \text{ i.e., } M^2 - M_1^2 = M^2$$

$$\Rightarrow M^2 \cdot v^2 - 2 v v_1 M_1^2 - (M_1^2 v_1^2 + c^2 M^2) = 0 ; \text{ Approx}$$

$$\Rightarrow v = \frac{2v_1 M_1^2 \pm \sqrt{4 v_1^2 M_1^4 + 4M^2 (c^2 M^2 + M_1^2 v_1^2)}}{2M^2} ; c^2 M^2 \gg M_1^2 v_1^2$$

$$\Rightarrow v = \frac{2v_1 M_1^2 \pm \sqrt{4 v_1^2 M_1^4 + 4c^2 M^4}}{2M^2} \text{ Approx ; } c^2 M^4 \gg v_1^2 M_1^4$$

$$\Rightarrow v = v_1 \frac{M_1^2}{M^2} \pm c = 2.0993 \times 10^{-7} \pm c \begin{cases} v_1 = 0.35032 \times 10^5 \text{ m/s} = \frac{2\pi R_1}{T_1} \\ M = 1.989 \times 10^{30} \text{ kg} \\ M_1 = 4.869 \times 10^{24} \text{ kg} \end{cases}$$

Now, I will re-derive the Kepler's laws of planetary motion to prove that all the above assumptions are correct.



$$M_1 = \frac{M_0}{\sqrt{1 - \frac{(v+v_1)^2}{c^2}}}; M_2 = \frac{M_0}{\sqrt{1 - \frac{(v+v_2)^2}{c^2}}}$$

$$\Rightarrow M_0^2 = M_1^2 \left(1 - \frac{(v+v_1)^2}{c^2} \right) = M_2^2 \cdot \left(1 - \frac{(v+v_2)^2}{c^2} \right)$$

$$\Rightarrow M_1^2 (2v v_1 + v_1^2) = M_2^2 \cdot (2 v v_2 + v_2^2); v \text{ is very nearly equal to } c \text{ as per above i.e., } v = c$$

$$\Rightarrow M_1^2 (2c v_1 + v_1^2) = M_2^2 (2 c v_2 + v_2^2)$$

Since c is very much greater than v_1 and v_2

$$M_1^2 \cdot 2 c v_1 = M_2^2 \cdot 2 c v_2$$

$$\Rightarrow M_1^2 v_1 = M_2^2 v_2$$

$$\Rightarrow M_1^2 v_1 = M_2^2 v_2$$

$$\Rightarrow \boxed{M_1^2 v_1 = M_2^2 v_2} \Rightarrow \boxed{M_i^2 v_i = \text{constant}}$$

In the case of planets $M_i^2 v_i = \text{constant}$ where M_i is the Mass of the planet and v_i is its rotational speed around the sun.

The energy of a planet due to rotation around the sun is $\frac{1}{2} M_1 v_1^2$

The force is
$$\frac{M_1 v_1^2}{R_1}$$

But, from my theory of Universality a force F is equal to an energy E given by $E = \sqrt{F \cdot ch}$; where h = Planck's constant

$$\text{This implies that } \frac{1}{2} M_1 v_1^2 = \sqrt{\frac{M_1 v_1^2}{R_1} ch} \Rightarrow M_1^2 v_1^4 = \frac{4M_1 v_1^2}{R_1} ch \Rightarrow M_1 = \frac{4ch}{R_1 v_1^2}$$

Substituting in (A) i.e., $M_i^2 v_i = \text{constant}$, we get

$$\frac{16 c^2 h^2}{R_1^2 v_1^4} v_1 = \text{constant} \Rightarrow \frac{16 c^2 h^2}{R_1^2 v_1^3} = \text{constant}$$

But, we know that $v_1 = \frac{2\pi R_1}{T_1}$; where T_1 is the period of rotation around the sun, by the planet.

$$\Rightarrow \frac{16 c^2 h^2 \cdot T_1^3}{R_1^2 \cdot 8\pi^3 R_1^3} = \text{constant} \Rightarrow \boxed{\frac{T_1^3}{R_1^5} = \text{constant}} \text{---} \textcircled{\text{B}}$$

By Kepler's laws of planetary motion:

1. Planets sweep equal areas in equal times . $\frac{\pi R_1^2}{T_1} = \text{constant}$ --- $\textcircled{1}$
2. The square of the periodic time is proportional to the cube of the mean distance of the planets from the Sun.

$$\frac{R_1^3}{T_1^2} = \text{constant} \text{---} \textcircled{2}$$

By equations $\textcircled{1}$ and $\textcircled{2}$; we get

$$\frac{\pi R_1^5}{T_1^3} = \text{Constant} \Rightarrow \frac{R_1^5}{T_1^3} \text{ constant} \Rightarrow \boxed{\frac{T_1^3}{R_1^5} = \text{constant}} \text{---} \textcircled{\text{C}}$$

Now , Both $\textcircled{\text{B}}$ & $\textcircled{\text{C}}$ are the same.

Hence , Kepler's Laws are proved as per theory of Universality. This implies that the assumptions :

1. The planets and sun are traveling at a speed higher than the speed of light.
 2. The starting mass of all celestial bodies is the same;
- are both correct and valid.

I have made a lot of approximations (reasonable approximations) in deriving the above. However, I believe the concept is more important than precision.

THEORY OF UNIVERSALITY

Annexure - I

1. Boltzmann Constant (k) :

As per kinetic theory of matter; the molecules of an ideal gas at temperature (T) have a mean thermal kinetic energy given by $E = (3/2) kT$; in 3-dimensions where k is Boltzmann constant. However, in uni-directional consideration; the same is $E = \frac{1}{2} kT$. The Sun's surface has mostly Hydrogen in atomic state. But, when hydrogen particles collide; they can fuse; the fusion dynamics being altogether different; let us take helium an inert gas; which does not fuse at the Sun's surface as reference. The layer below the Hydrogen layer is mostly Helium. Helium molecule has a mean free path given by

$$r = 6.6317 \times 10^{-8} \times (6000/288) \times (28.986/8)$$

Where. 6.6317×10^{-8} = mean free path of air @ 288⁰K

6000⁰K = Temperature of the Sun's photosphere

288⁰K = ICAO temperature of air.

28.986 = Average molecular weight of air.

8 = molecular weight of Helium (two He monoatomic molecules)

Helium exists as molecules on Sun's surface; $r = 0.5005897 \times 10^{-5}$

Now, suppose the Kinetic energy of Helium molecule is E; The Helium molecule travels in a linear path until collision. By my theory, E is equal to a force F given by $F = E^2 / c h$. So, the Helium molecule travels with this force until collision, which is assumed perfectly elastic.

This implies : $F \cdot r = (E^2 / c h) \cdot r = E \Rightarrow E = h c / r$.

Now, in one directional movement; which the Helium molecule does; till next collision:

$$\left(\frac{1}{2}\right) k T = h c / r \Rightarrow k = (2/T) \cdot (h c / r) = \frac{2}{6000} \cdot \frac{6.626 \times 10^{-34} \times 3 \times 10^8}{0.5005897 \times 10^{-5}}$$

$k = 1.3236389 \times 10^{-23}$; which agrees with experimental value of

$$k = 1.38062 \times 10^{-23}$$

2.Hubble's Constant H_0 :

Hubble's law is $v = H_0 R$.

The Sun as per my theory is traveling at a speed $c + v$; where $v = 2.0993 \times 10^{-7}$; light is the information carrier. With respect to the light (which is used to get information about the speed of separation of stars); the relative speed of separation of Sun is v . This is the speed of separation (v) at the solar corona edge i.e., $21.14 R_s$. (Approx). R_s is the radius of Sun's photosphere. $= 6.96 \times 10^8$ m

Actually $R_{s\text{-corona}} = 21.14 R_s = 147.1344 \times 10^8$ m

Compton wavelength of Sun

$$= 2 \pi \times R_{s\text{-corona}}$$

The speed of Sun $c + v$ is present over its Compton wavelength.

$$\Rightarrow H_0 = \frac{2.0993 \times 10^{-7}}{2 \pi \times 1.471344 \times 10^{10}} = 2.2667 \times 10^{-18} \text{ s}^{-1}$$

agrees with experimental value of

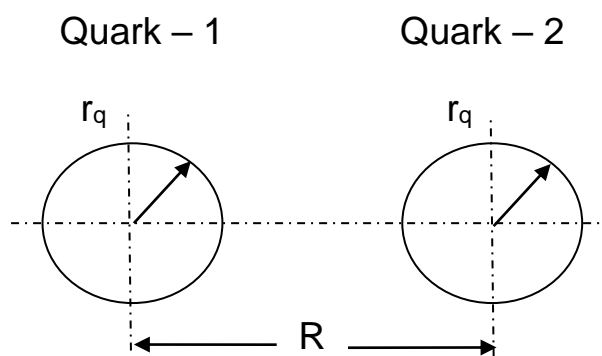
$$\Rightarrow H_0 = 2.5 \times 10^{-18} \text{ s}^{-1} \pm 15\% \text{ found in}$$

the year 2006 A.D.

Note: $R_{s\text{-corona}}$ is the radius of the Sun, till which atmosphere exists. (refer : Annexure – I : Age of Sun since its birth)

3.Strong Nuclear Force:

Suppose, the Confinement radius is R



Each, proton

Comprises of three quarks

Quark mass = $m_p / 3 = m_q$

$r_q = (r_p / 4) \times 1.732$; $r_p = \lambda_p / 2 \pi$; $\lambda_p =$ proton Compton wave length.

$\epsilon_r \cong 1$ for free space.

Then, the force of repulsion between two protons (6 quarks) is matched by the universal force of attraction as :

$$\frac{(6 m_p/3)^2}{h} \frac{c^3}{4 \pi} \frac{\left(\frac{r_p}{4} \times 1.732\right)^3}{R^3} = \frac{e^2}{4 \pi \epsilon_0 \epsilon_r} \frac{1}{R^2}$$

$$R = \frac{36 \times m_p^2 c^3}{9 h} \left(\frac{r_p}{4} \times 1.732\right)^3 \frac{4 \pi \epsilon_0 \epsilon_r}{e^2}$$

$$R = \frac{36 \times 1.672^2 \times 10^{-54} \times 27 \times 10^{24}}{9 \times 6.626 \times 10^{-34}} \frac{\left(\frac{1.3214}{8\pi} \times 1.732\right)^3 \times 10^{-45} \times 4 \pi \times 8.854 \times 10^{-12}}{1.603^2 \times 10^{-38}}$$

$$= 1.4453 \times 10^{-15}$$

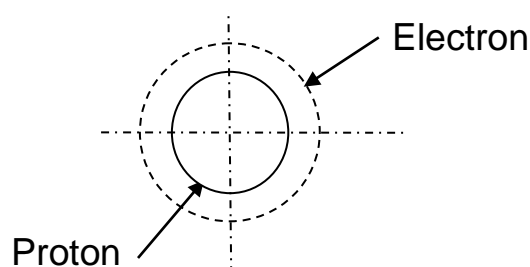
which agrees with experimental result of 10^{-15} m (Approximately).

4. Weak Nuclear Force :

Energy at speeds greater than the speed of light 'c', behaves like anti-matter. Within radioactive neutron the energy trapped within the neutron behaves like anti-matter and splits neutron into proton and electron. The resultant repulsion between matter and antimatter separates proton and electron.

UF around a proton is

$$\frac{m_p^2 c^3}{h}$$



Electrostatic force is

$$\frac{e^2}{4 \pi \epsilon_0 \epsilon_r r^2}$$

Where r is the distance of separation between the two nearly concentric spheres of proton (radius r_p) and electron (radius r_e). Force is inversely proportional to the square of distance r i.e., r^2 . Energy is work done; a product of force and distance (r). Therefore, energy is inversely proportional to the distance r i.e.

$$\frac{e^2}{4 \pi \epsilon_0 r} \cdot \frac{r_p}{r_e} \text{ is the energy in the creation of electron from a neutron}$$

(against the attraction of proton on electron) and r is the distance of the weak nuclear force by which proton and electron separate. This is equal to

$$\text{the repulsion between matter and anti-matter} = \frac{m_p^2 c^3}{h} \cdot r$$

$$\text{Therefore, } \frac{m_p^2 c^3}{h} r = \frac{e^2}{4 \pi \epsilon_0 r} \cdot \frac{r_p}{r_e} ; \epsilon_r = 1$$

$$r = \frac{e^2}{4 \pi \epsilon_0 r} \cdot \frac{h}{m_p^2 c^3} \cdot \frac{r_p}{r_e} ; \frac{r_p}{r_e} = \frac{1.321 \times 10^{-15} \times \frac{1}{2 \pi}}{2.426 \times 10^{-12} \times \frac{1}{2 \pi}}$$

$$r^2 = 1.1023 \times 10^{-36}$$

$$r = 1.0499 \times 10^{-18} \text{ which agrees with the experimental value of } 10^{-18} \text{ m}$$

5. Universal Gas Constant (R) :

Take one mole of Hydrogen @ 273° K. At this temperature Hydrogen is in molecular state. Therefore, mean free path of hydrogen is

$$r_H = \frac{28.966}{1.00792 \times 2} \cdot \frac{6.6317 \times 10^{-8} \times 273}{288.15} = 0.90277 \times 10^{-6} \text{ m}$$

$$V = \frac{4\pi}{3} r_H^3 \cdot N_A = 18.56725 \times 10^5$$

Where N_A is Avogadro constant. A force of $\frac{m^2 c^3}{h}$ is present at the

surface of the object with mass m and this force is present over a Compton wave length of λ and a sphere of radius $(\lambda/2\pi)$. Assume R_0 is the radius of one mole hydrogen sphere; and λ is the Compton wavelength of Hydrogen Molecule.

Force ' F ' present at R_0 is given by :

$$F = \frac{1}{2} \frac{m^2 c^3}{h} \frac{4 \pi R_0^2}{4 \pi r_H^2} \frac{4 \pi \left(\frac{\lambda}{2 \pi}\right)^2}{4 \pi r_H^2}$$

We know that pressure P is Force per unit area.

$$P = \frac{1}{2} \frac{m^2 c^3}{h} \frac{4 \pi R_0^2}{4 \pi r_H^2} \frac{4 \pi \left(\frac{\lambda}{2 \pi}\right)^2}{4 \pi r_H^2} \frac{1}{4 \pi R_0^2}$$

Also, $PV = nRT$

$$\begin{aligned} \Rightarrow R &= \frac{1}{2} \frac{m^2 c^3}{h} \cdot \frac{R_0^2}{r_H^2} \cdot \frac{\lambda^2}{4 \pi^2 r_H^2} \cdot \frac{1}{4 \pi R_0^2} \cdot \frac{V}{nT} \\ &= \frac{1}{2} \cdot \frac{4m_p^2 c^3}{h} \cdot \frac{\lambda_p^2}{4 \pi^2 \cdot r_H^4} \cdot \frac{1}{4 \pi} \cdot \frac{V}{nT} \quad ; n = 1 \\ &= \frac{1}{2} \frac{1.6726^2 \times 10^{-54} \times 27 \times 10^{24}}{6.6262 \times 10^{-34}} \times \frac{1.3214^2 \times 10^{-30}}{\pi^2 \times 0.90277^4 \times 10^{-24}} \times \frac{18.56725 \times 10^5}{4 \pi \times 273 \times 1} \\ &= 8.21179 \text{ which agrees with experimental value of } 8.3143 \end{aligned}$$

6.Free Space Impedance (Z_0) :

A wave of wavelength λ behaves like a spherical object of radius $(\lambda/2\pi)$. e_l is the charge of light when seen as a particle.

$$E = I_p^2 \cdot R_0 t_l = \frac{hc}{\lambda} = \frac{e^2 t_l}{4\pi \cdot \epsilon_0 \frac{\lambda}{2\pi}} \Rightarrow e_l^2 = 2\epsilon_0 \cdot hc \quad \text{--- (1)}$$

But, we know $I_p^2 = \frac{e_l^2}{t_l^2}$; where e_l is the charge of light when seen as a

particle and t_ℓ is the time inertia of light as a wave particle; that is when seen as a charge particle.

Therefore,

$$E = I_p^2 \cdot R_0 t_\ell = \frac{e_\ell^2}{t_\ell^2} \cdot R_0 t_\ell = \frac{e_\ell^2}{t_\ell} \cdot R_0 \quad \text{--- (2)}$$

But as per Planck's hypothesis, light of wavelength λ and time inertia of t_ℓ behaves like an energy packet of energy h/t_ℓ . From ----- 2 , we have

$$\Rightarrow \frac{h}{t_\ell} = \frac{e_\ell^2}{t_\ell} \cdot R_0$$

$$R_0 = \frac{h}{e_\ell^2} = \frac{h}{2\epsilon_0 ch} = \frac{1}{2\epsilon_0 c} \quad \text{from --- (1)}$$

$$R_0 \text{ due to resistance is } R_0 = \frac{1}{2\epsilon_0 c}$$

$$I_0 \text{ due to inductance is } I_0 = \frac{\mu_0 c}{2}$$

$$\text{So, } Z_0 \text{ due to impedance is } = R_0 + I_0 = \frac{1}{2} \left(\frac{1}{\epsilon_0 c} + \mu_0 c \right)$$

$$\text{As per Maxwell's equation } \mu_0 \epsilon_0 = \frac{1}{c^2}$$

$$\Rightarrow Z_0 = \frac{1}{2} \left(\frac{1}{\epsilon_0 c} + \mu_0 c \right) = \frac{1}{2} \cdot \left(\frac{1}{\epsilon_0 c} + \frac{1}{\epsilon_0 c} \right) = \frac{1}{\epsilon_0 c}$$

$$Z_0 = 1/\epsilon_0 c = 376.73021$$

which agrees with experimental value of $Z_0 = 376.7304$

Alternatively, since $\mu_0 \epsilon_0 = (1/c^2)$; $Z_0 = \mu_0 c$.

7.Speed of Rotation of the Sun (ω_s) :

R_s = radius of sun, ω_s = speed of rotation of sun,

v_s = speed of sun in absolute sense, M_u = starting mass of sun

$$R_s \omega_s = v_s; \ell_s = \frac{h}{M_s R_s \omega_s} ; \ell_s = \frac{h}{M_u c} \quad \text{as per my theory}$$

$$\Rightarrow \frac{h}{M_u \cdot c} = \frac{h}{M_s \cdot R_s \cdot \omega_s} \Rightarrow \omega_s = \frac{M_u}{M_s} \cdot \frac{c}{R_s} \quad (1)$$

since momentum is conserved.

We know that M_u for the Sun = 7.441×10^{22}

$$\text{Hence, } \omega_s = \frac{7.441 \times 10^{22} \times 3 \times 10^8}{1.99 \times 10^{30} \times 6.96 \times 10^8} = 1.61172 \times 10^{-8}. \quad (A)$$

Observed rotation is 11 years; actual rotation is 12 years for the sun spots

$$\Rightarrow \omega_s = \frac{2\pi}{T_s} = \frac{2\pi}{12 \times 365 \times 24 \times 3600} = 1.66099 \times 10^{-8}. \quad (B)$$

Now, both (A) and (B) are the same.

Note :

The space - mass vibration within the particle (Sun) released from the central object is 'c', and rotates at the speed of 'c'.

M_u = initial mass of the sun as released from the central object.

8. Newton's Law :

m = rest mass

m_1 = mass at speed v

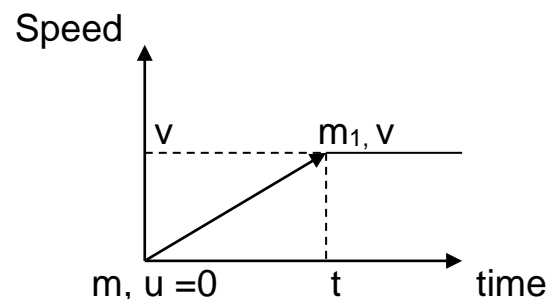
u = initial speed

v = final speed

a = acceleration due to force F .

$u = 0$

$$v^2 = u^2 + 2a \ell \Rightarrow v^2 = 2a \ell$$



We know that as per my theory; $E = \frac{1}{2} m_1 v^2 = \sqrt{Fch}$

$$\frac{1}{2} m_1 v^2 = (m_1/2) 2a \ell = m_1 a \ell$$

$$\Rightarrow \sqrt{Fch} = m_1 a \ell \Rightarrow Fch = m_1^2 a^2 \ell^2$$

But, according to my theory $(hc/\ell^2) = F$. A force F acting over a distance ℓ is equal to a force / energy wave of Compton wave length ℓ .

Hence, $Fch = m_1^2 a^2$. $(hc/F) \Rightarrow F^2 = m_1^2 a^2$

$\Rightarrow F = m_1 a$. Since at lower speeds $m_1 \approx m$.

we have $F = ma$

ℓ , m_1 , v , F are all applicable to force F . A force F is equivalent to a Compton wave length of ' ℓ ' over which it is applicable. ' ℓ ' is here the distance over which the particle reaches speed ' v ' from zero.

9.CBMR – Cosmic Background Microwave Radiation :

Assume CBMR is a radiation given out by the Earth.

m_{10} = rest mass of earth.

ℓ_1 = wave length of the CBMR

v_1 = Speed of the earth around the Sun, which is going at the speed ' $c + v$ ' in absolute sense.

ℓ_i = wavelength of visible light.

m_o = mass of light when treated as a particle.

$$\text{By relativity ; } \ell_1 = \ell_{10} \cdot \sqrt{1 - \frac{(c+v_1)^2}{c^2}} = \sqrt{\frac{2v_1}{c}} \ell_{10}$$

$$t_1 = t_{10} \cdot \frac{1}{\sqrt{1 - \frac{(c+v_1)^2}{c^2}}} = \sqrt{\frac{c}{2v_1}} \cdot t_{10}$$

$$\frac{\ell_1}{t_1} = \frac{2v_1}{c} \frac{\ell_{10}}{t_{10}} = 2v_1; \text{ because } \frac{\ell_{10}}{t_{10}} = c \text{ as per theory}$$

$$Y_1 = \frac{2v_1}{\ell_1} = \frac{2v_1}{\ell_i} \text{ (in the visible light range)} \quad \frac{\ell_{10}}{t_{10}} = c$$

$$\text{and } \frac{\ell_1}{t_1} = \frac{\ell_i}{t_i}$$

$$Y_1 = \frac{2 \times 2.9818 \times 10^4}{404.7 \times 10^{-9}}$$

is the peak frequency for the lowest wavelength of visible light i.e., violet light.

= 147.36 GHz which agrees with experimental result of 160.4 GHz..

Note : c is the speed of light only; not that of microwave radiation nor that of ultra-violet radiation. Actually

$$V_{(IR)} < C$$

$$V_{(UV)} > C$$

10.Age of the Sun (since its birth) :

Assumption : All celestial bodies jet out like a stream of particles from the central Black hole as particles; with the same starting mass and speed. u is the external starting speed . c is the space – mass vibration speed within the particle.

For all celestial bodies $M_i^2 v_i = \text{constant}$.

In the case of Sun $M_v^2 (c+v) = M_u^2 .u$; where $M_u = 7.441 \times 10^{22}$, $M_v = 1.99 \times 10^{30}$

$$u = \left[\frac{1.99 \times 10^{30}}{7.441 \times 10^{22}} \right]^2 . c = 2.1456 \times 10^{23}$$

Time inertia of the primordial particle of Sun w.r.t. the central black hole

Is $t_u = \frac{h}{M_u c^2}$; one cycle time is $2t_u$. λ_u w.r.t. the surroundings space is $\frac{h}{M_u u}$

;the rate of expansion is $v_{exp} = \frac{\lambda_u}{2 t_u} = \frac{c^2}{2 u}$ The sun expands to its

present stage i.e., diameter of the Sun is total upto the edge of the solar corona, in time

$$T_{tot} = \frac{2 \times R_{sCorona} - \lambda_u}{V_{exp}} \quad T_{tot} = \frac{2 \times R_{sCorona} 2u}{c^2}; \text{ since } \lambda_u \approx 0$$

$$= \frac{2 \times 21.14 \times 6.96 \times 10^8 \times 2 \times 2.1456 \times 10^{23}}{9 \times 10^{16}} = 140.31 \times 10^{15}$$

= 4.4491x10⁹ years or 4.4491 billion years.

Which agrees with observed / calculated value of 4.5 billion years.

Note : Cycle time = $2 t_u$ is $t_u + t_u$ i.e., the period of expansion + period of rest. The sun expands in jerks with total period of $2t_u$.

R_{Corona} : Is the radius from the center of the Sun till the edge of the sphere till which Sun's atmosphere is present; and after which the Sun's atmosphere is negligible and ceases to exist.

The primordial particle of Sun slows down to the speed of

$c + v = c + 2.0993 \times 10^{-7}$ to become Sun.

DERIVATION OF $R_{\text{S-CORONA}}$

$R_{\text{geo, corona}} = 4R_E$ (R_E is radius of earth)

$$g_{\text{geo, corona}} = 9.81 \times \frac{R_E^2}{(4R_E)^2} = 0.613125$$

$$\text{Similarly } R_{\text{s, corona}} = \sqrt{\frac{274}{0.613125}} \quad R_s = 21.14 R_E$$

PREDICTION - 2 : The celestial objects jet out like bubbles from the central black hole, at speeds greater than the speed of light ; with VOID inside them; which helps them to float through space. The void does not have space, time, matter and energy and is perfectly empty.

The Geocorona of the Earth is a distance of $4 R_E$ (R_E is the radius of Earth) from the center of the Earth., i.e., $4 R_E$ is the space displaced by the Earth. This is equivalent to a space-mass of

$$\frac{h}{4R_E \cdot c}$$

By Archimedes Principle for floating objects this is the mass destroyed in creating the void for the Earth. Therefore, the Compton wave length of the void

$$= \lambda_v = 2\pi R_v = (h/c) / \left(\frac{h}{4R_E \cdot c} \right) = 4R_E.$$

$$\text{Hence, } R_v = \text{radius of the void inside the Earth} = \frac{4R_E}{2\pi} = \frac{2 \times 6371}{\pi} \\ = 4054 \text{ Km.}$$

This implies that the Earth's solid portion has a thickness of $R_E - R_v = 6371 - 4054 = 2317$ Km only. Except the top layer of crust and hydrosphere most of the solid material of the Earth consists of densest elements like OSMIUM or PLATINUM or IRIDIUM.

THEORY OF UNIVERSALITY**Annexure - II****1. Separation of Earth from Sun :**

The planet Earth is getting separated away from the Sun due to release of energy by the Sun (which in turn releases space which pushes the Earth away from the Sun)

The total force released by the Sun as per my theory is :

$$F = \frac{1}{2} \cdot \frac{R_1^2}{r_1^2} \cdot \frac{m^2 c^3}{h}$$

Energy out pouring : $E = \sqrt{Fch} = \frac{1}{\sqrt{2}} \cdot \frac{R_1}{r_1} \cdot m c^2$

But, as per my theory this energy outpouring away from the sun releases space as given by

$$\ell = \frac{hc}{E} = \sqrt{2} \cdot \frac{r_1}{R_1} \cdot \frac{h}{mc}$$

This is the compton wave length of the space released :-

Therefore, the thickness of the space layer released is :

$$r_s = \frac{\ell}{\pi} = \frac{\sqrt{2}}{\pi} \cdot \frac{r_1}{R_1} \cdot \frac{h}{mc}$$

This increase in the space layer is felt at the solar corona $R_{S\text{-corona}}$ radially. Increase in space linearly along the plane of the Sun – Earth is (at the surface of Sun)

$$r_{SE} = \frac{\sqrt{2}}{\pi} \cdot \frac{r_1}{R_1} \cdot \frac{h}{mc} \cdot \frac{\pi R_1^2}{4\pi R_1^2}$$

Now the space – volume is conserved in the same way as mass- energy is conserved.

Increase in space linearly along the plane of the Sun – Earth @ the surface of Earth

$$r_E = \frac{\sqrt{2}}{4\pi} \cdot \frac{r_1}{R_1} \cdot \frac{h}{mc} \cdot \frac{\pi R_2^2}{4\pi R_2^2} \cdot \frac{4\pi R_{s\text{-corona}}^2}{4\pi R^2}$$

Where $R_{s\text{-corona}} = 21.14 \times R_1 =$ Radius of solar corona

$R =$ Mean distance between the Sun and the Earth. The space is released at the least time period which is that of the time inertia of one

hydrogen atom on the Sun's surface $t_p = \frac{h}{mc^2}$

$$v_E = \frac{r_E}{t_p} = \frac{\sqrt{2}}{16\pi} \cdot \frac{r_1}{R_1} \cdot \frac{R_{s\text{-corona}}^2}{R^2} \cdot c$$

This is the speed of the drift of the planet Earth away from the Sun Substituting the values we get $v_E = 15.3318$ cm / yr which agrees with observed value of 15 cm / yr

$$r = 4.14481 \times 10^{-5}$$

$$R_1 = 6.96 \times 10^8$$

$$R_{s\text{-corona}} = 21.14 \times R_1$$

$$R = 149.597 \times 10^9$$

$$c = 3 \times 10^8$$

2.Absolute Rest mass of Sun (M_0) : $M (1 - (c-v)^2 / 2 c^2) = M_0$

Note : $c-v$ is the matter equivalent speed of the actual anti-matter Sun's speed $c+v$. Sun is anti-matter attracting the anti-matter planets, etc., in the solar system. Simplifying and taking the –ve component, we get $M_0 = M. (-v^2/2c^2)$. Here, we are taking the –ve component; because, Sun comes to absolute rest and starts going back towards the black hole at that point. Since, $v = 2.0993 \times 10^{-7}$, M_0 works out to be = 0.487 kg. (Note : Any object which is faster than light is anti-matter and slower than light is matter).

THEORY OF UNIVERSALITY**Annexure - III****1. Derivation of elementary charge, e:**

Assumptions:

1. Charge energy is caused by rotation of the object; and electric charge energy is equal to the rotational energy.
2. The Earth is a hollow sphere of hollowness equal to a radius of $\frac{2R_{\epsilon}}{\pi}$ where R_{ϵ} is the radius of the Earth from the centre to the surface.

Suppose, the average mean free path of a molecule on the surface of Earth is equal to ' ℓ '; and the average molecular weight is m_{ϵ} . Then, the

number of free nucleons with elementary charge 'e' = $\frac{4\pi R_{\epsilon}^2}{4\pi \ell^2 m_{\epsilon}^2}$; because $m_{\epsilon} \cdot \ell$ is the mean free path of a free nucleon. Now,

let us equate the charge energy on the surface of the Earth and the rotational energy of the Earth. Only, the surface charges contribute to the rotation of the Earth. The charges inside cancel out.

$$\frac{1}{4\pi\epsilon_0} \frac{R_{\epsilon}^4}{m_{\epsilon}^4 \cdot \ell^4} \frac{e^2 \cdot m_{\epsilon}^2}{R_{\epsilon}} = \frac{1}{2} I \omega^2 \quad \text{Where, } I = \text{moment of inertia of sphere} = \frac{2}{5} M R^2$$

$$\text{Whereas, } I_{\epsilon} = \frac{2}{5} M_{\epsilon} R_{\epsilon}^2 \cdot \left[\frac{1 - \frac{2^5}{\pi^5}}{1 - \frac{2^3}{\pi^3}} \right] \quad \text{because Earth is a hollow sphere of } \frac{2R_{\epsilon}}{\pi} \text{ radius}$$

$$= \frac{1}{2} \cdot \frac{2}{5} \cdot \frac{1}{\pi^2} \frac{(\pi^5 - 32)}{(\pi^3 - 8)} M_{\epsilon} R_{\epsilon}^2 \frac{4\pi^2}{T_{\epsilon}^2} \text{ A}$$

Where M_{ϵ} is the mass of Earth and T_{ϵ} is the period of rotation of Earth. Now, we shall derive m_{ϵ} , ℓ and estimate the value of 'e' theoretically. R_{ϵ} , M_{ϵ} , T_{ϵ} are already known.

The Earth's surface consists of crust (with an area of 0.292 fraction of total area) and hydrosphere (with an area of 0.708 fraction of total area). The constituents

of crust are :		fraction		molecular weight			
Oxygen	-	0.4913	X	16	=	7.8608	
Silicon	-	0.26	X	28	=	7.28	
Aluminium	-	0.0745	X	26	=	1.937	
Ferrous	-	0.042	X	52	=	2.184	
Calcium	-	0.0325	X	40	=	1.3	
Sodium	-	0.024	X	22	=	0.528	
Potassium	-	0.235	X	38	=	0.893	
Magnesium	-	0.235	X	24	=	0.564	
Hydrogen	-	0.01	X	1	=	0.01	
Others	-	0.187	X	20	=	0.374	
						m_{ϵ_1} : Total :	22.9308

The average molecular weight of the crust is $m_{\epsilon_1} = 22.9308$ over area $a_1 = 0.292$ of total area.

Similarly, Hydrosphere :

		fraction		molecular weight			
Oxygen	-	0.8589	X	16	=	13.7424	
Hydrogen	-	0.1082	X	1	=	0.1082	
Chlorine	-	0.019	X	34	=	0.646	
Sodium	-	0.0106	X	22	=	0.2332	
Others	-	0.033	X	20	=	0.66	
						m_{ϵ_2} : Total :	15.3898

The average molecular weight (m_{ϵ_2}) of Hydrosphere is 15.3898 over area 0.708 of the total area.

$$m_{\epsilon} = a_1 m_{\epsilon_1} + a_2 . m_{\epsilon_2} = 17.592$$

$$\text{Moreover, } (a_1 \cdot \ell \cdot d_1) / (a_2 \cdot \ell \cdot d_2) = \frac{m_{\epsilon 1}}{m_{\epsilon 2}}$$

$$d_2 = \text{surface water density} = 1025$$

$$d_1 = \frac{22.9308}{15.3898} \times \frac{0.708}{0.292} = 3703$$

$$a \cdot \ell \cdot d = a_1 \cdot \ell \cdot d_1 + a_2 \cdot \ell \cdot d_2$$

$$\text{The average surface density } d = a_1 d_1 + a_2 d_2$$

$$\Rightarrow d = 1806.97 ; \text{ and } \frac{4}{3} \pi \ell^3 = \frac{m_{\epsilon} \times m_p}{d} \quad m_p = \text{proton (or nucleon) mass}$$

$$\text{Now, } \frac{4}{3} \pi \ell^3 = \frac{17.592 \times 1.673 \times 10^{-27}}{1806.97}$$

$$\Rightarrow \ell = 1.5724 \times 10^{-10}$$

From equation (A) :

$$\frac{1}{4\pi\epsilon_0} \frac{R_{\epsilon}^3 e^2}{m_{\epsilon}^2 \ell^4} = \frac{1}{2} \times 0.48263 \times M_{\epsilon} R_{\epsilon}^2 \times \frac{4\pi^2}{T_{\epsilon}^2}$$

$$\Rightarrow e^2 = 8\pi^3 \epsilon_0 \frac{M_{\epsilon} m_{\epsilon}^2}{R_{\epsilon}} \times \frac{\ell^4}{T_{\epsilon}^2} \times 0.48263$$

Substituting the values :

$$\epsilon_0 = 8.85 \times 10^{-12}$$

$$M_{\epsilon} = 5.977 \times 10^{24}$$

$$m_{\epsilon} = 17.592$$

We get

$$R_{\epsilon} = 6.371 \times 10^6$$

$$T_{\epsilon} = 2.393 \times 3.6 \times 10^4$$

$$\ell = 1.5724 \times 10^{-10}$$

$$e^2 = 2.5368603 \times 10^{-38}$$

$$\Rightarrow e = 1.592752 \times 10^{-19} ; \text{ which agrees with the experimental value of } 1.602 \times 10^{-19}$$

The slight discrepancy i.e., 0.925% is due to approximation in m_{ϵ} and ℓ . Hence, the assumptions are correct and valid.

PREDICTION – 3 :

In the Solar System, the ratio of the mass of Sun to the mass of Saturn is nearly same as the ratio of the mass of one neutron plus one proton to the mass of an

electron. We can predict that the Solar System follows Deuterium atomic model with the Sun as the nucleus and Saturn as the electron. Moreover, we can also predict that Saturn is the only planet which has come out of Sun and all other planets of the Solar System are like sub-atomic particles of the Deuterium atomic model.

PREDICTION – 4 :

We have seen in PREDICTION – 1 that the force of Sun on Earth is nearly 20,000 billion times less than the force of Earth on the Sun. We can predict that the Solar System is a whirlpool of space in which all the planets and the Sun are floating and the planets are kept in motion by the space in motion and the Sun happens to be at the centre and the Sun's hold on the planets is feeble; compared to the planets' force on the Sun. Moreover, we can also predict that the planets like Earth can become stars after it slows down to a speed of 'c' from its present speed of $c + v_1$

PREDICTION – 5 :

The central black hole is matter with a highest speed of 'c'; and all the protons in the universe rotate at nearly the speed of light 'c' in the direction of the central black hole; and all the electrons in the universe rotate in the opposite direction at nearly the speed 'c'.

PREDICTION – 6 :

A freely moving sphere in space will have a rotational motion also, if it has a linear motion, and the corresponding relationship between the rotational speed and the linear speed can be derived.

PREDICTION – 7 :

The central body of the universe is rotating in one direction; and all the protons of the universe are rotating at nearly the speed of light 'c' in that direction; electrons in the opposite direction at nearly the speed of light 'c'.

PREDICTION – 8 :

The elementary particles neutron, proton and electron are stable because the universe is vibrating at the speed of light 'c' along with the particles which also vibrate at the speed of light 'c'.

PREDICTION – 9 :

The least speed of any celestial body in absolute sense; outside the central body is 'c'; the highest speed within the central body is 'c'.

PREDICTION – 10 :

The celestial objects jet out like stream of particles from the central body. The central body and the celestial objects rotate in the same direction and the celestial objects go around the central body in the same direction.

PREDICTION – 11 :

Positive and Negative electrical charges are because of rotation of protons and electrons at nearly the speed 'c' in opposite directions.

PREDICTION – 12 :

In reflection, refraction and diffraction of light; light is attracted by the nucleus of protons and neutrons (which behave as matter) and repelled by electrons (which behave as anti-matter); because light behaves like matter particles.

PREDICTION – 13 :

The universe is a finite sphere with space, celestial objects, energy and expanding. It appears to be infinite and every point of the universe appears to be a centre ; because, of multiple reflections of light and energy by the surface (or boundary or edge which is actually expanding) back into the universe.

PREDICTION – 14 :

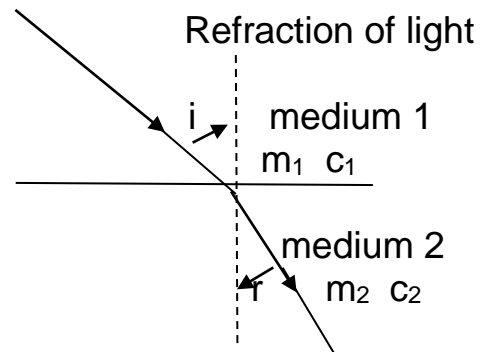
The universe is expanding into void and will fall back into the central black hole; because of all anti-matter getting exploded into matter or space which will then be attracted by the matter in the central black hole.

PREDICTION – 15 :

The plane of the planetary orbits around the sun is inclined in the direction of movement of the solar system in Milky way galaxy and the planets are partly dragging the Sun in its motion around the galaxy; along with space. This is so because; something has to energize the movement of sun against spatial friction. Space in motion also causes partly the movement of the solar system in the galaxy.

2.SNELL's Law :

The coefficient of refractive indices:
 Light behaves as matter waves; and is repelled by electrons in medium which behave as anti-matter; and attracted by neutrons / protons which are matter which causes refraction. Suppose, light has a mass m_1 and m_2 ; and speeds c_1 and c_2 in the two media.
 The horizontal component of the force of light from medium 1 to medium 2 does not change; as there is no force in this direction.



Therefore,

$$\frac{m_1^2 c_1^3}{h} \sin i = \frac{m_2^2 c_2^3}{h} \sin r \text{ as per my theory of universality.}$$

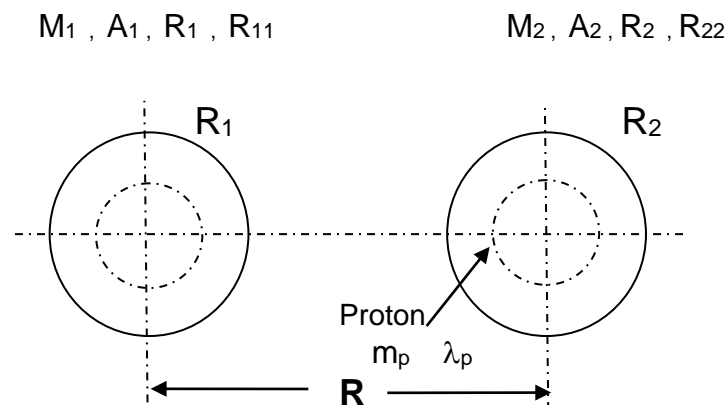
$$\Rightarrow \frac{\sin i}{\sin r} = n = \frac{m_2^2 c_2^3}{m_1^2 c_1^3} = \frac{m_2^2 c_2^4}{m_1^2 c_1^4} \frac{c_1}{c_2}$$

Now energy is conserved $\Rightarrow m_1 c_1^2 = m_2 c_2^2$

$$n = \frac{\sin i}{\sin r} = \frac{c_1}{c_2} = \text{coefficient of refraction}$$

Hence, Snell's law is derived as per theory.

3.GRAVITATIONAL LAW: $F=G \frac{M_1 M_2}{R^2}$



Take two bodies of mass M_1, M_2 ; radii R_1, R_2 ; mean free path of molecules r_1, r_2 molecular weight z_1, z_2 ; and having A_1, A_2 moles of weight. Consider one mole of each with radii R_{11}, R_{22} .

As per my theory, the force due to one mole of M_1 at a distance of

$$R \text{ is: } \frac{1}{2} \frac{4\pi R_{11}^2}{4\pi r_1^2} \frac{z_1 m^2 c^3}{h} \frac{R_{22}^2}{R^2} \text{ on one mole of } M_2$$

The force will act on one proton along the line joining the centers of mass. Hence, the force on one mole of M_2 along the line joining

$$\text{centers of mass is : } \frac{1}{2} \frac{z_1 R_{11}^2}{r_1^2} \frac{m^2 c^3 R_{22}^2}{h R^2} \frac{m_p}{z_2 N_a m} \text{ where}$$

N_a is Avogadro constant and $N_a \cdot m = 1$.

The force due to A_1 moles of M_1 on A_2 moles of M_2 along or parallel to the lines joining the centers of mass on the nearest protons would be;

$$F_{12} = \frac{1}{2} \frac{R_{11}^2}{r_1^2} \frac{z_1 A_1 m^2 c^3}{h} \frac{R_{22}^2}{r_2^2} \frac{r_2^2}{R^2} \frac{A_2 m_p}{z_2 \cdot 1}$$

we know that $r_2 = z_2 \cdot (2 \lambda_p)$ {mean free path of proton = $2 \lambda_p$ }

$$\text{Also, } A_1 z_1 m = \frac{M_1}{N_a} ; \text{ and } A_2 z_2 m = \frac{M_2}{N_a}$$

Therefore ,

$$F_{12} = \frac{1}{2} \frac{R_{11}^2}{r_1^2} \frac{M_1 M_2}{N_a^2} \frac{c^3}{h} \frac{R_{22}^2}{r_2^2 R^2} \frac{z_2 4\lambda_p^2}{z_2} m_p \text{ --- (A)}$$

$$\text{Moreover, for one mole of a body } \frac{z_1 m N_a}{4 \pi R_{11}^3} = \frac{z_1 m}{4 \pi r_1^3}$$

$$\Rightarrow \frac{R_{11}^3}{r_1^3} = N_a \Rightarrow \frac{R_{22}^3}{r_2^3} = N_a \text{ --- (B)}$$

from A and B , we have

$$F_{12} = \frac{1}{2} \cdot \frac{N_a^{2/3} \cdot N_a^{2/3}}{N_a^2} \cdot 4 \cdot \frac{M_1 M_2}{R^2} \frac{c^3 \cdot \lambda_p^2 \cdot m_p}{h}$$

Similarly, the force of M_2 on M_1 will be an equal amount. The total force of gravitation between two bodies of mass M_1 and M_2 along the line joining the centers of mass at a distance R is :

$$F = F_{21} + F_{12} = \frac{4c^3 \cdot \lambda_p^2 \cdot m_p}{N_a^{2/3} \cdot h} \cdot \frac{M_1 M_2}{R^2}$$

Hence, we can conclude that

$G =$

$$\boxed{\frac{4c^3 \cdot \lambda_p^2 \cdot m_p}{N_a^{2/3} \cdot h}}$$

works out to be $G = 6.66889 \times 10^{-11}$ and agrees with experimental

value of $G = 6.67384 \times 10^{-11}$

Hence Newton's law of gravitation for large distances is derived as per my theory of universality

PREDICTION – 16 :

4.The surface speed of a charged fundamental particle : In the case of charged fundamental particles like, proton and electron charge energy is equal to the mass energy as per observation and also equal to the rotational energy.

$$\text{That is } m_0 c^2 = \frac{1}{2} \cdot \frac{2}{5} \cdot m r^2 \cdot \omega^2 = \frac{1}{2} m v^2 \cdot \frac{2}{5} = \frac{1}{5} m v^2$$

where v is the surface speed of the particle of rotation

$$\Rightarrow \frac{1}{5} \frac{m_0}{\sqrt{1 - \frac{v^2}{c^2}}} \cdot v^2 = m_0 c^2$$

$$\Rightarrow v^4 + 25 c^2 v^2 - 25 c^4 = 0$$

$$\Rightarrow v^2 = \frac{(-25 \pm 26.926) c^2}{2}$$

$$\Rightarrow v = 0.98133 \cdot c, \text{ or } \sqrt{-25.963} \cdot c$$

That is to say the charged positive matter particle i.e., proton, moves with a surface speed of rotation $0.98133c$ in the direction of the central black hole which gives it the positive charge; and since, the speed is less than 'c' it is matter particle.

The charged negative anti-matter particle, i.e., electron, moves with a surface speed of rotation of $\sqrt{-25.963} \cdot c$ in the direction opposite that of the central black hole which gives it the negative charge; and since, the speed is more than 'c' it is anti-matter particle.

5.Surface density of central black hole (ρ_{BH}) : Compton wave length of Sun = $2\pi \cdot R_{sc}$ where R_{sc} is the solar corona radius; and Sun is anti-matter The central black hole keeps a matter equivalent mass of every anti-matter particle / object jetting out of it ; whose mass and size keep changing as per the antimatter object which came out. However, the surface density of the central black hole remains constant.

The mass of the matter particle equivalent of this Compton wave length of Sun (on the central black hole) = $\frac{h}{2\pi \cdot R_{sc}}$ and the Compton wave length of the matter particle equivalent of the Sun (on the central black hole) is $\frac{h}{M_s \cdot c}$

Therefore, the surface density of the central black hole is

$$\rho_{BH} = \left[\frac{h}{2\pi \cdot R_{sc} \cdot c} \right] / \frac{4\pi}{3} \left[\frac{h}{2\pi \cdot M_s \cdot c} \right]^3$$

$$\rho_{BH} = 3\pi \cdot \frac{M_s^3 \cdot c^2}{R_{sc} \cdot h^2}$$

Under normal circumstances, the surface density of the central black hole is constant in equilibrium with the universe. Hence, $M_s^3 \propto R_{sc}$.

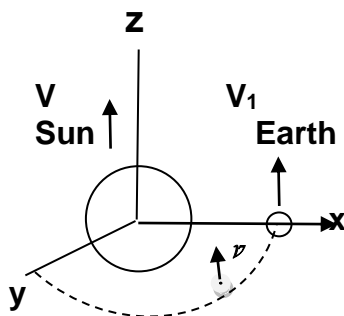
That is, the cube of mass of a star is directly proportional to the star's corona radius.

THEORY OF UNIVERSALITY

Annexure – IV

The absolute speed of Earth (U) :

Suppose, the relative speed of rotation of Earth around sun is V_1 and the relative speed of Earth-plane parallel to the direction of motion of Sun is v . The Sun moves perpendicular to the plane connecting the Sun and the Earth rotary plane; otherwise there will be collision between Sun and Earth .



Suppose the absolute speed of Sun is V .
Now , the transverse relativistic z component of velocity of Earth due to the V_1 speed in x-y frame is

$$V_1 \sqrt{1 - \frac{v^2}{c^2}}$$

The absolute speed of Earth along z- axis is :

$$U = \frac{V + V_1 \sqrt{1 - \frac{v^2}{c^2}}}{1 + \frac{V V_1 \sqrt{1 - \frac{v^2}{c^2}}}{c^2}}$$

Now, we know that $v = 0$; because the plane of rotation of Earth around the Sun and the Sun are at rest : and it is the proper frame. Therefore,

$$U = \frac{V + V_1}{1 + \frac{V V_1}{c^2}}$$

Since V is approximately $= c$ (because the Sun's mass is huge as a star compared to other celestial bodies like planets and this is possible only if V is approximately $= c$)

$$U = \frac{V + V_1}{1 + \frac{V_1}{c}}$$

Now, $V_1 \ll c$. $\Rightarrow U = \frac{V}{c} V_1 + V_1$ as taken in my theory in New Discovery.

DARK ENERGY :

Assumptions :

1. The universe vibrates at the speed of light to keep the fundamental particles stable (as stated in PREDICTION – 8).
2. The space filling the galactic distances is equivalent to dark energy due to this vibration

Proof :

Energy due to this vibration is a lowest value of $E_{\ell} = \frac{hc}{\lambda_{\ell, \max}} = \frac{hc}{\lambda_{\ell, \max}}$
 $= 2.56135 \times 10^{-19} \text{ J (as per my theory)}.$

Where $\lambda_{\ell, \max}$ is the highest visible light wave length. Hence this is the lowest energy density. $\lambda_{\ell, \max} = 775 \text{ nm}.$

The energy due to this energy within pluto's orbit of solar system is

$$E_{de} = \frac{\pi ab.}{\pi (\lambda_{\ell, \max} / 2\pi)^2} \cdot E_{\ell} = \frac{4\pi^2 ab. E_{\ell}}{\lambda_{\ell, \max}} ; \text{ where } a \text{ and } b \text{ are the}$$

aphelion and perihelion of Pluto's orbit

⇒ DARK ENERGY WITHIN PLUTO'S orbit of solar system is at least equal to an amount :

$$= E_{de} = \frac{4\pi^2 \times 7.311 \times 4.437 \times 10^{24}}{7.75^2 \times 10^{-14}} \times 2.56135 \times 10^{-19} = 5.46564 \times 10^{20} \text{ J}$$

This implies := $E_{de} = 6.08136 \text{ TONNES}$; which agrees with the observed value of the total dark energy within Pluto's orbit in solar system equal to 6 Tonnes. Hence, my theory is right., along with the above assumptions.

THEORY OF UNIVERSALITY

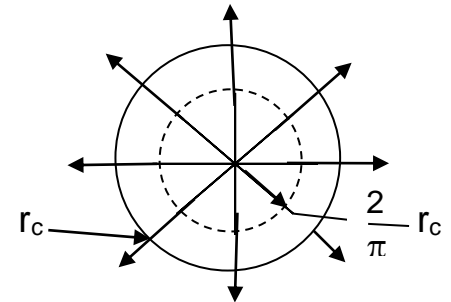
Annexure – V

1. Derivation of Electron / Proton charge :

Electron / Proton is like sun model.

Electron vibrates in 3 dimensions.

- classical radius of electron = r_c
- inertial radius = resonant wavelength
= $2\pi \lambda = 2\pi r_c$



- electron is a hollow sphere of hollowness
radius : $\frac{2}{\pi} r_c$. [Every object in the universe
is a hollow sphere of radius = $\frac{2}{\pi} r_c$]

- gravitational radius of electron = $21.14 \times 2\pi \times r_c$

Hence, we have the following relation by equating charge energy to rotational energy of electron : (Note, it is assumed that charge of electron / proton is due to their rotation)

$$\frac{e^2}{4\pi \epsilon_0 r_c} = \frac{1}{2} \cdot \frac{2}{5} \cdot \frac{(\pi^5 - 32)}{\pi^2 (\pi^3 - 8)} \times m_e \times (2\pi \times 21.14 r_c)^2 \times \left[\frac{4\pi}{h/m_e c^2} \right]^2 = m_e c^2$$

(Note: for the angular speed $\frac{4\pi}{t}$ was taken; because electron as a fireball moves internally in all the 4π radians; only the outer sphere spins 2π radians.

Eliminating r_c ; we get

$$e^2 = \sqrt{\frac{1}{2}} \times \sqrt{\frac{1}{0.48263}} \cdot \frac{\epsilon_0 ch}{\pi (21.14)} \Rightarrow e = 1.6412 \times 10^{-19} \text{ C}$$

Which agrees with experimental value of $e = 1.602 \times 10^{-19} \text{ C}$

Compton wavelength of electron :

If we take $r_c = 2.8179 \times 10^{-15} \text{ m}$; we have

$$\begin{aligned} \text{Compton wavelength} &= 2\pi \times \text{gravitational radius} \\ &= 2\pi \times (21.14 \times 2\pi r_c) = 2\pi (21.14 \times 2\pi \times 2.8179 \times 10^{-15}) \\ &= 2.3536 \times 10^{-12} \text{ m} \end{aligned}$$

Which agrees with observed value $2.42631 \times 10^{-12} \text{ m}$

Note :- An exactly similar deviation can be done for proton.

2. Percentage of Dark energy, Dark matter and ordinary mass in solar system upto Pluto orbit :

- a) D E = Dark energy = spatial vibration energy upto Pluto planet in Solar system = 6.08136 tons as per my theory.
- b) D M = Dark matter (the matter equivalent of the energy outpouring from sun) upto Pluto orbit in solar system = 2.2689 tons. (derived below)
- c) O M = Ordinary mass upto Pluto orbit in solar system = 0.092 tons. (i.e., the rest mass of sun, planets, moons to the planets, asteroids (one planet broken into pieces) = $(1+9+178+1) \times 0.487$ kg) = 189×0.487 kg = 0.092 tons. Note : The absolute rest mass of sun is already derived to be 0.487 kg (in Annexure – II) and the same applies to other celestial objects in the solar system.

Dark Matter : we know as per my theory, the energy released by sun in unit time is :- $\frac{1}{\sqrt{2}} \times \frac{R_1}{r_c} \times \frac{m^2 c^4}{h}$

Dark Matter ; which is the matter equivalent of the energy out pouring upto Pluto orbit would be :

$$\frac{1}{\sqrt{2}} \times \frac{R_1}{r_1} \times \frac{m^2 c^4}{h c^2} \times T_{\text{pluto}}$$

where T_{pluto} is the time for energy to reach Pluto from Sun.

The fraction of Dark matter present upto Pluto orbit as compared to the total dark matter released upto the midpoint between Sun and the nearest star proxima centauri is :

$$\text{Mdm:} \approx \frac{1}{\sqrt{2}} \times \frac{R_1}{r_1} \times \frac{m^2 c^4}{h c^2} \times T_{\text{Pluto}} \times \frac{(T_{\text{pluto}} \times c)^3}{(T_{\text{mpc}} \times c)^3}$$

We know $T_{\text{pluto}} = 19680$ seconds, $T_{\text{mpc}} = 2.12$ years

Substituting, we get $\text{Mdm} = 2.2689$ Tonnes

That is upto Pluto orbit .

D.E. = 6.08136 tons	i.e., 72.03 %
D.M. = 2.26890 tons	i.e., 26.87 %
O.M. = 0.092 tons	i.e., 1.10 %

These percentages agree with observed / predicted Percentages of D. E., D. M, & O M.

Hence, my theory explains the D. E., D. M & O. M.

3. The time sun will last before it explodes into supernova:

As per my theory, the surface density of central black hole is :

$$\rho_{BH} = 3\pi \frac{M_s^3 c^2}{R_{sc} \cdot 4^2} \Rightarrow M_s^3 \propto R_{sc}$$

$$\Rightarrow M_s^3 = k R_{sc}$$

$$\Rightarrow 3M_s^2 \frac{dM_s}{dt} = k \cdot \frac{dR_{sc}}{dt}$$

We know, $\frac{dR_{sc}}{dt} = v_{exp} = \frac{c^2}{2u}$ where u is the speed of the object jetting out of the black hole.

$$\begin{aligned} \Rightarrow \frac{dM_s}{dt} &= \frac{M_s}{3 \cdot R_{sc}} \cdot \frac{dR_{sc}}{dt} \\ &= \frac{1.989 \times 10^{30} \times 9 \times 10^{16}}{3 \times 21.14 \times 6.96 \times 10^8 \times 2 \times 2.1456 \times 10^{23}} \\ &= 9.45 \text{ Billion Tons /s} \end{aligned}$$

Actually, the Sun's mass decrease due to combustion = 4.52 million Tons/s. Therefore, the net increase in Sun's mass is nearly = 9.45 Billion Tons / s.

Chandrasekhar limit of mass for a star = 1.4 M_s before it explodes and becomes supernova.

Applying the above limit , we get

$$\text{time sun will last} = \frac{0.4 \times 1.989 \times 10^{30}}{9.45 \times 10^{12}} = 8.42 \times 10^{16} \text{ s}$$

$$\text{Total time} = 2.67 \text{ Billion years.}$$

Hence, the sun will last 2.67 Billion years from now before it explodes into supernova as per the above calculation.

4. The actual radius of the universe :

Suppose, the universe is finite with a definite boundary and :

- . ρ_{BH} = density of central universal black hole .
- . M_{BH} = Mass of central universal black hole .
- . R_u = Actual radius of the finite universe with boundary.
- . M_u = Mass of the universe other than the central universal BH .
- . ρ_u = density of the universe excluding the central universal BH

Then we have :

$$\frac{\rho_{BH}}{\rho_u} = \frac{M_{BH}}{\frac{4\pi}{3} R_{BH}^3} \times \frac{\frac{4\pi}{3} \left(\frac{h}{cM_u} \right)^3}{\left(\frac{h}{R_u} \right)}$$

Since, the universe other than the BH in **toto** behaves like anti-matter, we have to take matter equivalents.

For the universe to be in balance ; $M_u = M_{BH}$

$$\Rightarrow \frac{\rho_{BH}}{\rho_u} = \frac{1}{M_{BH}^2} \cdot \frac{R_u}{R_{BH}^3} \cdot \frac{h^2}{c^2}$$

$$\Rightarrow \frac{\rho_{BH}^3}{\rho_u} = \frac{9}{16\pi^2} \cdot \frac{R_u}{R_{BH}^9} \cdot \frac{h^2}{c^2} \quad \text{--- (1)}$$

The force of gravitation at the surface of the BH or the universe :

$$\cdot \frac{h}{cR_u} \cdot \frac{GM_{BH}}{R_{BH}^2} = \frac{M_{BH}^2 \cdot c^3}{h} \Rightarrow \frac{h}{c \cdot R_u} \cdot \frac{G}{R_{BH}^2} = \frac{M_{BH} \cdot c^3}{h}$$

$$\Rightarrow \frac{h}{c \cdot R_u} G = \frac{4\pi}{3} R_{BH}^5 \cdot \frac{c^3}{h} \cdot \rho_{BH} \quad \text{--- (2)}$$

Substituting R_u from (1) above into equation (2) ; we get

$$R_{BH}^{14} = \left(\frac{3}{4\pi} \right)^3 \cdot \frac{h^4}{c^6} G \cdot \frac{\rho_u}{\rho_{BH}^4} \quad \text{--- (3)}$$

We know that : $\rho_{BH} = 1.037 \times 10^{165} \text{ kg / m}^3$ $\rho_u = 3 \times 10^{-27} \text{ kg / m}^3$

Substituting in (3) above, we get. $R_{BH} = 9.81 \times 10^{-64} \text{ m}$

$$\Rightarrow R_u \text{ from (1)} = 0.1324 \times 10^{40} \text{ m}$$

$$= 140 \text{ Billion Trillion light years}$$

We can conclude that :

1. The size of the actual universe is nearly 140 Billion Trillion light years radius
2. The size of the central universal black hole is $9.81 \times 10^{-64} \text{ m}$
3. The mass of the central universal black hole is $1.2 \times 10^{-23} \text{ kg}$
4. The density of the central universal black hole is $1.037 \times 10^{165} \text{ kg / m}^3$
5. The density of the universe excluding the black hole at the centre is $3 \times 10^{-27} \text{ kg / m}^3$

THEORY OF UNIVERSALITY**Annexure - VI****1. The reason why electron does not lose energy in a circular orbit inside an atom is as follows :**

When an electron travels in a straight line in vacuum in outer space where there are no fields or forces ; it will come to a stop due to back emf of its self-induction.

However, when electron travels in a circular orbit inside an atom, almost at the speed of light, it comes back to itself almost instantly and the back emf propels it, making up for the loss of speed or energy. Hence, no energy loss.

Proof :

$$\text{Emf} = E = \frac{d\phi}{dt} = LI$$

$$\text{And, } \frac{d\phi}{dt} = \frac{d}{dt}(BA) \Rightarrow \frac{d\phi}{dt} = \frac{\mu_0 I}{2\pi R_e} \cdot \pi R_e^2 = \frac{\mu_0 R_e}{2} \cdot I$$

$$\text{So, } LI = \frac{\mu_0 R_e}{2} \cdot I$$

$$\Rightarrow L = \frac{\mu_0 R_e}{2}, \text{ where, } R_e \text{ is the radius of electron orbit and } I \text{ is electron as current.}$$

The energy stored in electron as inductor energy:

$$= \frac{1}{2} L \cdot I^2 = \frac{1}{2} \left[\frac{\mu_0 R_e}{2} \right] \left[\frac{ev}{2\pi R_e} \right]^2 = \frac{\mu_0}{16\pi^2} \cdot \frac{e^2 v^2}{R_e} \quad \text{--- (A)}$$

The energy dissipated due to back emf

$$= E \cdot e = \frac{\mu_0 \cdot R_e}{4\pi R_e^2} \cdot \frac{e^2 v^2}{2\pi} = \frac{\mu_0}{8\pi^2} \cdot \frac{e^2 v^2}{R_e} \quad \text{--- (B)}$$

$$\begin{aligned} (\text{Note : } E &= \frac{d\phi}{dt} = \frac{d}{dt}(B \cdot A) = \frac{d}{dt} \left[\frac{\mu_0 I}{2\pi R_e} \cdot \pi R_e^2 \right] \\ &= \frac{d}{dt} \left[\frac{\mu_0 \cdot R_e \cdot I}{2} \right] = \frac{\mu_0 \cdot R_e}{2} \cdot \frac{d}{dt} \left[\frac{ev}{2\pi R_e} \right] \\ &= \frac{\mu_0 \cdot R_e}{2} \cdot \frac{e v}{2\pi R_e^2} \frac{dR_e}{dt} = \frac{\mu_0 R_e}{4\pi R_e^2} \cdot \frac{e v^2}{2\pi} \end{aligned}$$

When electron travels a distance . of $2\pi R_e$ in a straight time, There is a net loss of energy given by, $-\frac{1}{2}\mu^2 + E \cdot e = \frac{\mu_0}{16\pi^2} \frac{e^2 v^2}{R_e}$ from equations A and B. Hence, it stops.

However, when electron travels in a circle ,after half circle, the loss in energy $= \frac{1}{2} E \cdot e = \frac{\mu_0}{16\pi^2} \frac{e^2 v^2}{R_e}$, is equal to energy stored in electron inductor.

Since, back emf propels electron, the electron inductor energy supplies equal amount of energy for electron to complete, the other half of circle. Energy loss during one half circle is equal to the energy gained during that half circle due to the energy stored in electron as an inductor, Hence, no energy loss no energy gain.

2. Derivation of g-factor of electron :

Suppose, electron is a hollow sphere of hollow radius. $\frac{2.1435}{\pi} r_c$, where r_c is the classical radius.

In my theory, I have already derived correct values of electronic charge assuming electron to be a hollow sphere of radius of hollowness $\frac{2}{\pi} r_c$ But, the correct hollowness radius is $\frac{2.1435}{\pi} r_c$. So, $\mu = g \frac{-e}{2m_e}$. L = magnetic dipole moment of an electron.

Where, L= angular momentum = I ω . For a sphere of radii r_1 (internal) and r_2 (external),
 $I = \frac{2}{5} M \left[\frac{r_2^5 - r_1^5}{r_2^3 - r_1^3} \right] \Rightarrow g = \left[\frac{\pi^3 - (2.1435)^3}{\pi^5 - (2.1435)^5} \right] (5\pi^2/2) = 2.0023716677$

agrees with the experimental value = 2.00231930436182

3. Negative time : If you take the flow of time from the surface of Central Universal Black Hole (CUBH) away in the universe as positive, then the flow of time into CUBH is negative.

4. Life span of electron :

In my theory, I have already stated that solar system is like a Deuterium model with Saturn as electron and Sun as proton and neutron.

Time inertia of electron at speed "c" = $\frac{h}{m_e \cdot c^2}$

Time inertia of Saturn at speed "v": $\Delta t = \frac{\Delta t_0}{\sqrt{1-v^2/c^2}} = \frac{1}{\sqrt{1-v^2/c^2}} \left[\frac{h}{m_e \cdot c^2} \right]$

$$\text{But... } \frac{1}{\sqrt{1-v^2/c^2}} = \frac{M}{m_e} = \frac{\text{Mass of Saturn}}{\text{Mass of electron}}$$

So, life span of electron, which is one of the quantum pair of entangled elements of proton and electron coming out of neutron, till it becomes Saturn

$$= \frac{M \text{ saturn}}{m_e} \times \frac{h}{m_e c^2} = \frac{5.683 \times 10^{26}}{9.1 \times 10^{-31}} \times \frac{6.626 \times 10^{-34}}{9.1 \times 10^{-31} \times 9 \times 10^{16}}$$

$$0.0505 \times 10^{38} \text{ s} = 1.60134 \times 10^{29} \text{ years.}$$

The electron stays as Saturn for only a few billion years.

Similarly, life span of proton = $\frac{(\text{Mass of sun})/2}{\text{Mass of electron}} \times \text{time inertia of electron}$

$$= \frac{1.989 \times 10^{30}}{2 \times 9.1 \times 10^{-31}} \times \frac{6.626 \times 10^{-34}}{9.1 \times 10^{-31} \times 9 \times 10^{16}} = 2.804 \times 10^{32} \text{ years}$$

The life span of electron = 1.60134×10^{29} years
agrees with the estimated value of at least 6×10^{28} years.

The life span of proton = 2.804×10^{32} years
agrees with the proton decay life span of half-life of about 10^{32} years.

5. Age of the observable universe :

The universe other than the Central Universal Black Hole (CUBH) has an average velocity "c" for all the celestial objects in it.

The time inertia of the particle jetting out of CUBH:

Suppose, a particle of mass m_u and initial speed u comes out of CUBH. It slows down to a speed of "c" the velocity of light and becomes an electron.

$$\text{The time inertia till the particle becomes electron} = \frac{(h/m_u \cdot c^2)}{(h/m_u \cdot u^2)} \cdot \frac{h}{m_e c^2} = \frac{u^2}{c^2} \cdot \frac{h}{m_e c^2}$$

Suppose, the total mass of the universe is M_u and number of stars = 10^{24} . As most of the stars are binary, and also, a star system like solar system is binary, with sun as one star and a planet like Jupiter on the verge of becoming star. Hence, the number of star-like objects = 2×10^{24} .

The primordial particle which jets out of CUBH becomes electron and then a star, and then a matter particle (black hole) and then falls back into CUBH. So, maximum average mass of a star – like object since its journey out of CUBH into star = $\frac{M_u}{2 \times 10^{24}}$, where M_u = mass of the observable universe.

Therefore,

Time span or age of observable universe, T= time of the oldest star

$$T = \frac{M_u}{2 \times 10^{24} \times m_u} \times \frac{u^2}{c^2} \times \frac{h}{m_e c^2}$$

$$\Rightarrow T = 4.4348 \times 10^{17} \text{ s} = 14.05 \text{ Billion years.}$$

agrees with estimated value of T = 13.8 Billion years.

Values used are :

$$M_u = 1.59486 \times 10^{55} \text{ kg}$$

$$m_u = 7.441 \times 10^{22} \text{ kg. (as per my theory)}$$

$$u = 2.1456 \times 10^{23} \text{ m/s (as per my theory)}$$

$$m_e = 9.1 \times 10^{-31} \text{ kg}$$

$$c = 3 \times 10^8 \text{ m/s.}$$

$$h = 6.626 \times 10^{-34} \text{ . J s}^{-1}$$



K.S. Narayana

(KASIBHATLA SURYA NARAYANA)(1959-)

Author : Theory of Universality(1982 -)

The author is a graduate in Electronics from Indian Institute of Technology (1977-82);

and has passed the Civil Services (Main) Exam , 1983.

He learned Physics during his graduate studies in the institute. He has worked in Computer Application Software since 1982, and is presently working for the Content Department of BYJU'S as SME (Subject Matter Expert) – Physics, IBC Knowledge Park, BANGALORE-560029, India.

With an interest in developing a fundamental theory in Physics; which will encompass the existing beliefs; and solve some of the paradoxes already existing since 1960s, he has taken up this Theory of Universality as a project out of personal interest and hobby. He is not basically a physicist by career, however, with whatever knowledge picked up during the graduate studies, and after consulting some periodicals; he went on to develop this theory.

This theory will serve to be the basic foundation for the future development of Modern Physics; and also be the GUT (Grand Unified Theory) in Physics ; unifying the four fundamental quantities space, time, matter and energy; and the four fundamental forces gravitation, electromagnetism, strong and weak nuclear forces.

It is sincerely hoped that this theory will generate interest in the reading public and become useful in further understanding of universe and universality.

K.S. Narayana

VI. ACKNOWLEDGEMENT

1. Prof. R. Chandramani, Professor of Physics, Department of Physics, Dayanand Sagar College of Engineering, Bangalore University, Bangalore, India : for her studious efforts in going through the theory and suggestions.

VII. REFERENCES

- [1]. David Halliday, Robert Resnick, Jearl Walker : Fundamentals of Physics Extended, 8th Edition. (Book)
- [2]. Raymond A. Serway, John W. Jewett : Physics for Scientists and Engineers with Modern Physics. (Book)
- [3]. Raymond A. Serway, Clement J. Moses, Curt A. Moyer : Modern Physics. (Book)
- [4]. B.V. Rama Rao : A Text Book of Modern Physics
- [5]. Orient Longman : © Oliver & Boyd 1971 : Clark's Tables Science Data Book