

## Thermal Study of Combustion Adjusted Chamber of Spark Ignition Engine

Namrata mishra<sup>1</sup>, Manas Kumar Samantaray<sup>2</sup>

<sup>1</sup>(Department of Mechanical Engineering, Gandhi Engineering College, India)

<sup>2</sup>(Department of Mechanical Engineering, Gandhi Institute For Technology, India)

**Abstract:** Efficiency of an interior ignition motor can be expanded by expanding the warmth vitality age inside the burning chamber without affecting the exhibition of lubricating oil and reducing the quality of the cylinder. The principle point of this paper is to decide temperature dispersion in a four-stroke, single-chamber, water cooled, variable pressure proportion (3-9), variable speed (2200-3000 rpm) flash start motor with brake intensity of 2.2 kW at a speed of 3000 rpm with copper covered burning chamber (CCE) [copper-(thickness, 300  $\mu$ ) was covered on cylinder crown, inward side of liner and chamber head] and thought about the motor, with ordinary ignition chamber (CE) with slick fuel activity. Copper covered force cylinder, copp.

**Keywords:** Copper Coating, Piston, Liner, Solid Works, Ansys Workbench, Thermal Analysis.

### I. Introduction

With advent of urbanization, energy consumption is increasing drastically, out of which gasoline energy utilization is foremost as transportation development is fast. Though alcohols are important substitute for gasoline to overcome the fossil fuel crisis, it plays the major contribution for the exhaust pollutants in SI engine due to incomplete combustion of fuel [1]

.Engine modification with copper coating on crown of the piston and inner side of cylinder head improves the engine performance as the copper is a good conductor of heat, stabilizes flame, improves pre-flame reactions and turbulence [2-5]. Temperatures inside the combustion chamber are very high and the heat generated is transferred to different components of power piston, liner and cylinder head such that the need for the study of temperature distribution across the components is a must, especially to provide proper lubrication between liner and power piston and cooling to the walls of combustion temperature [6-10]. Finite Element Analysis is applied in such situations and thereby temperature distribution across the components is determined by using ANSYS programme which employs finite element based software.

### II. Materials And Methods

#### 2.1 Making of copper coated combustion chamber

In the copper coated engine, top surface of the power piston, top surface of auxiliary piston an inside of liner are coated with copper using Twin wire spray gun. For 100 $\mu$  thickness, nickel-cobalt-chromium bond coating was sprayed. On this coating, for another 300 $\mu$  thickness, an alloy of copper (89.5%), aluminium (9.5%) and iron (1%) was coated with a MEC (Trade name of the company) flame spray gun. The bond strength of the coating was so high that it does not wear off even after operating it for 50hrs continuously.

The specifications of the engine are given below

#### ENGINE SPECIFICATIONS

- 1.Type :Four-Stroke, Single Cylinder, Variable Speed, Variable Compression Ratio Petrol Engine (water-cooled)Spark Ignition
- 2.Make :Greaves Limited
- 3.Rated Power :2.2 KW at 3000rpm
- 4.Bore and stroke :70mm x 66.7mm
- 5.Speed :2200rpm-3000rpm
- 6.Compression Ratio:3:1 to 9:1
- 7.Spark Plug:Make: MICOBOSCH
- 8.Spark Plug Gap :0.6mm
- 9.Type Of Ignition:Battery
- 10.Specific fuel consumption:500 gm/h KW
- 11.Lubricating Oil:SAE-40
- 12.Dynamometer :Eddy Current Dynamometer loading Rheostat
- 13.Temperature and Speed:By Digital Indicators

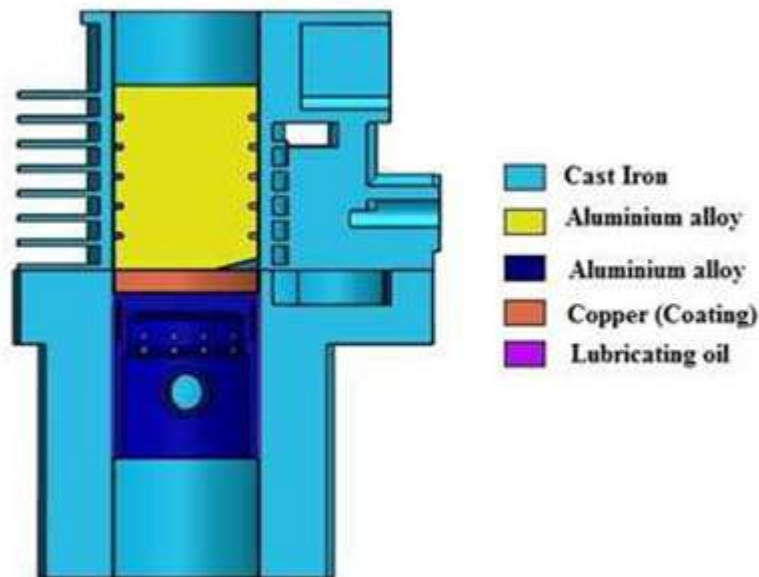
- 14.Starting:Auto Start by DC Motor
- 15.Cylinder Pressure:By Sensor, range :5000PSI
- 16.Exhaust Gas Calorimeter:IND-LAB Make
- 17.Torque arm distance:200mm
- 18.Orifice Diameter:20mm
- 19.Recommended Spark Ignition Timing: 25 bTDC

## 2.2. Measurement of Temperature distribution of engine components

In the present scenario, steady state thermal analysis is done on the assembly of four stroke variable compression spark ignition engine to calculate temperature distribution, heat fluxes, temperature gradients and amount of heat lost or gained in engine components for different versions of the engine. Steady state thermal analysis is done in two main steps. First Geometric Modelling is done then Finite Element analysis is done.

**2.2.1. Solid Model Creation:** In Geometric Modelling, 3-D geometry of power piston, auxiliary piston, liner and cylinder head are created. The models are generated using SOLID WORKS 16. The components are assembled by giving constraints to obtain the final assembly. The assembly is saved as. IGS file. The file is imported to ANSYS workbench15.

Figure 1 shows the Configuration of the assembly with cu coating piston, liner and cylinder head and showing different materials in various zones.



**Figure 1** Configuration of the assembly with cu coating piston, liner and cylinder head showing different materials in various zones

**2.2.2. Meshing the model:** In finite element modelling, mesh was generated with tet10 element type using ANSYS WORKBENCH 15. Since the geometry is complex, free style of meshing is employed. Fine mesh size is considered at small and critical components, while coarse mesh is considered for the remaining components.

Figure-2 Mesh employed in the thermal analysis for the assembly piston, liner and cylinder head with cu coating.

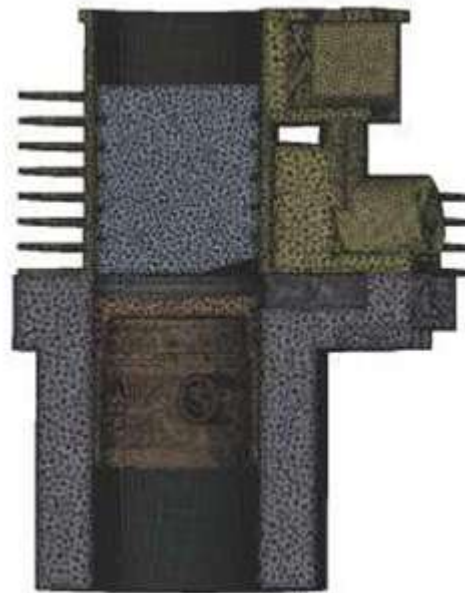


Figure 2 Mesh employed in the thermal analysis for the assembly piston, liner and cylinder head without Cu coating

**2.2.3 Boundary Conditions Application and Thermal Analysis Solution: The boundary conditions for the present problem are obtained from [11]**

The top surface of the power piston is applied with a convective heat transfer ( $h_c$ ) of  $250 \text{ w/m}^2 \text{ k}$  and a bulk temperature ( $T$ ) of  $920^\circ \text{ C}$  and on the water jacket side of the liner,  $h_c= 1800 \text{ w/m}^2 \text{ k}$  and  $T=60^\circ \text{ C}$  and on the cylinder head fins of  $h_c =120 \text{ w/m}^2 \text{ k}$ ,  $T = 60^\circ \text{ C}$ .

Steady state thermal analysis was solved after application of boundary conditions

**III. Results And Discussion**

**3.1 Thermal Analysis Results**

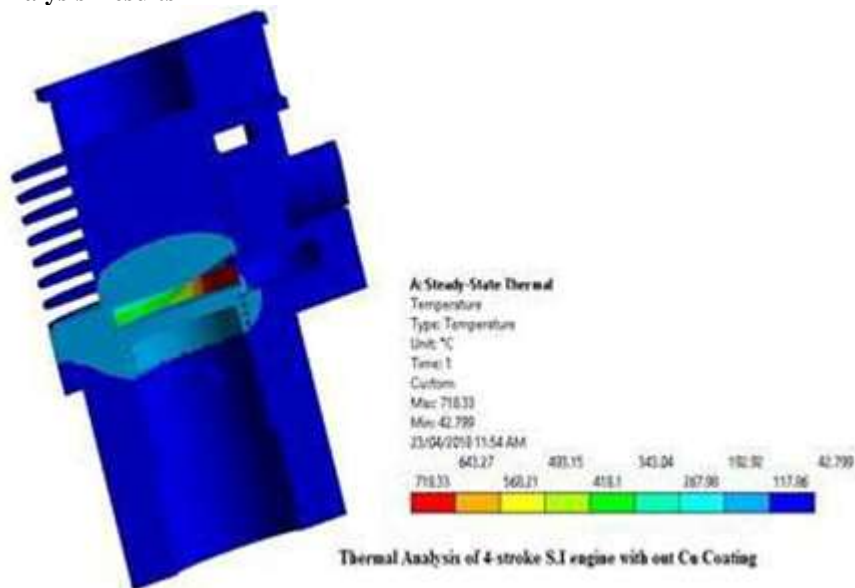
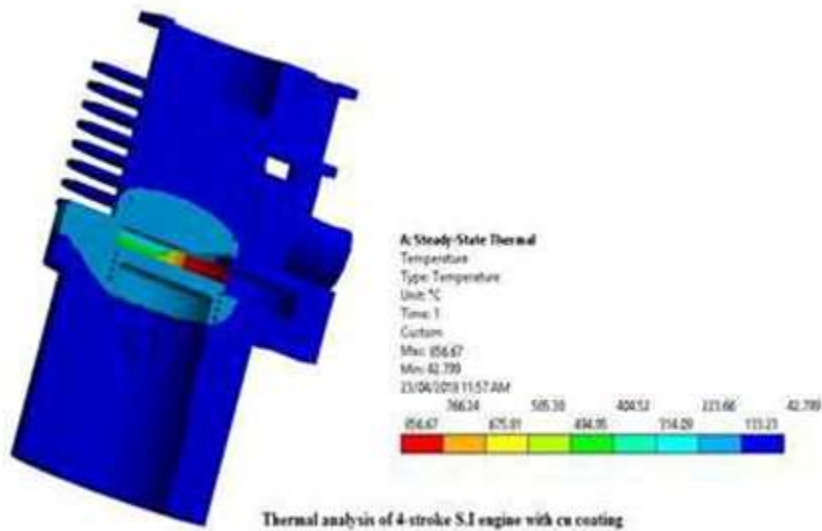


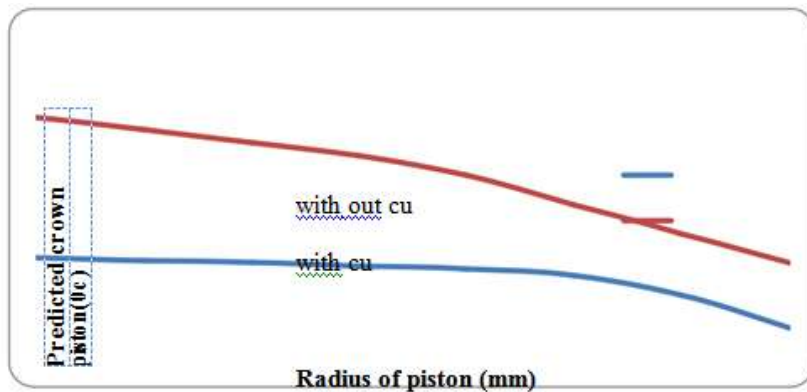
Figure 3 Isotherms of thermal analysis for the assembly of piston, liner and cylinder head of CE



**Figure 4** Isotherms of thermal analysis for the assembly of piston, liner and cylinder head of CCE

**Prediction of the Temperature along the Piston Radius for the Base Engine and Catalytic Coated Engine**

The fluctuation in the crown temperature of the piston predicted by FEM analysis with radius of the piston for CE and CCE was shown in Figure-5



**Figure 5** Variation of the predicted crown temperature with radius of the piston for CE and CCE.

From the Figure 5 it was noticed that, as the radius of piston increases, crown temperature of the piston decreases marginally for both CE and CCE. The temperature decreases at the outer periphery of the piston, as it is cooled by means of lubricating oil and also with the presence of fins. The temperature of the piston of CE is 181<sup>0</sup>C while it is 225<sup>0</sup>C for the piston of CCE at the crown surface. At the outer periphery of the piston, the temperature decreases to 160<sup>0</sup>C for CE and 180<sup>0</sup>C for CCE. The temperature drop for the piston of CCE from the crown to the outer periphery was less as the piston is coated with copper, which has high thermal conductivity and hence thermal resistance was less.

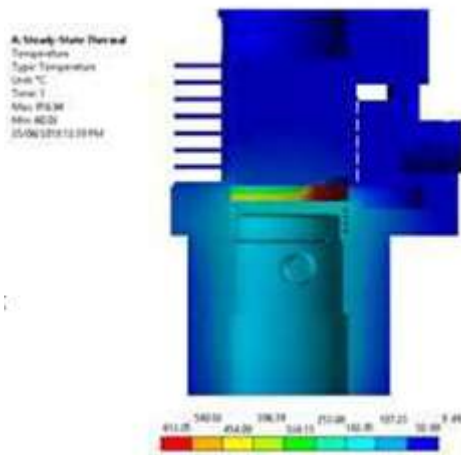


Figure 6 Heat flux in the assembly of piston, liner and cylinder head of CE

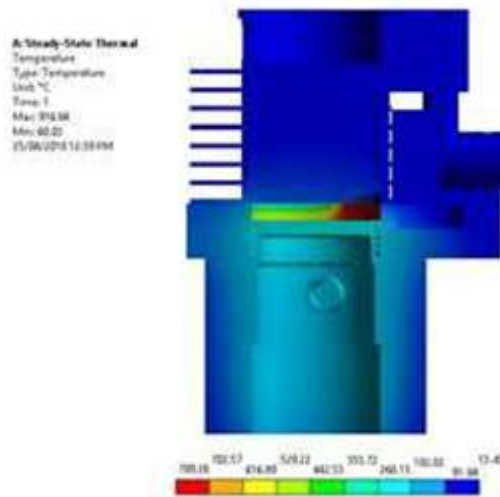


Figure 7 Heat flux in the assembly of piston, liner and cylinder head of CCE

**Prediction of the Heat Flux along the Radius of the Piston in Base Engine and Catalytic Coated Engine**

The variation of the percentage (%) increase in the heat flux in the piston of CCE over that of CE with its radius was shown in the Figure-8.

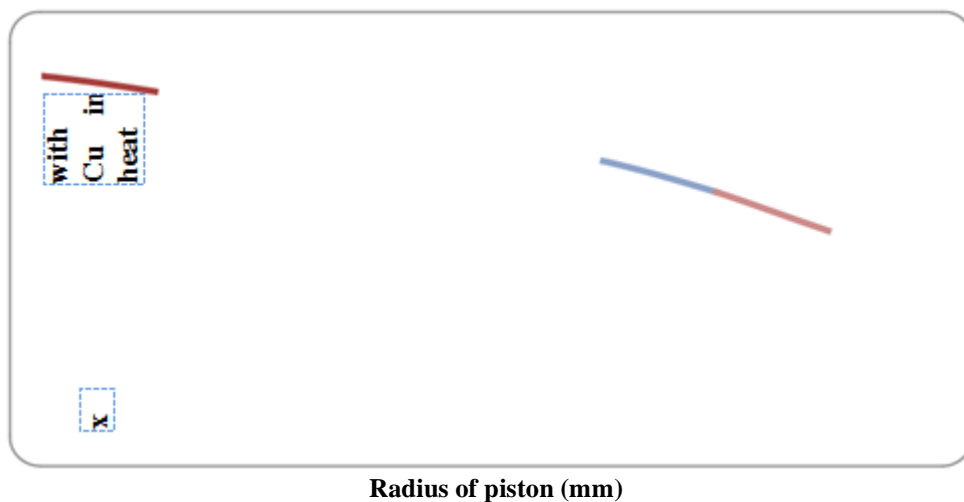


Figure 8 Variation of the % increase in the heat flux with radius of piston in CCE over CE.

As the radius of the piston increase, a marginal decrease in the heat flux( from 19.6 % to 17.6 % ) was noticed in the Figure-8. Since copper coating was done on the piston crown, maximum heat flux was concentrated at the centre of the piston crown. However, at the outer radius of the piston, heat flux was marginally lower, as the outer periphery of the piston is subjected to cooling by means of lubricating oil and fins.

The temperature at the inner side of the liner and cylinder head determined by FEM analysis were compared with the results obtained by experimentation, in order to ascertain the deviation of FEM results from experimental results.

Figure-9,10 shows the isotherms of the lubricating oil between the piston and inner surface of liner of CE and CCE respectively

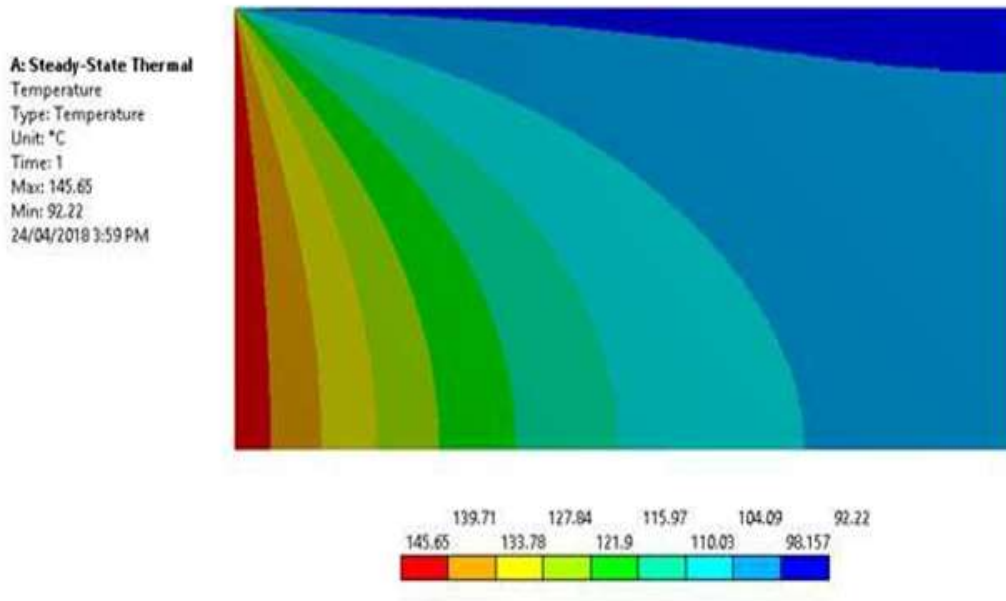


Figure 9 Isotherms from the finite element analysis in the lubricating oil between piston and inner surface of liner for CE

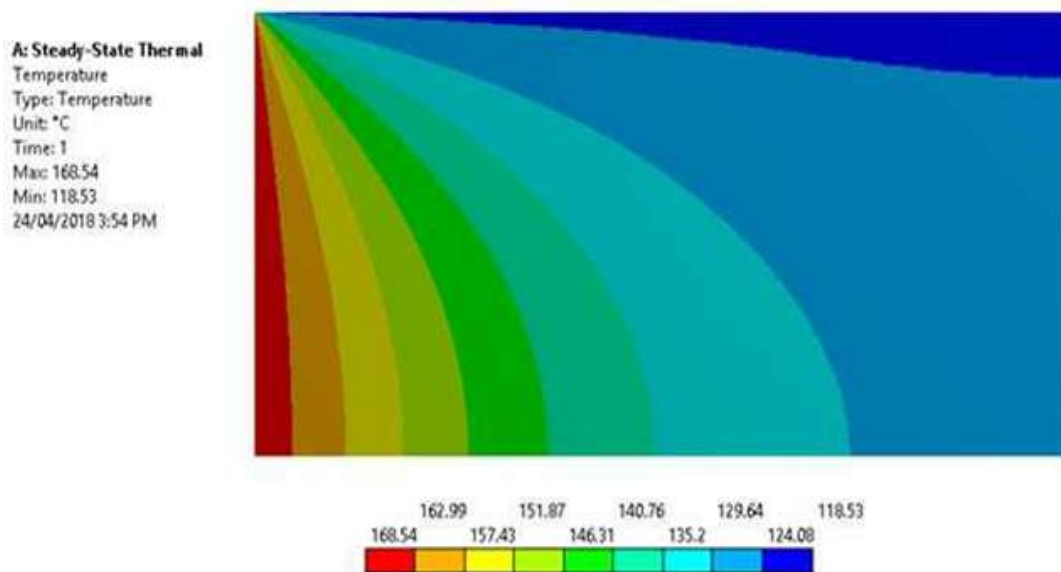


Figure 10 Isotherms from the finite element analysis in the lubricating oil between piston and inner surface of liner for CCE

From the Figures-9,10 the temperatures of the lubricating oil varied from 92<sup>0</sup>C to 145<sup>0</sup>C for CE, while it varied between 118<sup>0</sup>C to 168<sup>0</sup>C for CCE respectively and found that temperatures are at safe limits for which lube oil does not deteriorate. The temperature limit for which lube oil does not deteriorate is 180<sup>0</sup>C [12].

#### **IV. Conclusions**

- Temperature at the top surface of the copper coated piston was 225<sup>0</sup>C which is higher than 181<sup>0</sup>C for the conventional engine.
- Heat flux is increased by 17-19% along the radius of piston for the copper coated engine compared to conventional engine.
- Copper coating on the piston will not deteriorate the lubricating oil temperature as the lube oil temperature was in the safe limits between 118<sup>0</sup>C to 168<sup>0</sup>C, while it varied between 92<sup>0</sup>C to 145<sup>0</sup>C for conventional engine.

#### **References**

- [1] Khopkar, S.M., 2010, "Environmental Pollution Analysis," New Age International (P) Limited, Publishers, New Delhi, pp.180-190.
- [2] Murali Krishna, M.V.S., and Kishor, K., 2008, "Performance Of Copper Coated Spark Ignition Engine With Methanol-Blended Gasoline With Catalytic Converter," *Indian Journal (CSIR) of Scientific and Industrial Research*, 67, July, 543-548.
- [3] Kishor, K., Murali Krishna, M.V.S., Gupta, A.V.S.S.K.S., Narasimha Kumar, S., and Reddy, D.N., 2010, "Emissions From Copper Coated Spark Ignition Engine With Methanol Blended Gasoline With Catalytic Converter," *Indian Journal of Environmental Protection*, 30(3), pp.177-183
- [4] Murali Krishna, M.V.S., Kishor, K., Murthy, P.V.K., Gupta, A.V.S.S.K.S., and Narasimha Kumar, S., 2010, "Performance Evaluation Of Copper Coated Four Stroke Spark Ignition Engine With Gasohol With Catalytic Converter," *International Journal of Engineering Studies*, 2(4), pp.465-473.
- [5] Murthy, P.V.K., Narasimha Kumar, S., Kishor, K., and Murali Krishna, M.V.S., 2011, "Aldehyde Emissions From Two-Stroke And Four-Stroke Spark Ignition Engines With Catalytic Converter Running On Gasohol," *International Journal of Fuels and Lubricants*, 50(2), pp.137-156.
- [6] Murali Krishna, M.V.S., Kishor, K., Murthy, P.V.K., Gupta, A. V. S. K. S., and Narasimha Kumar, S., 2011, "Comparative Studies On Performance Evaluation Of Four Stroke Copper Coated Spark Ignition Engine With Catalytic Converter With Alcohols," *International Journal of Advances in Engineering Research*, 2(6), pp.1-11.
- [7] V.R.Rajagopalan., S.Anand., D.Nagendra Kumar., V.Karunaharan., V.Lakshmi Narsimham., "Investigations of In-Cylinder Heat Flux in a Single Cylinder, 4 Stroke, Air cooled, Spark Ignition Engine for Motor Cycle Application", SAE paper 320804, 2015.
- [8] Thet T.Mon, Rizalman Mamat, Nazri kamsah, "Thermal Analysis of SI-Engine using Simplified Finite Element Method", *Proceedings of the world congress on engineering*, Volume III, WCE-2011.
- [9] Murali Krishna, M.V.S., Kishor, K., Murthy, P.V.K., Gupta, A. V. S. K. S., and Narasimha Kumar, S., 2011, "Comparative Studies On Performance Evaluation Of Four Stroke Copper Coated Spark Ignition Engine With Catalytic Converter With Alcohols," *International Journal of Advances in Engineering Research*, 2(6), pp.1-11
- [10] Muhammet Cerit, Hakan S. Soyhan., "Thermal analysis of a combustion chamber surrounded by deposits in an HCCI engine", *Applied Thermal Engineering*, volume-50, 81-88, 2013
- [11] Kishor, k., "Investigations on Catalytically Activated Two Stroke Spark Ignition engine with alcohol blended gasoline", Ph.D. Thesis, J.N.T. university, Hyderabad, 2014
- [12] Heywood, J.B., "Internal Combustion Engine fundamentals", *Thermo-chemistry of fuel air mixtures, Properties of working fluids*, Mc Graw-Hill Book Company, New York, 1988.