

A Rare Peripheral Nerve Tumour 'Schwannoma' In the Breast: A Case Report.

Shah Naveed¹, Hasinaquari², Dr. Yaser Ahmad³, Dr. Bawaraina⁴, Dr. R.K
Chrungoo⁵, Dr. Ajay Misri⁶

¹MBBS MS Deptt. Of Surgery ASCOMS Jammu J&K INDIA.

²MBBS PGDHHM Deptt. Health Services J&K INDIA.

³MBBS MS Deptt. Of Surgery. Acharya Shri Chander College of Medical Sciences & Hospital. MBBS MD
Assistant Professor. Deptt. Of Pathology.

⁴Acharya Shri Chander College of Medical Sciences & Hospital. Sidhra. Jammu.

⁵MBBS MS FRCS FICS Professor Deptt. Of Surgery. Acharya Shri Chander College of Medical Sciences &
Hospital. Sidhra. Jammu

⁶MBBS MS Surgeon Specialist. Police Hospital. Jammu.

Abstract: Schwannoma arising within breast parenchyma is very rare. This report describes such a case in a 52 year old woman. This tumor which measured 3.5cmx2.5cm was painless mobile, smooth and elastic. At ultrasonography it appeared as a hypoechoic solid mass. Fine needle cytology revealed several clusters of spindle cells indicative of a neoplasm of mesenchymal origin. Histological examination evidenced the characteristic morphological appearance of a schwannoma with Antoni A and Antoni B areas.

Key words: breast, schwannoma.

I. Introduction

A benign tumour of Schwann cells of the peripheral nerve sheath called Schwannoma, also called neurilemoma or neurinoma,^[1] is mostly found in the head, neck, extensor and flexor surfaces of extremities, mediastinum, retroperitoneum and posterior nerve spinal roots^[2,3]. But it is rarely found in the breast or stomach^[4]. They may arise from either parasympathetic or sympathetic nerves of the autonomic nervous system. On perusing the available literature about 27 cases of breast Schwannoma^[5], ranging in size from 0.7cms to 11cms have been confirmed.

Mammographical studies have revealed Schwannomas to be non-specific, well defined, rounded or oval, dense entities. Sonographically more variations have been reported, but the most common one reported is as a solid, hypoechoic, well defined mass with variable posterior acoustic enhancement^[2,6] also seen in the present case.

Fine Needle Aspiration Cytology (FNAC) has been conducted only in a few cases and it has been reported that similar cytological characteristics are seen in some mesenchymal neoplasms with smooth cells and fibromatous features. Microscopically a classic Schwannoma is an encapsulated neoplasm having two components known as Antoni A and Antoni B in variable proportions. Antoni A tissue is cellular and consists of monomorphic spindle shaped Schwann cells with poorly defined Eosinophilic cytoplasm and pointed Basophilic nuclei set in a variable collagenous stroma^[2]. These cells show nuclear palisading and parallel allays of such palisades with intervening Eosinophilic cytoplasmic processes, which are known as Verocaybodies^[7]. Antoni B is hypocellular component^[4].

In the present study a case report of Schwannomas arising in right breast and right upper arm of a 52 year old woman without Von-Recklinghausen's disease is presented.

II. Case Report

A 52 year old female presented with a palpable mass in the right breast and right upper arm. The patient, about a year back, had detected an ill defined mass in her right breast and in the right upper arm, but she did not get it diagnostically evaluated. The masses at two specified different places eventually increased in size during the said year. Physical examination revealed a painless, mobile, smooth and elastic soft mass at both the places. The patient had no previous history of radiation therapy. Axillary lymphadenopathy was not observed. Ultrasonography (USG) of the breast revealed a nodule in the right upper outer quadrant measuring 3.5cms. It was a well defined, vascular, complex, hypoechoic mass within the breast.

FNAC was conducted on both lesions, the smears showed several clusters of oval, elongated and interlacing spindle shaped cells with ill defined cytoplasmic borders (Fig.1). Naked nuclei were found in the background, no ductal epithelium was seen in smears taken from the breast lesion. They were diagnosed as benign spindle cell lesions and surgical excision and subsequent histological examination was recommended.

Surgical excision was done and a well encapsulated mass measuring 3.5 x 2.5cms was excised from the breast. It was creamy white in colour with focal cystic and haemorrhagic areas.(Fig.2).

Microscopic examination on low power confirmed their encapsulated nature with a mixture of two growth patterns (Fig.3), cellular Antoni A and less densely cellular with loose meshwork Antoni B pattern. It was observed that the spindle cells were arranged in a palisading fashion or in an organoid arrangement forming Verocay bodies (Fig.4), interspersed with small areas, where neoplastic cells were scattered in an abundant myxoid background. No atypia and no mitotic figures were observed. The tumour cells showed strong immunoreactivity for S-100 proteins, consistent with the diagnosis of Schwannoma.

III. Discussion

It is known that Schwann cells of peripheral nerve sheath may in certain cases develop into benign tumours, referred to as Schwannomas. Their usual locations of development have been reported to be the head and neck^[2,3]. Other common locations reported are extensor surfaces^[2] and flexor surfaces^[3] of the extremities.

However, in the present study multiple Schwannomas are being reported from two different sites of the same patient one from right female breast which is considered to be the most rare location of Schwannoma^[2,3,5,6,8,9] and another from right upper arm considered usually a common sites. Its uncommon intra mammary location is confirmed from the fact that during the past one year from June 2010- June 2011, in our clinic we have come across a single case of Schwannoma of breast out of 30 breast nodules studied for the different pathological conditions and only one present case of two schwannomas at two different sites of the patient. Earlier only a few cases of such occurrences of multiple Schwannomas have been reported^[10]. Breast Schwannomas have not only been reported from females but in certain cases from elderly men also^[4]. The other rare sites also include the wall of stomach^[4].

They are usually slow growing^[2,3,4] which has also been observed in the present case. In the present case the Schwannoma were painless as is also reported by Yegane *et al.*-(2009) and Geido Bellezza-(2007).

However, Yegane *et al.*-(2009) have also expressed about Schwannomas that, "the most characteristic presentation is a mass lesion with point tenderness and shooting pain on direct palpation".

The age at which Schwannomas usually occur is known to be from thirties^[4] onwards. Most usual age being fifties^[3] and sometimes sixties^[2]. Schwannomas have always been found to be completely separable from the breast parenchyma by being well encapsulated^[3,4,5], which is being confirmed by the present study.

Most of the authors have reported solitary Schwannoma in the breast^[3], same is the case in present study except one more was observed at a different sites. Structural, differentiation into Antoni A and Antoni B regions with S-100 proteins as the diagnostic features of Schwannomas^[3,4,5] were also clearly observed in the present histological examinations.

10 % Schwannomas have been reported to develop at the site of previous radiation therapy even after the delay of twenty years but in the present case the patient had no previous history of getting any radiation therapy.

IV. Conclusion

Breast schwannomas show no definite worrisome mammographic or ultrasonographic features, and an imaging diagnosis is impossible. A diagnosis of schwannoma of the breast may be suggested on a core needle biopsy if there is a cytologically bland spindle cell lesion with areas of palisading, lack of epithelial elements, especially if the cells show immunostaining for S-100 protein [3,4,5]. However, distinction from other spindle cell lesions such as metaplastic carcinomas, a fibroepithelial lesion with minor epithelial components, fibromatosis, myofibroblastoma, among others, will likely require an excisional biopsy.

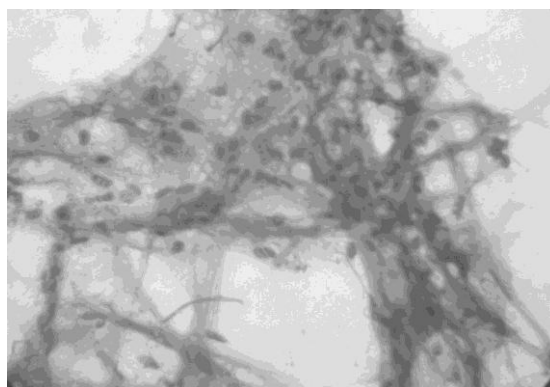


Figure 1 F N A C showing interlacing spindle cells with ill defined cytoplasmic borders.



Figure 2 Grossly, well circumscribed tumor with focal cystic and haemorrhagic areas.

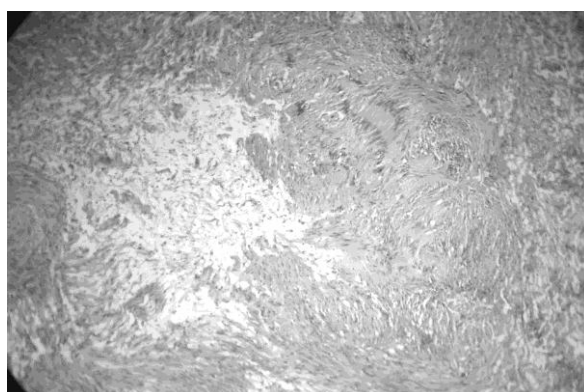


Figure 3 Low power view showing mixture of two growth patterns, "Antoni A and Antoni B"

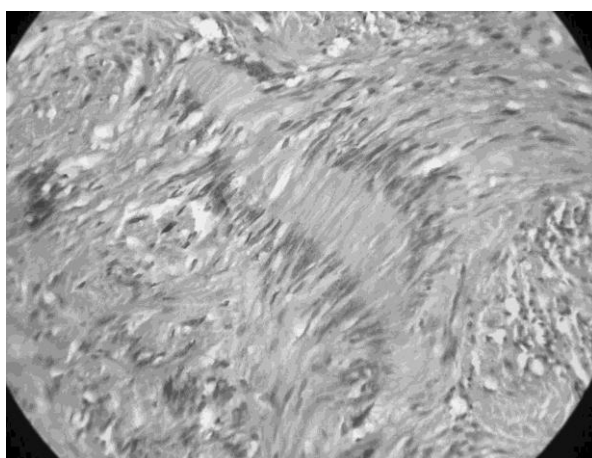


Figure 4 High power view showing organoid arrangement forming 'Verocay bodies'.

References

- [1]. Soft tissue. In: Jaun Rosai (ed). Rosai and Akerman's Surgical Pathology, vol. 2. 9th edn. Mosby, 2004; 2237-2372.
- [2]. Uchida N, Yokoo H, and Kuwano H, Schwannoma of the breast: report of a case. *Surgery Today* 2005; 35 no. 3: 238-242.
- [3]. Bellezza G, Lombardi T, Panzarola P, Sidoni A, Cavaliere A, and Giansanti M, Schwannoma of the breast: a case report and review of literature. *Tumori* 2007; 93 no. 3: 308-311.
- [4]. Yeganeh R, Mousavian SA, Bashashati M, Rare Peripheral Nerve Schwannoma. *IJCP* 2009; 2: 107-110.
- [5]. Dialani V, Hines N, Wang Y et al, Breast Schwannoma: a case report. *Case Reports in Medicine*. vol 2011.
- [6]. Cho KS, Choi HY, Lee SW, and Sung SH, Sonographic findings in solitary schwannoma of the Breast. *Journal of Clinical Ultrasound* 2001; 29 no. 2: 99-101.
- [7]. Fletcher C. *Diagnostic Histopathology of Tumors*, 3rd Edn.; Churchill Livingstone, New York, NY, USA, 2007.
- [8]. Gupta RK, Naran S, Lallu S, and Fauck R, Fine-needle aspiration cytology in neurilemmoma (Schwannoma) of the breast: report of two cases in a man and a woman. *Diagnostic Cytopathology* 2001; 24 no. 1: 76-77.
- [9]. Lee EK, Kook SH, Kwag HJ, Park YL, and Bae WG, Schwannoma of the breast showing massive exophytic growth: a case report. *Breast* 2006; 15 no. 4: 562-566.
- [10]. Shishiba T, Niimura M, Ohtsuka F, Tsuru N. Multiple cutaneous neurilemmomas as a skin manifestation of neurilemmomatosis. *J Am Acad Dermatol*. 1984; 10: 744-54.