

Lorentz Force Based Vibrations Control of Wind Turbine Blades

Aliyu Abubakar¹ Mutari Hajara Ali²

¹*Department of Electrical and Electronics Engineering, Federal Polytechnic, Bali, Nigeria*

²*Department of Physics, Bayero University, Kano, Nigeria*

Abstract

Wind energy has become one of the most important renewable energy sources for meeting the increasing global demand for clean and sustainable electricity generation. However, wind turbine blades are continuously exposed to fluctuating wind speeds, turbulence, aerodynamic loads, and environmental disturbances that induce vibrations. These vibrations can reduce power generation efficiency, accelerate structural fatigue, increase maintenance costs, and shorten the operational lifespan of turbine components. This study investigates the application of a Lorentz force-based electromagnetic damping system for active vibration control in wind turbine blades. Mathematical models of the wind turbine blade and generator dynamics were developed using second-order differential equations and transfer functions, and an optimized Lorentz force electromagnetic controller was integrated to enhance damping performance. The effectiveness of the proposed control strategy was evaluated using MATLAB simulation through transient response, frequency response, and mode shape analyses across six vibration modes, with additional comparative bar-chart assessments to quantify overall performance improvement. Simulation results showed that the optimized controller significantly reduced vibration amplitudes, overshoot, settling time, resonance peak magnitudes, and structural deformation compared with the uncontrolled system. The controlled system exhibited superior damping capability, enhanced resonance suppression, improved modal stability, and better dynamic response under both low- and high-frequency excitation conditions. The findings confirm that Lorentz force-based electromagnetic damping provides an effective, reliable, and robust solution for improving the structural integrity, operational stability, efficiency, and service life of wind turbine blade systems. Future work may focus on experimental validation and real-time implementation for large-scale wind energy applications.

Keywords: *Wind turbine blades, Lorentz force damping, Electromagnetic vibration control, Renewable energy, Vibration suppression*

Date of Submission: 12-06-2026

Date of Acceptance: 23-06-2026

I. Introduction

Renewable energy has become increasingly essential due to the rising global demand for clean and sustainable electricity generation (Panagiotis, 2024). Among renewable energy technologies, wind energy stands out as one of the fastest-growing sources of power, mainly due to its environmental benefits and very low greenhouse gas emissions (Ma et al., 2015). As electricity demand continues to rise, modern wind turbines are being designed larger and more advanced to improve energy production efficiency (Gao et al., 2020).

Despite these advantages, wind turbines still face significant structural and dynamic challenges during operation (Towers, 2021). Wind turbine blades are constantly subjected to aerodynamic loading, turbulence, wind shear, and environmental disturbances (Wang et al., 2025). These forces generate vibrations that can negatively affect the performance, safety, and reliability of the entire system (Chen et al., 2023).

Excessive vibration in wind turbine blades can lead to fatigue damage, resonance instability, structural deformation, increased noise, and reduced power output efficiency (Chong et al., 2021). Over time, these issues may shorten the lifespan of turbine components and increase maintenance costs (Machado & Dutkiewicz, 2024a). Therefore, effective vibration control is essential for improving turbine performance and durability (Kondekar et al., 2024).

¹ Corresponding Author: babandubu@gmail.com

Various vibration control methods have been developed to address these challenges. Passive control methods are simple and cost-effective but lack adaptability under changing operating conditions(Zhu & Li, 2018). Semi-active and active control systems provide better performance; however, they are often more complex and expensive to implement(Fitzgerald et al., 2013).

Recently, Lorentz force electromagnetic damping has gained attention as an advanced vibration control technique(Zhang et al., 2024). It works through the interaction between magnetic fields and conductive materials to produce damping forces that oppose vibration motion(Beskhyroun et al., 2011). This method offers fast response, non-contact operation, reduced mechanical wear, and adaptive vibration suppression capabilities(Machado & Dutkiewicz, 2024b).

This study investigates the application of Lorentz force-based electromagnetic damping for vibration control in wind turbine blades. The main objective is to develop and evaluate an optimized damping controller capable of suppressing blade vibrations, reducing vibration amplitudes, minimizing resonance effects, improving damping characteristics, and enhancing structural stability across multiple vibration modes. The effectiveness of the proposed controller is assessed through transient response, frequency response, and mode shape analyses to determine its impact on the dynamic performance and reliability of wind turbine blade systems.

II. Background Theory

The study modeled the wind turbine blade and generator dynamics using second-order differential equations and transfer functions(Zhang et al., 2024). Lorentz force principles were applied to generate electromagnetic damping forces that oppose vibration motion and reduce oscillation(Fitzgerald et al., 2013). Natural frequency and damping relationships were also analyzed to improve resonance suppression and system stability(Machado & Dutkiewicz, 2024a).

2.1 Wind Turbine Blade Dynamic Equation

The wind turbine blade dynamic equation describes the vibration behavior of the blade system when subjected to aerodynamic excitation forces(Okokpujie et al., 2021). The equation represents the combined effects of blade mass, structural damping, and stiffness during oscillatory motion(Bin et al., 2018). This mathematical model is important for analyzing vibration characteristics and evaluating the effectiveness of the proposed damping controller(Chong et al., 2021). The vibration behavior of the wind turbine blade can be represented using the second-order dynamic equation:

This equation describes the oscillatory motion of the blade system subjected to aerodynamic disturbances.

2.2 Blade Transfer Function

The blade dynamics were modeled by a second-order transfer function in the Laplace domain that characterized the blade's vibrational response to aerodynamic forces (Machado & Dutkiewicz, 2024a). This function incorporated key physical parameters such as inertia, damping, and stiffness to describe how the blade displacement evolved under dynamic wind loading(Huang et al., 2021). The Laplace domain representation of the turbine blade transfer function is given by Equation (2)

where s is the complex frequency, θ is the angular output displacement of the blade

2.3 Generator Dynamics

Generator dynamics were expressed through differential equations and were integrated with the overall system model, ensuring accurate interaction between mechanical and electrical subsystems by incorporating rotational inertia and the electromagnetic domain for damping. The modeled equation representing the generator dynamics is given by Equation (3) (Bin et al., 2018)

where J is moment of inertia of the generator and B damping coefficient, and T_m and T_e are mechanical and electrical torques respectively

2.4 Generator Transfer Function

Generator dynamics were expressed through differential equations and integrated with the overall system model providing the accurate modeling ensures proper interaction between mechanical and electrical subsystems providing the rotational inertia and electromagnetic domain for damping(Okokpujie et al., 2021). The modeled equation representing the generator dynamic is given by Equation (4)

(4)

2.5 Lorentz Force Principle

The Lorentz force is generated when a conductive material carrying electric current interacts with a magnetic field(Chong et al., 2021). The generated Lorentz force acts opposite to the vibration motion and thereby suppresses oscillatory displacement(Ma et al., 2015). The electromagnetic force generated is expressed as:

2.6 Lorentz force Controlled equation

The Lorentz force controlled equation represents the modified vibration model after integrating the electromagnetic damping controller into the wind turbine blade system(Bin et al., 2018). The additional damping and stiffness terms generated by the Lorentz force help suppress oscillatory motion and improve structural stability(Chong et al., 2021). This controlled equation is used to analyze the vibration reduction capability of the proposed electromagnetic damping strategy(Robles-ocampo & Lastres, 2020).

2.7 Natural Frequency

The natural frequency equation defines the frequency at which the wind turbine blade naturally oscillates when disturbed from its equilibrium position(Panagiotis, 2024). The Lorentz force controller modifies the effective stiffness of the system, thereby influencing the natural frequency and reducing resonance effects(Qansh, 2022). This relationship is important for improving vibration suppression and enhancing the dynamic stability of the blade structure(Rahman et al., 2019).The natural frequency of the wind turbine blade system is expressed as:

The Lorentz force controller is designed to minimize resonance effects occurring near the natural frequencies of the blade structure.

III. Materials and Method

The study developed a mathematical model of a wind turbine blade integrated with a Lorentz force electromagnetic damping controller for active vibration suppression. The system utilized electromagnetic actuators, magnetic field units, conductive damping elements, vibration sensors, and MATLAB simulation tools to analyze transient response, frequency response, and mode shape behavior. Key parameters considered included blade mass, stiffness, damping coefficient, magnetic flux density, electromagnetic current, displacement, and velocity, while the performance of controlled and uncontrolled systems was comparatively evaluated.

IV. Results and Discussion

The results from transient response analysis show that the Lorentz force controller significantly reduces vibration amplitudes and improves oscillation decay across all vibration modes. Frequency response results confirm strong resonance suppression and improved stability. Mode shape analysis shows reduced structural deformation and improved modal stability.

4.1 Transient Response Analysis

This section presents the transient response analysis of the wind turbine blade to evaluate the effectiveness of the Lorentz force damping controller in suppressing oscillatory vibrations under different vibration modes. The responses of the uncontrolled baseline system and the optimized controlled system are compared to assess damping performance. Across all figures, the results consistently demonstrate significant vibration suppression, reduced overshoot, faster settling time, and improved system stability, confirming the effectiveness of the proposed controller over a wide range of operating conditions.

Figure 1 and Figure 2 present the transient response comparison for vibration Mode 1 and Mode 2, respectively. These are symmetric low-frequency modes with smooth blade deflection and relatively low contribution to structural fatigue. They were analyzed to assess the effectiveness of the Lorentz force controller in suppressing low-frequency oscillations and improving transient stability.

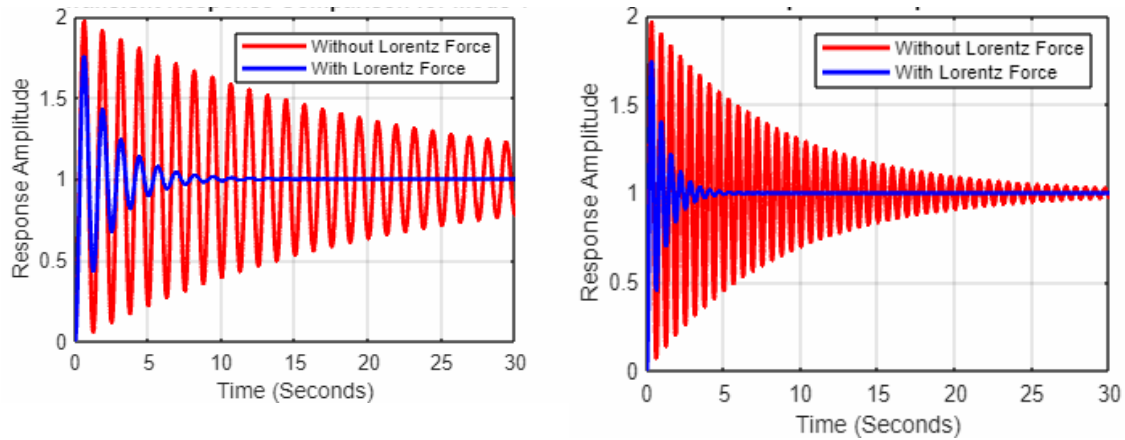


Figure 1: Transient response comparison for symmetric low-frequency Mode 1 **Figure 2:** Transient response comparison for symmetric low-frequency Mode 2

The results in Figure 1 show that the uncontrolled system exhibited large oscillations with slow decay, which may gradually affect efficiency and fatigue life. After applying the Lorentz force controller, vibration amplitude and settling time were significantly reduced, resulting in improved blade stability. Similarly, Figure 2 shows reduced overshoot and faster oscillation decay, confirming effective damping under low-frequency vibration.

Figure 3 and Figure 4 illustrate the transient response comparison for vibration Mode 3 and Mode 4, respectively. These are intermediate distortion modes characterized by increased curvature and localized bending, making them more associated with fatigue and structural degradation. They were analyzed to evaluate the controller under more severe oscillatory conditions.

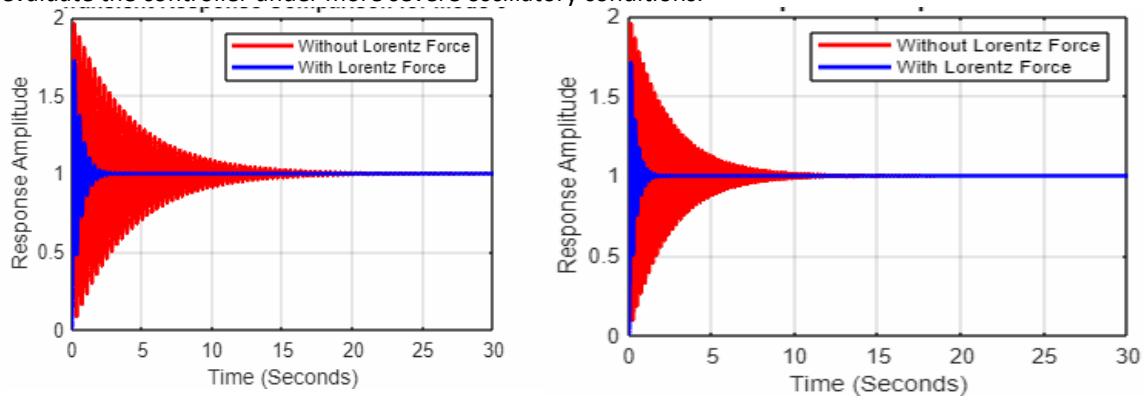


Figure 3: Transient response comparison for distortion Mode 3 **Figure 4:** Transient response comparison for distortion Mode 4

Figure 3 shows increased oscillatory instability in the uncontrolled system, with larger amplitudes and longer vibration duration that could accelerate fatigue damage. The Lorentz force controller effectively suppressed these oscillations and improved stabilization. Figure 4 further confirms smoother decay, reduced overshoot, and stable performance under distortion-dominated vibration.

Figure 5 and Figure 6 present the transient response comparison for vibration Mode 5 and Mode 6, respectively. These are the highest-order distortion modes, characterized by complex deformation and intense stress concentration, making them the most critical for structural failure. They were examined to assess controller performance under extreme vibration conditions

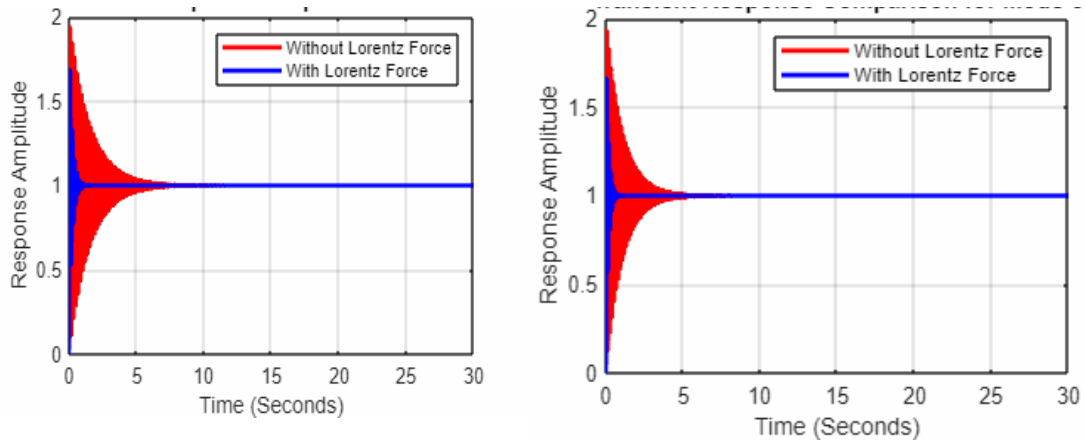


Figure 5: Transient response comparison for high-order distortion Mode 5 **Figure 6:** Transient response comparison for high-order distortion Mode 6

The uncontrolled system in Figure 5 and Figure 6 exhibited severe and persistent oscillations, indicating a high risk of fatigue damage and mechanical failure. After controller implementation, vibration amplitudes were greatly reduced and oscillations decayed rapidly. This confirms that Lorentz force damping remains highly effective even in fatigue-critical high-order modes.

4.2 Frequency Response Analysis

This section presents the frequency response analysis of the wind turbine blade to evaluate the dynamic behavior of the system under varying excitation frequencies and assess the effectiveness of the optimized Lorentz force damping controller. The uncontrolled and controlled systems are compared based on resonance peak amplitude, frequency stability, and vibration attenuation capability. Across all vibration modes, the controlled system demonstrates significant resonance suppression and improved dynamic stability.

Figures 7 and 8 present the frequency response comparisons for Modes 1 and 2, representing lower vibration modes characterized by moderate resonance behavior and relatively lower structural stress. These modes were analyzed to evaluate the controller’s ability to suppress resonance amplification and improve frequency stability.

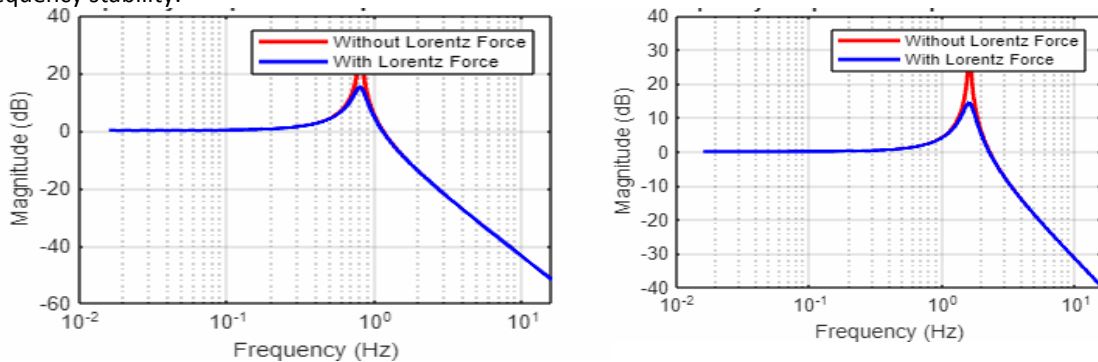


Figure7: Frequency response comparison for mode1 **Figure8:** Frequency response comparison for mode2

The uncontrolled system exhibited pronounced resonance peaks near the natural frequencies, indicating poor damping capability and potential structural instability. The optimized Lorentz force controller significantly reduced resonance peak amplitudes, resulting in improved frequency stability and vibration attenuation. The results confirm effective resonance suppression in the lower vibration modes.

Figures 9 and 10 illustrate the frequency response comparisons for Modes 3 and 4, corresponding to intermediate vibration modes with increased resonance sensitivity and greater instability risk. These modes provide a more demanding evaluation of damping performance.

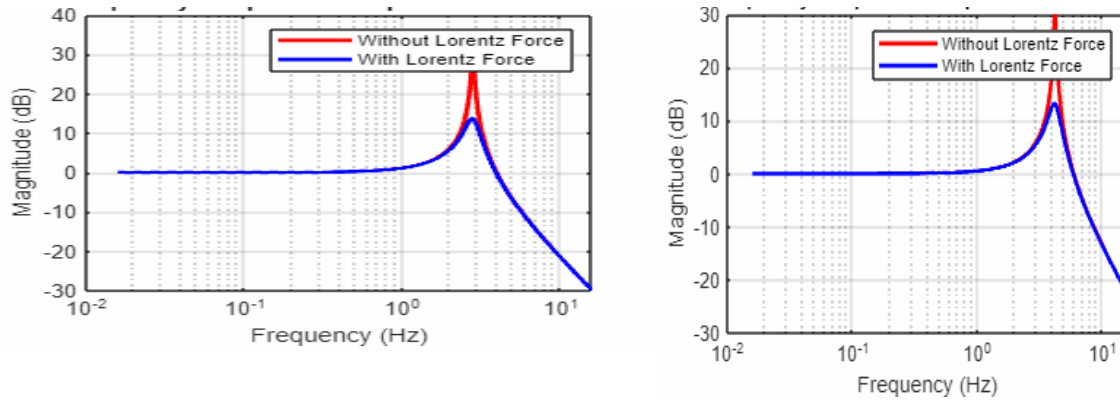


Figure 9 and Figure 10 illustrate the frequency response comparison for Mode 3 and Mode 4 respectively.

These modes showed larger response amplitudes and wider instability regions in the uncontrolled system. The controlled system achieved substantial resonance suppression and enhanced frequency attenuation, demonstrating improved damping performance. The results confirm effective mitigation of resonance effects under intermediate vibration conditions.

Figures 11 and 12 show the frequency response comparisons for Modes 5 and 6, representing higher vibration modes with stronger resonance characteristics and severe structural stress concentration. These modes are the most critical in terms of resonance-induced instability.

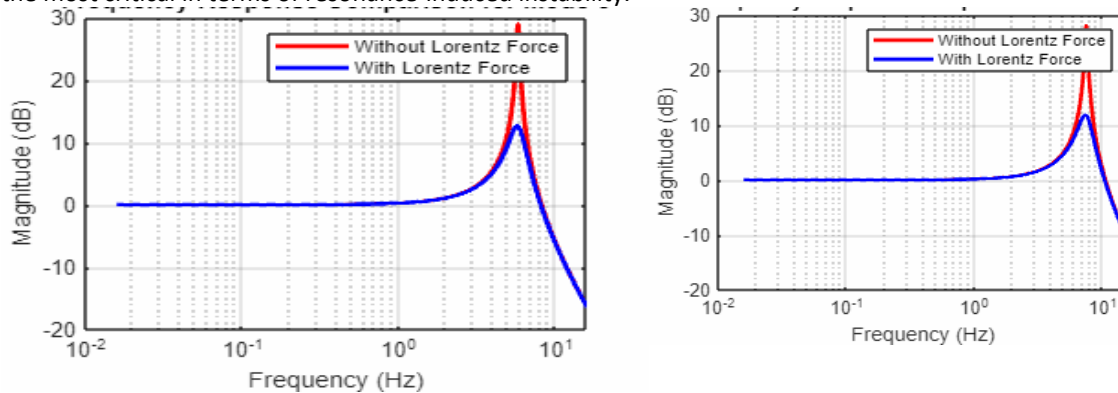


Figure 11 and Figure 12 present the frequency response comparison for Mode 5 and Mode 6 respectively

Figure 11: Frequency response comparison for mode 5 Figure 12: Frequency response comparison for mode 6

These modes produced excessive vibration amplification and increased structural stress in the baseline system. The optimized Lorentz force controller effectively minimized resonance peaks and stabilized system response, confirming its robustness under high-frequency excitation.

4.3 Mode Shape Analysis

This section presents the mode shape analysis of the wind turbine blade to investigate structural deformation characteristics under different vibration modes and evaluate the influence of Lorentz force damping on modal stability. The comparison between uncontrolled and controlled systems highlights the controller’s ability to reduce structural deformation and improve blade stability.

Figures 13 and 14 present the mode shape comparisons for Modes 1 and 2, representing lower vibration modes with relatively smooth structural deformation. These modes were analyzed to evaluate the controller’s effect on modal stability and structural stiffness.

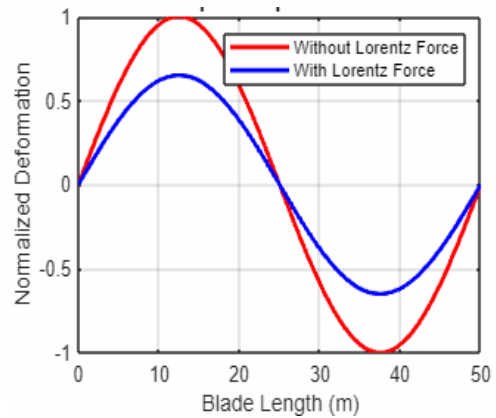
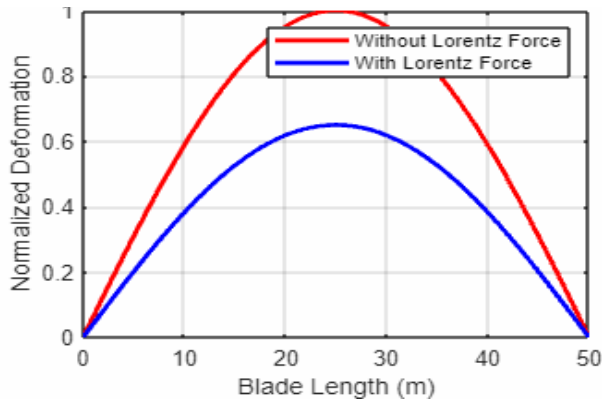


Figure13: mode shape comparison for mode 1 Figure14: mode shape comparison for mode 2

The uncontrolled system exhibited larger deformation amplitudes and unstable structural behavior under external excitation. The optimized controller reduced modal deformation and improved structural stiffness, enhancing stability in the lower modes.

Figures 15 and 16 illustrate the mode shape comparisons for Modes 3 and 4, corresponding to intermediate vibration modes with increased structural complexity and localized deformation. These modes contribute more significantly to structural fatigue.

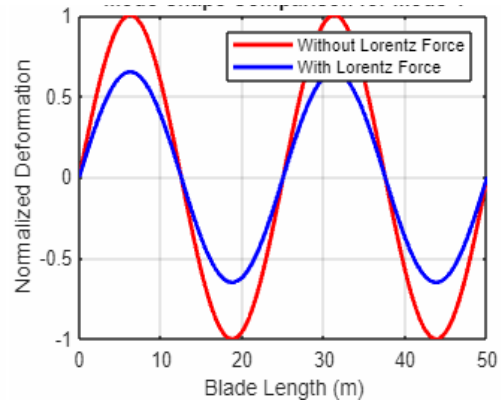
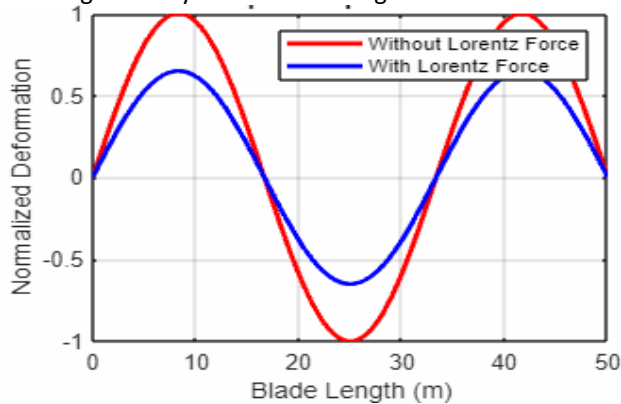


Figure15: mode shape comparison for mode 3 Figure16: mode shape comparison for mode 4

These modes showed greater deformation in the baseline system. The optimized Lorentz force controller significantly reduced modal displacement and improved structural response uniformity, indicating enhanced modal stability.

Figures 17 and 18 show the mode shape comparisons for Modes 5 and 6, representing high-order vibration modes associated with severe structural deformation and high stress concentration. These modes are the most critical in terms of fatigue damage and structural failure.

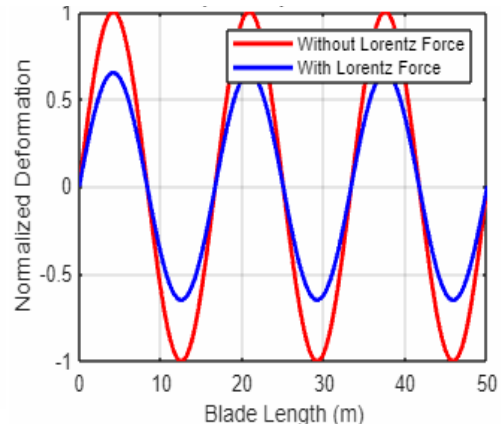
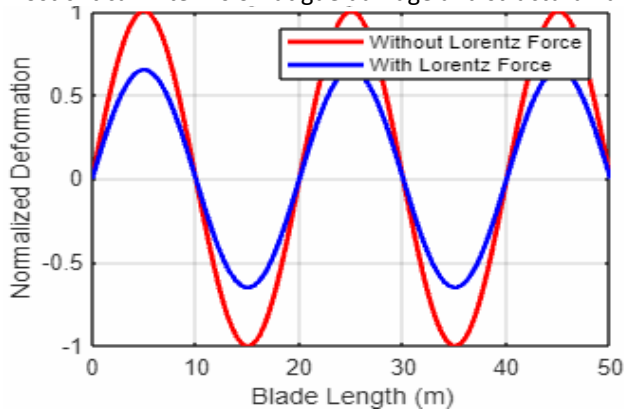


Figure17: mode shape comparison for mode 5 Figure18: mode shape comparison for mode 6

These modes posed the greatest risk of fatigue damage and mechanical failure in the uncontrolled system. The optimized damping system substantially reduced deformation amplitudes and improved overall structural integrity, confirming effective control under critical vibration conditions.

4.4 Transient Response Comparison Bar Chart

This section presents the transient response comparison bar chart to summarize the performance improvement achieved after implementing the optimized Lorentz force damping controller. The chart compares key transient parameters, including vibration amplitude, settling time, overshoot, and damping performance, between the uncontrolled and controlled systems.

Figure 19 presents the transient response comparison bar chart showing the overall improvement in transient performance after controller optimization.

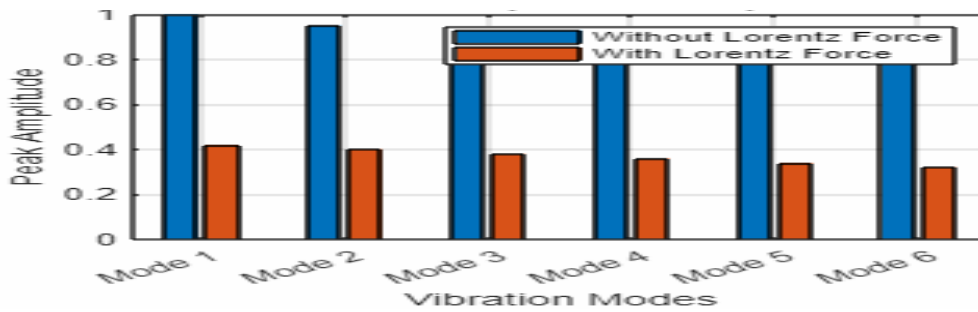


Figure 19: Transient Response Comparison Bar Chart

The results show significant improvement in transient performance after optimization, with lower vibration amplitudes, shorter settling times, reduced overshoot, and enhanced damping characteristics. These findings confirm the effectiveness of the Lorentz force controller in improving transient stability and structural reliability.

IV.5 Frequency Response Bar Chart

This section presents the frequency response comparison bar chart to evaluate the resonance suppression capability of the optimized Lorentz force damping controller. The chart compares resonance peak amplitudes and frequency attenuation characteristics of the uncontrolled and controlled systems across different vibration modes.

Figure 20 presents the frequency response comparison bar chart illustrating the reduction in resonance peak magnitudes and improvement in frequency stability after controller optimization.

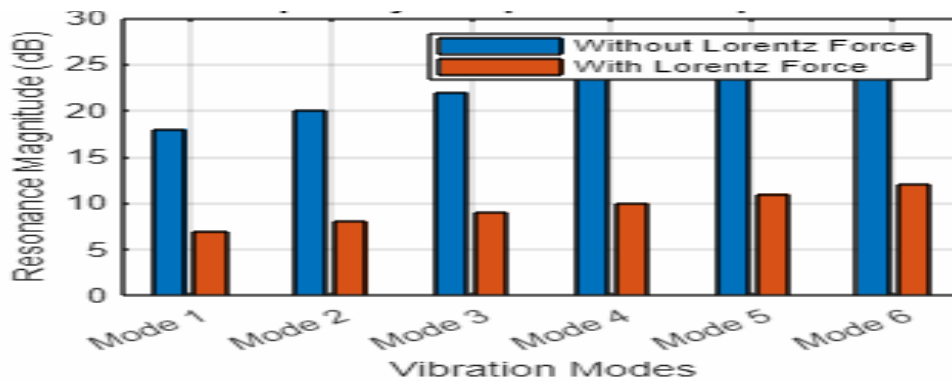


Figure 20: Frequency Response Bar Chart

The optimized controlled system exhibited lower resonance amplitudes and improved frequency attenuation across all vibration modes. These results confirm that the proposed controller effectively suppresses resonance-induced instability and enhances dynamic performance.

4.6 Mode Shape Comparison Bar Chart

This section presents the mode shape comparison bar chart to summarize the structural deformation characteristics of the wind turbine blade across different vibration modes. The chart compares modal

deformation amplitudes of the uncontrolled system with those of the optimized Lorentz force controlled system

Figure 21 presents the mode shape comparison bar chart showing the reduction in modal deformation amplitudes achieved using the optimized damping system.

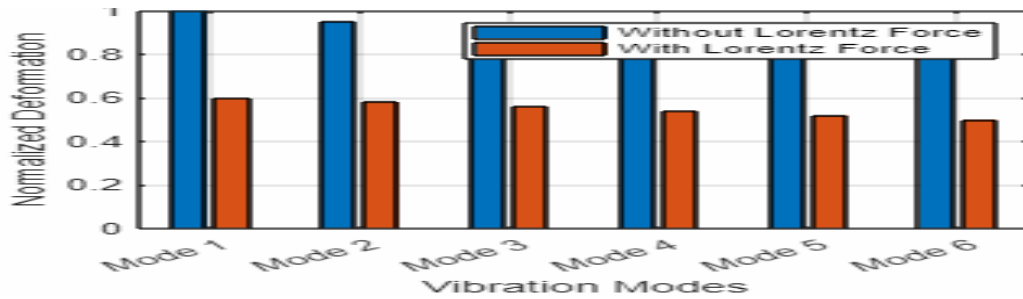


Figure21: Mode Shape Bar Chart

The optimized system demonstrated significant reduction in modal deformation across all vibration modes compared with the baseline system. The improved modal stability confirms the effectiveness of the Lorentz force damping strategy in enhancing structural integrity and extending the operational lifespan of wind turbine blades.

V. Conclusion

This study developed and evaluated a Lorentz force-based electromagnetic damping system for vibration control in wind turbine blades. The proposed controller successfully reduced oscillations, suppressed resonance, improved damping performance, and enhanced structural stability across multiple vibration modes. The transient response, frequency response, and mode shape analyses consistently demonstrated significant improvements in vibration suppression and system stability compared with the uncontrolled system. These findings confirm that Lorentz force-based vibration control is an effective approach for improving the reliability, durability, and operational lifespan of wind turbine blade systems. Future work may focus on experimental validation, real-time implementation, and integration with adaptive intelligent control strategies for large-scale wind energy applications.

References

- [1]. Beskhyroun, S., Wegner, L. D., & Sparling, B. F. (2011). Integral resonant control scheme for cancelling human-induced vibrations in light-weight pedestrian structures. *Structural Control and Health Monitoring*, May 2011, n/a-n/a. <https://doi.org/10.1002/stc>
- [2]. Bin, G., Li, X., Shen, Y., & Wang, W. (2018). Development of whole-machine high speed balance approach for turbomachinery shaft system with N+1 supports. *Measurement: Journal of the International Measurement Confederation*, 122(May 2016), 368–379. <https://doi.org/10.1016/j.measurement.2018.02.035>
- [3]. Chen, Y. H., Yue, Y. F., Zhang, Y., Li, R. P., & Xu, X. (2023). Numerical Investigation of Vibration Suppression for the Combined Device of Non-Newtonian Fluids Coupled Elastic Baffle. 16(3), 591–602.
- [4]. Chong, C. H., Rigit, A. R. H., & Ali, I. (2021). Wind turbine modelling and simulation using Matlab / SIMULINK. *IOP Conference Series: Materials Science and Engineering*, 1101(1), 012034. <https://doi.org/10.1088/1757-899x/1101/1/012034>
- [5]. Fitzgerald, B., Basu, B., & Nielsen, S. R. K. (2013). Active tuned mass dampers for control of in-plane vibrations of wind turbine blades. *January*, 1377–1396. <https://doi.org/10.1002/stc>
- [6]. Gao, L., Yang, S., Abraham, A., & Hong, J. (2020). Effects of inflow turbulence on structural response of wind turbine blades. *Journal of Wind Engineering and Industrial Aerodynamics*, 199(September 2021). <https://doi.org/10.1016/j.jweia.2020.104137>
- [7]. Huang, Z., Tan, J., & Lu, X. (2021). Phase difference and stability of a shaft mounted a dry friction damper: Effects of viscous internal damping and gyroscopic moment. *Advances in Mechanical Engineering*, 13(3), 1–17. <https://doi.org/10.1177/1687814021996919>
- [8]. Kondekar, A. S., Swami, N. S., Naik, S. A., Vhanmane, A. N., Design, M., Engineering, M., Patil, A. D. Y., Patil, Y. B., Tech, M., Tech, M., Design, M., Engineering, M., At, L., Pratishtan, D. Y. P., & Patil, Y. B. (2024). *BLADELESS WIND TURBINE*. 06, 1862–1869.
- [9]. Ma, H., Zhao, Q., Zhao, X., Han, Q., & Wen, B. (2015). Dynamic characteristics analysis of a rotor-stator system under different rubbing forms. *Applied Mathematical Modelling*, 39(8), 2392–2408. <https://doi.org/10.1016/j.apm.2014.11.009>
- [10]. Machado, M. R., & Dutkiewicz, M. (2024a). Wind turbine vibration management: An integrated analysis of existing solutions, products, and Open-source developments. *Energy Reports*, 11(February), 3756–3791. <https://doi.org/10.1016/j.egy.2024.03.014>
- [11]. Machado, M. R., & Dutkiewicz, M. (2024b). Wind turbine vibration management: An integrated analysis of existing solutions, products, and Open-source developments. *Energy Reports*, 11(December 2023), 3756–3791. <https://doi.org/10.1016/j.egy.2024.03.014>
- [12]. Okokpujie, I. P., Akinlabi, E. T., Udoye, N. E., & Okokpujie, K. (2021). Comprehensive Review of the Effects of Vibrations on

- Wind Turbine During Energy Generation Operation, Its Structural Challenges and Way Forward. *Lecture Notes in Mechanical Engineering*, January, 935–948. https://doi.org/10.1007/978-981-15-4488-0_79
- [13]. Panagiotis, C. J. (2024). *Vibrations and Damping Mechanisms in Wind Turbines : Challenges and Advances in Material Design and Control Systems*. 11(11), 1–19. <https://doi.org/10.17148/IARJSET.2024.111101>
- [14]. Qansh, H. (2022). *Department of Mechanical Engineering PhD Mechanical Engineering PhD Thesis Aerodynamic Analysis on Modified. March*.
- [15]. Rahman, M., Ong, Z. C., Chong, W. T., & Julai, S. (2019). *Smart Semi-active PID-ACO control strategy for tower vibration reduction in Wind Turbines with MR damper Abstract : 18(4)*, 887–902.
- [16]. Robles-ocampo, J. B., & Lastres, O. (2020). *Dynamic Instability of a Wind Turbine Blade Due to Large Deflections : An Dynamic Instability of a Wind Turbine Blade Due to Large Deflections : An Experimental Validation*. September. <https://doi.org/10.5545/sv-jme.2020.6678>
- [17]. Towers, W. T. (2021). *Design of an Active Damping System for Vibration Control of Wind Turbine Towers*.
- [18]. Wang, Z., Gao, R., & Wang, L. (2025). *Analysis on Wind-Induced Fatigue Life of Steel Tall Buildings Based on Wind Tunnel Test and Time-Domain Analysis*. 1–18.
- [19]. Zhang, Z., Li, X., Larsen, T. G., Sun, T., & Yang, Q. (2024). Pole-Placement-Based Calibration of an Electromagnetically Realizable Inerter-Based Vibration Absorber (IDVA) for Rotating Wind Turbine Blades. *Structural Control and Health Monitoring*, 2024. <https://doi.org/10.1155/2024/7255774>
- [20]. Zhu, C., & Li, Y. (2018). Reliability Analysis of Wind Turbines. *Stability Control and Reliable Performance of Wind Turbines*. <https://doi.org/10.5772/intechopen.74859>