

Study of the Behavior Pattern, Carbon Reduction Effect and Business Costs of Electric Motorcycles on Island

Shyang-Chyuan Fang

Department of Tourism and Leisure, National Penghu University of Science and Technology.

Corresponding Author : Shyang-Chyuan Fang

Abstract: *Global warming and climate change have led to extreme changes in climatic conditions in recent years. The Taiwan government designates the construction of the Kinmen County as low carbon islands, to promote the operation of 100 electric motorcycles and battery demonstration. This study combined with island tourism, after boarding the island, visitors can rent electric motorcycles from the passenger service center and coordinate with the island tour map to show the location of the battery exchange points, so as to facilitate the search. During the operation, the amount of electric motorcycle lease is 15,551 times, the total mileage of motor vehicle is 284,404 km, the number of battery exchange is 622 times, the lease income is about NT\$900,000. To reduce carbon and economic benefits of the assessment, compared to the motorcycles (50 c.c), electric motorcycles (EM 100) can reduce the carbon emissions by 8,726 kg, reducing energy costs of NT\$422,594.*

Keywords: *low carbon island; electric motorcycles; green transport; battery exchange; carbon emissions*

Date of Submission: 05-04-2019

Date of acceptance: 20-04-2019

I. Introduction

Global warming and climate change have led to extreme changes in climatic conditions in recent years. In addition, as a result of the rapid increase in human activities, fossil fuels are rapidly depleted. As a result, carbon reduction has become a daunting challenge for the 21st century. Many countries have actively implemented measures to combat local greenhouse gas emissions (Acquaye, and Duffy, 2010, Chang, Ries, and Wang, 2010). Fifth Assessment Report (AR5) of the Intergovernmental Panel on Climate Change (IPCC) stressed that unless mitigation actions were implemented, the global average surface temperature would rise by 3.7–4.8°C in 2100. Therefore, actively promoting green policies, creating employment opportunities for sustainable investment, implementing environmental and ecological sustainability, and building a Low-carbon society with a low-carbon economy should be a key issue for countries around the world. As a result, many countries around the world have taken action to calculate their greenhouse gas (GHG) emissions using specific technologies (Peters, 2008), which has been translated into concrete action.

Many urban residents, especially in Asia, have adopted motorcycles as the main vehicle for urban transport. Relatively high but dispersed population and work density, narrow streets and a uniform distribution of road networks make motorcycling a convenient choice for many urban point-to-point trips. Low-cost Chinese motorcycles, credit and cheap fuel also make it an affordable option. Motorcycles can not only use space effectively because of their size and maneuverability (Yeung et al., 2015, Fan, 1990, Adnan, 2014), but their efficiency may increase the proportion of traffic including motorcycles (Rongviriyapanich and Suppatrakul, 2005). According to statistics published by the Taiwan Environmental Protection Agency, the number of carbon monoxide, hydrocarbons and particulate matter produced by traditional motorcycles accounted for 27%, 48% and 23% of the total amount generated by all road vehicles. Motorcycles have become the main source of air pollution in Taiwan. In order to achieve the objectives of the Convention on Sustainable Energy policy, the Government has implemented carbon emission controls in the transport sector, and has developed allowable energy performance standards and air pollution emission standards for motorcycles (Huang, Kuo and Chou, 2018). In addition, the Government has introduced a number of measures to promote electric motorcycles. These include exemption from the consumption tax and fuel duty of motorcycles, and price subsidies for purchasers.

Personal mobility has a number of harmful effects on the environment due to the prevailing use of fossil fuels. Spreading ownership and the use of electric motorcycles is widely considered as a symptom of unsustainable transport (Newman and Kenworthy, 1989). Motor vehicle use is seen as a major contributor to climate change, air pollution (Litman, 2002) and oil dependence (Leung, Burke, Perl, and Cui, 2017). In order to mitigate the negative effects of personal transport, electrification (e-mobility) is proposed and increasingly being adopted by governments worldwide. The purpose of most electrification policies is to improve local pollution levels and to tackle climate change by tapping into renewable power sources (Gilbert and Perl, 2010). Global

motor vehicle ownership exceeds 1.7 billion units (WHO, 2015), but less than 0.2% of the global light duty vehicle fleet are electrically powered (OECD/IEA, 2017). A large proportion of electric motorcycles are privately owned, so the adoption of electric vehicles (EV) relies heavily on consumers' perception of them (Schuitema, Anable, Skippon, and Kinnear, 2013). Consequently, it is important to understand the consumers' motives in using EV's, in order to successfully promote or market them.

1.1. Powered two-wheeler aberration

Historically, motor vehicle ownership has been closely related to per-capita income, but the relationship is non-linear. The highest growth rates are historically observed when annual income levels range from 3,000-10,000 US\$. Europe and Japan already had a few individuals at this income level by the 1960s, but highly populated, developing countries in Asia currently have many individuals in this mid-income range (Dargay et al., 2007).

This historic observation may not hold in Asia. Taiwan has an economic ranking that is similar to Germany's, in terms of GDP per capita (PPP) (IMF, 2017). The 10,000 USD income level was surpassed during the 2000s. While car ownership did increase, Taiwan still has the highest ratio of PTW per capita in the world. Many households own both cars and motorcycles and use them for different types of trips. A similar development can be expected in other South-East-Asian countries, such as Vietnam, Indonesia or Thailand. These have a similar climate, high population density and are home to much of the global motorcycle fleet. Law et al. (2015, p127) noted that, "there is always a time lag between economic growth and the motorcycle to passenger car ownership ratio". However, the substitution of motorcycle ownership to car ownership has been found to be statistically insignificant. Wen et al. (2012) noted that motorcycles are preferable for short-range transport, even for car owners. This study also found that household income is not significantly associated with motorcycle ownership and that moderate increases in the price of gasoline trigger a shift from car to motorcycle usage. From a lifecycle perspective, electric motorcycles have the potential to reduce energy consumption and harmful emissions (Del Duce, 2011). However, the lack of rider protection at high speeds remains a major issue and much research has been focused on safety (Haworth, 2012, Van Elslande and Elvik, 2012). The contribution to (or rather the obstruction of) traffic flow and the way in which PTW's affect road capacity and traffic performance is problematic (Hsu et al., 2003). There are pros and cons to the use of electric motorcycles for future mobility, but the increasing growth cannot be ignored, and is a motivation for this study.

Under the current research background, the increase of energy generation cost and the market price rise constitute the main barriers for consumers to adopt green energy (Salmela and Varho, 2006). Although opinion polls show consumers are willing to pay a premium for green energy (Eurobarometer, 2003, 2005, Zarnikau, 2003), Green energy company's market share is still very low (Gan, Eskeland, and Kolshus, 2007). The cost of green energy is higher than conventional power, which discourages many potential consumers (Salmela and Varho, 2006). The future success of green energy depends on effective branding and marketing communication strategies that can improve consumer perceptions (Roe, Teislb, Levyc, and Russell, 2001, Truffer, Markard, and Wüstenhagen, 2001).

Although technical features and green electric marks provide consumers with utilitarian benefits, the purchase of green products may have psychological benefits. With the improvement of living standard, people pay more and more attention to the sustainability of the environment. An environment-friendly utilization and production system should be established. Green use behavior is influenced by many factors. The willingness of consumers and the ability to engage in green use are critical (Peattie, 2010). Diffusion of green use is a huge challenge. More and more literatures show that the government should play a central role in promoting green utilization (Norberg-Bohn, 1999, Stevens, 2010, Young et al., 2010, Tran, 2012, Tseng et al., 2013, Lorek and Spangenberg, 2014, Frederiks et al., 2015, Testa et al., 2015).

In Taiwan, the government is pushing for carbon-reduction efforts and is expected to push 6 low-carbon cities and complete 4 low-carbon life cycles in 2020. Designate the construction of Kinmen and Penghu county as low carbon islands. Kinmen is located on the mainland of the Fujian southeast Xiamen Bay, three sides of the mainland around the west from Xiamen output 10 nautical miles, east across the Taiwan Strait and 150 nautical miles apart. This study contributes to the consumer preference of electric motorcycles in three main ways. First, it adds an additional and substantial difference in the location of the case. In the existing studies in Asia, Vietnam, China and Taiwan, Kinmen is smaller and has a higher share of motorcycle models than any other city. This size and relative dependence on motorcycles makes it a better case for small and medium scale fast-growing motorcycle cities. Second, the survey provides an electric alternative to the fee infrastructure based on the tourism environment. This contrasts with most of the schemes proposed in the current study of consumer preferences for high-power electric motorcycles (Jones et al., 2013, Chiu and Tzeng, 1999). While fast-charging and battery swaps may make electric vehicles more appealing, these charging systems require expensive infrastructure investments that may take years to achieve. Third, the survey includes more questions about consumer preferences for electric motorcycles and concerns about the local and global environment. The data

provide an estimate of how much environmental-conscious respondents are willing to put on a motorcycle.

This paper is structured as follows: Section 2 describes the methodology, including the scope of research and objective. Section 3 presents results, Section 4 explains the results. Section 5 concludes the results and discusses their policy implications for the suggestion.

1.2. Energy policy Management

This study looks forward to the strategy of energy policy management, to promote the green transport of the Low Carbon Island, through the Division of labor and responsibility of each management, carry out supporting measures. Through the Plan, DO, Check, Actions to carry out the exact implementation, to explore problems, continuous improvement, effectively improve the overall driving efficiency.

Important strategies include:

(1) Setting up the " Self-governance articles for Low Carbon Island "

The target of the Low Carbon Island, the ultimate goal is to prohibit the entry of motorcycles as the main, so in the promotion process, on the one hand to promote and revise the implementation strategy, on the other hand, the provision of self-governance articles, the future restrictions on the entry of motorcycles into the island policy announcement.

(2) Convene a communication and coordination meeting

According to the various demands of the public, the government departments invited the relevant departments to convene a coordination meeting to explain the supporting measures, and seek public identification and support.

(3) Set up battery exchange stations with the business.

The electric motorcycles battery exchange station located in the vicinity of tourist attractions, by the combination of business and battery exchange station set up to encourage visitors in the exchange of batteries, can stay longer time, increase consumption opportunities.

(4) Low Carbon Island Public production Fund

The proceeds of electric motorcycles are used to establish Low Carbon Island public production fund, after deducting the related costs, into the public production fund. Apart from being a perpetual trading fund for electric motorcycles, it can also serve as a source of funding for other low-carbon measures, if necessary.

(5) Provide renewable energy charging system

To promote the use of motor vehicles to achieve carbon reduction benefits, the charging power source is with the Taiwan, National Chung Shan Institute of Science and Technology (NCSIST) on the island set up a micro-grid storage System combined (PV 45.9kW, Wind turbine 3kW, storage power 140kWh), the system in the daytime to provide surplus wind power as a battery power source.

This paper is structured as follows: Section 2 describes the methodology, including the scope of research and objective. Section 3 presents results, Section 4 explains the results. Section 5 concludes the results and discusses their policy implications for the suggestion

II. Methodology

2.1. Scope of research

In order to better understand the complex nature of powered two-wheelers (PTW) (Sperling and Gordon, 2009), a typology for electric motorcycles (EM) is proposed. This study combined with island tourism, after boarding the island, visitors can rent electric motorcycles from the passenger service center (electric motorcycle leasing station) and coordinate with the island Tour map to show the location of the roundabout, the locations of the spots, the location of the battery exchange points and the road rescue and emergency contact telephone information, so as to facilitate the search. Through the collection of relevant data to understand the behavior patterns of tourists and the amount of pollution reduction.

2.2. Objective

The objective of this study was followed

- (1) Create a Low-carbon life circle, implement carbon reduction, the low-carbon concept in daily life.
- (2) Reduce energy consumption and reduce carbon dioxide emissions.
- (3) Constructed with the best use of motor vehicle environment, providing the best business model.

III. Results

3.1. Set electric motorcycles battery exchange station

The Terminal passenger Service Centre (S1) provides battery Exchange services, the choice of other battery exchange locations is to provide tourist convenience as the primary consideration, after space analysis, selected tourist attractions near, respectively, in Warrior Fort (S2), Lake well Head (S3), General Temple (S4), Rijo Temple (S5) and the city center 7-11 convenience Stores (S6). A total of 5, providing battery Exchange services, of which S6 is a 24-hour battery Exchange station, giving visitors the most convenient service. The

relative position of the battery Exchange station settings is shown in Figure 1.

(Insert Figure 1)

3.2. Electric motorcycles and battery usage

In 2017, planners handled electric motorcycle tours, recording daily electric motorcycle rentals and battery exchange operations, and electric motorcycle maintenance records (including battery wear). The results show that the total number of electric motorcycle leased in the operation period is 15,551, from January to December, respectively leasing 1,057 trips, 1,077 trips, 1,510 trips, 1,455 trips, 1,412 trips, 1,256 trips, 1,442 trips, 1,210 trips, 1,056 train, 1,243 train, 1,430 train and 1,394 trips, according to the data, the promotion period due to leasing concessions, and is a tourist season, in addition to the beginning (January-February) during the promotion period, leasing trips are showing positive growth trend (shown in Figure 2).

(Insert Figure 2)

At the same time, the analysis of non-holiday and holiday lease electric motorcycles, showing the January non-holiday period (Monday to Friday) the average daily lease electric motorcycles for 25 trips, holidays (Saturday, Sunday) Average daily lease electric motorcycles for 59; February non-holiday period (Monday to Friday) The average daily lease electric motorcycles for the 28 train, Holiday (Saturday, Sunday) Average daily lease electric motorcycles for 55 trips; March non-holiday period (Monday to Friday) Average daily lease electric motorcycles for 30 trips, holidays (Saturday, Sundays) Average daily lease electric motorcycles for 53 trips respectively ; During the April non-holiday period (Monday to Friday), the average daily lease electric motorcycles for 35 trips, holidays (Saturday, Sunday) Average daily lease electric motorcycles for 68 trips; May non-holiday period (Monday to Friday) Average daily lease electric motorcycles for 34 trips, holidays (Saturday, Sundays) The average daily lease electric motorcycles is 73 vehicles respectively; June non-holiday period (Monday to Friday) the average daily lease electric motorcycles for 34 trips, holidays (Saturday, Sunday) Average daily lease electric motorcycles for 67 trips; July non-holiday period (Monday to Friday) Average daily lease electric motorcycles for 36 trips , Holiday (Saturday, Sunday) The average daily lease electric motorcycles is 63 vehicles respectively; August non-holiday period (Monday to Friday) the average daily lease electric motorcycles for 32 trips, Holiday (Saturday, Sunday) Average daily lease electric motorcycles respectively for 53 trips; September non-holiday period (Monday to Friday) The average daily lease electric motorcycles for the 22 trips, Holiday (Saturday, Sunday) Average daily lease electric motorcycles for 45 trips; October non-holiday period (Monday to Friday) Average daily rental electric motorcycles for 26 trips, holidays (Saturday, Sundays) Average daily lease electric motorcycles for 69 trips respectively ; During the November non-holiday period (Monday to Friday), the average daily lease electric motorcycles for 30 trips, holidays (Saturday, Sunday) Average daily lease electric motorcycles for 70 trips; December non-holiday period (Monday to Friday) Average daily lease electric motorcycles for 28 trips, holidays (Saturday, Sundays) The average daily lease electric motorcycles is 65 trips respectively (shown in Figure 3, 4).

(Insert Figure 3, 4)

Further, statistics of the number of leases for each period of time, as at the end of December, the total operation of 362 days, the number of leases for each period, from 8:00 to 9:00 for 1,220 trips, the average 2.9 trips, holiday average 3.1 trips; 9:00 to 10:00 for 2,782 trips, Non-holiday average 4.0 trips, holiday average of 13.5 trips; 10:00 to 11:00 for 3,254 trips, non-holiday average 5.5 trips, holiday 16.4 average trips, 11 o'clock to 12 o'clock 2,418 trips, non-holiday average 4.6 trips, holiday average 8.2 trips, 12:00 to 13:00 for 1,518 trips, non-holiday average 2.7 trips, holiday average of 5.2 trips; 13:00 to 14:00 for 1,366 trips, non-holiday average 3.0 trips, holiday average 4.8 trips; 14:00 to 15:00 for 1,586 trips, Non-holiday average 3.5 trips, holiday average 4.6 trips, 15:00 to 16:00 for 911 trips, non-holiday average of 1.7 trips, holiday average 3.8 trips, 16:00 to 17:00 for 356 trips, not holidays average 0.5 trips, holiday average 1.0 trips, 17:00 to 18:00 for 140 trips, non-holiday average 0.3 trips, holiday average 0.1 trips. According to the data, the number of leases is more than 9:00 to 12:00. The number of leases for each period are detailed in Figure 5 and Table 1, 2.

(Insert Figure 5)

(Insert Table 1, 2)

In addition to the battery exchange, the battery exchange station service personnel will be torn off the sticker, paste on the registration form and charge NT\$20 for exchange fees, people at the exchange stations to replace the battery count, as shown in Table 3 and Figure 6,7.

(Insert Table 3)
(Insert Figure 6, 7)

IV. Results Analysis

4.1. Carbon reduction and effectiveness evaluation

The total mileage of 100 electric motorcycles is 284,404 km, charge and discharge the total number of 11,060 times, charge once for 1 kWh, the average electricity can run about 38 km/kWh. To reduce carbon and economic benefits of the assessment, compared to the motorcycles (50 c.c), electric motorcycles (EM 100) can reduce the carbon emissions by 8,726 kg, reducing energy costs of NT\$422,594. Reductions in carbon and energy costs are detailed in Table 4.

(Insert Table 4)

4.2. SWOT analysis

For the island-driven motor vehicle process, the SWOT analysis, namely Strengths, Weakness, Opportunities and Threats analysis, such as Table 5. Compared with the general fuel motorcycle, the electric motorcycles analyses the opportunity that the influence of the external environment change may bring to the island driving motor vehicle and the challenge it may face. The analysis results show that the internal advantage and external opportunity of the electric motorcycles are the most important because of the government's environmental protection policy. The rise in environmental awareness, zero of pollution and low-noise electric motorcycles are expected, and the use of electric motorcycles to reduce energy consumption and carbon emissions; As for the internal disadvantage and external threat, the electric motorcycles endurance and horsepower are insufficient, the majority of people are still unable to enjoy the popular.

Further comparing the various cost estimates of electric motorcycles and general fuel motorcycles, electric motorcycles in the cost, every three years about more than the general fuel motorcycles savings of more than NT\$10,000, carbon emissions can be reduced by 50%, another according to the Taiwan government announced the annual Table of fixed asset durability, depreciation rate of fixed assets and relevant provisions of income tax law the endurance of the machine bicycle is three years, the price of motor vehicle and the durability of the car, with 3 years as the benchmark estimate, an average of one month the cost of NT\$1,865. Cost comparisons and amortization details are shown in table 6, 7.

(Insert Table 5 ,6, 7)

Given the design of the survey, it is not clear whether these consumers and at what price or quality level will be willing to consider electric motorcycles. Finally, the existing energy network may be difficult to deal with by increasing the energy demand from high permeable high-powered electric motorcycles. Overnight 100% for high-power electric motorcycles will require an estimated 63% of current energy consumption to maintain an average daily travel of 30 km per motorcycle (Guerra and Artavia, 2016).

Even a modest shift to low performance electric motorcycles can also pose a challenge to energy distribution. The probability of choosing electric motorcycles increases with the increase of speed, the endurance, the increase of charging time, the decrease of fuel cost and the decrease of monthly payment. This is intuitive, in line with existing research results, on price, quality and preferred alternative fuel vehicles (Beggs and Cardell, 1980, Brownstone et al., 2000, Brownstone and Train, 1998, Calfee, 1985, Daziano, 2013, Cherry and Cervero, 2007).

4.3. Business Cost Planning

This study purchased the cost of light electric motorcycles (100) and the original batteries (50 groups) NT\$6,99.6 million, the annual operating costs of NT\$819, 500, annual manpower costs NT\$1.32 million, annual depreciation costs NT\$383,100, it is estimated that the total cost of this year is NT\$9.4886 million.

The annual cost of the following year is NT\$2.5226 million, if according to the Table 4.7-3 evaluation method, the current implementation of the 12-month rental revenue costs NT\$800,000, therefore, the promotion of electric motorcycles need to compile about NT\$1.7 million of the budget to achieve the goal of sustainable operation. The proposed reduction of the budget is as follows: first, to increase the number of rental passengers, the second increases the rental costs. If the cost of NT\$252.26 to the current rental costs of 4 hours each time NT\$150 (not in the home), 365 days, the daily need to rent at least 47 vehicles. Rental costs can be adjusted up to NT\$450/day, such as weekdays cost 80 percent, local residents dozen 60 percent, or with local activities to introduce preferential programs.

(1) Initial cost (NT\$) = Light electric motorcycles (100) + original battery (50 groups)

(2) Annual operating fee (NT\$) = Battery cost NT\$670,000/year+ energy cost NT\$0.075/km×8000km (estimated driving mileage per year) ×100 vehicles/year + energy cost NT\$37,500/year + gear oil maintenance fee NT\$32,000/year + maintenance cost NT\$ 20,000/year.

(3) Annual manpower fee (NT\$) = 5 people × 12 months/year × NT\$22,000/person month.

(4) Annual depreciation fee (NT\$) = electric motorcycles initial setting Cost × $\frac{i \times (1+i)^n}{(1+i)^n - 1}$ = electric

motorcycles initial setting Cost × 0.055, i= annual interest rate (0.05), n= depreciation period (10 years)

(5) Annual cost = Annual operating fee + annual manpower, maintenance fee, depreciation fee

Further, the purchase of electric motorcycles and general fuel motorcycles cost analysis and comparison; in the cost of electric motorcycle purchases, the local government in the purchase of light electric motorcycle subsidy NT\$15,000 /vehicle, the central government subsidy of NT\$10,000 /vehicle, and if there is a replacement of the old two-stroke motorcycles to electric motorcycles, Taiwan EPA will subsidize NT\$3,000. Thus reducing the cost of electric motorcycle purchase. And in energy costs, regular maintenance costs, fuel tax and the cost of the purchase of batteries, three years as the benchmark estimate, the total cost of electric motorcycles is NT\$1,725, the general fuel motorcycles for NT\$30,750; to five years as the benchmark, the total cost of electric motorcycle is NT\$27,875, the general fuel motorcycle is NT\$48,700, 10 years as the benchmark estimate, the cumulative cost of motor vehicles is NT\$55,750, the general fuel motorcycles for NT\$98,000. The cumulative expenditure statistics are detailed as shown in Table 8.

(Insert Table 8)

V. Conclusions and Suggestion

5.1. Conclusions

The world is in the key era of energy transformation, Green Low-carbon energy development will play a key role in leading the third industrial Revolution, energy is not only the driving force for economic growth, green energy development is a new engine to drive economic development. Taiwan has adapted to this wave of energy transformation and mastered the opportunity of green growth. However, energy security involves national security, in the process of transformation, we need to ensure the stability and safety of the national energy supply, plan the reasonable structure of all kinds of energy, strengthen the communication of information openness, public participation and policy risk, so as to ensure the smooth process of energy transformation and the implementation of fairness and justice.

In Taiwan, the core values of energy policy take into account "Energy Security", "Green Economy", "Environmental Sustainability" and "Social Equity", the four major aspects of common governance and balance to promote sustainable development of energy.

The construction of Low-carbon environment in the "Environment is Sustainable" includes:

(1) The construction of Low-carbon living environment and low carbon recycling society, to promote the Community Low-carbon transformation Plan and the national energy-saving life campaign to accelerate Low-carbon social transformation.

(2) Accelerate the construction of a green transport network, the introduction of intelligent transportation system, and the promotion and use of Low-carbon energy-saving transportation, in order to construct human-oriented, safe and high efficiency green energy and low carbon traffic environment.

(3) Integrate local governments, use the resources of the land, build low-carbon urban and rural areas, create energy-saving and low-carbon living environment and change the urban texture to reduce the heat island effect, in order to expand the breadth of low-carbon governance.

In this paper, the potential of electric motorcycles on the island is studied by means of investigation. As in many fast-growing cities in Asia, Latin America and Africa (Law et al., 2015), the ownership and use of motorcycles have increased rapidly over the past two decades. Motorcycles offer inexpensive, relatively safe, easy point-to-point travel and control of transportation systems. However, they also reduce the quality of the urban environment and cause massive and harmful local pollution. Electric motorcycles can be explained by reducing one of the most damaging effects of motorcycles.

(1) Pre-matching inquiry

To complete the Zero Carbon Island target, to promote the operation of 100 electric motorcycles and battery demonstration, problems such as setting up the charging standard of motor car leasing, local industry rebound, incomplete vehicle certification and audit system, shipping vehicle charging standard and operation site, etc., so as to promote green transport.

Tourism satisfaction lies in transport facilitation and economic considerations, in order to enable people to jointly respond to carbon reduction action, the government set an incentive to rent charges, but also provide overnight island passengers, free rental 24-hour electric motorcycle.

Economic orientation, in order to increase the use of tourists, in addition to businesses set up battery exchange stations, prompting visitors to exchange batteries, and the introduction of "Carbon coupon", into the commodity consumption.

(2) Operating conditions

During the operation, the amount of electric motorcycle lease is 15,551 times, the total mileage of motor vehicle is 284,404 km, the number of battery exchange is 622 times, the lease income is about NT\$900,000.

In addition to January, February for the trial operation during the period of the lease fee has less income, the average monthly income between March to December is about NT\$80,000. Carbon coupon issued a total of 14,218, there is a use and exchange of 13,918, the utilization rate of 97%.

5.2. Suggestion

(1) To shoot marketing ads or short films to market island attractions to attract people's interest in Low-carbon Islands. In addition, it can be used with electric motorcycle general education and travel in depth.

(2) Electric motorcycles can be used across the islands, and provide an off-site return of services, so that tourists have a convenient and preferential choice.

(3) Rental costs may be adjusted, or a different lease-hours scheme can be introduced to increase the fixed income. In addition, schemes suitable for local residents, such as monthly, annual and hire-purchase schemes, can be introduced.

(4) In order to achieve the target of the low carbon island, it is suggested that in addition to the continuous promotion of green energy transport, we should speed up the scrap speed of the two-stroke motorcycles, so that the pollution can be effectively reduced.

References

- [1]. Acquaye, A.A., Duffy, A.P., 2010. Input–output analysis of Irish construction sector greenhouse gas emissions. *Build Environ.* 45, 784–91.
- [2]. Adnan, Muhammad, 2013. Passenger car equivalent factors in heterogenous traffic environment-are we using the right numbers? In: *Procedia Engineering, Fourth International Symposium on Infrastructure Engineering in Developing Countries, IEDC 2013*, vol. 77, pp. 106–113. <http://dx.doi.org/10.1016/j.proeng.2014.07.004>.
- [3]. Beggs, Steven, D., Cardell, N.S., 1980. Choice of smallest car by multi-vehicle households and the demand for electric vehicles. *Transp. Res. Part A: Gen.* 14 (5–6), 389–404. [http://dx.doi.org/10.1016/0191-2607\(80\)90057-6](http://dx.doi.org/10.1016/0191-2607(80)90057-6).
- [4]. Brownstone, David, Bunch, David S., Train, Kenneth, 2000. Joint mixed logit models of stated and revealed preferences for alternative-fuel vehicles. *Transp. Res. Part B: Methodol.* 34 (5), 315–338. [http://dx.doi.org/10.1016/S0191-2615\(99\)00031-4](http://dx.doi.org/10.1016/S0191-2615(99)00031-4).
- [5]. Brownstone, David, Train, Kenneth, 1998. Forecasting new product penetration with flexible substitution patterns. *J. Econom.* 89 (1–2), 109–129. [http://dx.doi.org/10.1016/S0304-4076\(98\)00057-8](http://dx.doi.org/10.1016/S0304-4076(98)00057-8).
- [6]. Calfee, John, E., 1985. Special issue economic models of automobile demand estimating the demand for electric automobiles using fully disaggregated probabilistic choice analysis. *Res. Part B: Methodol.* 19 (4), 287–301. [http://dx.doi.org/10.1016/0191-2615\(85\)90037-2](http://dx.doi.org/10.1016/0191-2615(85)90037-2).
- [7]. Chang, Y., Ries, R. J., Wang, Y., 2010. The embodied energy and environmental emissions of construction projects in china: an economic input–output LCA model. *Energy Policy* 38, 6597–603.
- [8]. Chery, Christopher, Cervero, Robert, 2007. Use characteristics and mode choice behavior of electric bike users in China. *Transp. Policy* 14 (3), 247–257. <http://dx.doi.org/10.1016/j.tranpol.2007.02.005>.
- [9]. Chiu, Y.C., Tzeng, G.H., 1999. The market acceptance of electric motorcycles in Taiwan experience through a stated preference analysis. *Transp. Res. Part D* 4 (2),
- [10]. Dargay, J., Gately, D., Sommer, M., 2007. Vehicle Ownership and Income Growth, Worldwide: 1960-2030. *Energy J.* 28(4), 143–170.
- [11]. Daziano, Ricardo A., 2013. Conditional-logit Bayes estimators for consumer valuation of electric vehicle driving range. *Resour. Energy Econ.* 35 (3), 429–450. <http://dx.doi.org/10.1016/j.reseneeco.2013.05.001>.
- [12]. Del Duce, A., 2011. Life Cycle Assessment of conventional and electric bicycles. In Eurobike 2011 conference. Retrieved from http://www.eurobike-show.com/ebwAssets/daten/rahmenprogramm/pdf/LifeCycl eAssessment_DelDuce_englisch.pdf.
- [13]. Fan, Henry S.L., 1990. Passenger car equivalents for vehicles on Singapore expressways. *Transp. Res. Part A: Gen.* 24 (5), 391–396. [http://dx.doi.org/10.1016/0191-2607\(90\)90051-7](http://dx.doi.org/10.1016/0191-2607(90)90051-7).
- [14]. Eurobarometer, 2003. Energy: Issues, options and technologies, science and society. A report produced by The European Opinion Research Group (EORG) for the Directorate-General for Research, Luxembourg.
- [15]. Frederiks, E.R., Stenner, K., Hobman, E.V., 2015. Household energy use: applying behavioural economics to understand consumer decision-making and behavior. *Renew. Sust. Energ. Rev.* 41, 1385–1394.
- [16]. Gan, L., Eskeland, G.S., Kolshus, H.H., 2007. Green electricity market development: lessons from Europe and the US. *Energy Policy* 35(1), 144–155.
- [17]. Gilbert, R., Perl, A., 2010. *Transport revolutions: moving people and freight without oil* (Revised and updated. ed., 2. ed.). Gabriola Island, BC: New Society.
- [18]. Guerra, Erick, Artavia, Lucia, 2016. Energy Production and the Potential for Electric Motorcycles in Solo and Central Java, Indonesia. *Policy Digest*. Kleinman Center for Energy Policy. <<http://kleinmanenergy.upenn.edu/policy-digests/energy-production-and-potential-electric-motorcycles-solo-and-central-java-indonesia>>.
- [19]. Hamzah, A., Haworth, N., 2012. Powered two wheelers in a changing world—Challenges and opportunities. *Accident Anal. Prev.* 44(1), 12–18. <https://doi.org/10.1016/j.aap.2010.10.031>.
- [20]. Hsu, T.-P., Sadullah, A.F.M., Dao, N.X., 2003. A comparison study on motorcycle traffic development in some Asian countries—case of Taiwan, Malaysia and Vietnam. The Eastern Asia Society for Transportation Studies (EASTS), Int.Cooperative Res. Activity. Retrieved from <http://citeseerx.ist.psu.edu/viewdoc/download?doi=10.1.1.460.2229&rep=rep1&type=pdf>
- [21]. Huang, S.K., Kuo, L., Chou, K.L., 2018. The impacts of government policies on green utilization diffusion and social benefits – A case study of electric motorcycles in Taiwan. *Energy Policy* 119, 473–486.
- [22]. IMF, 2017. World Economic Outlook (April 2017) - Nominal GDP per capita. Retrieved September 15, from <http://www.imf.org/external/datamapper/NGDPDPC@WEO>

- [23]. Inter-governmental Panel on Climate Change, 2014. IPCC Fifth Assessment Report, IPCC. Retrieved on 18 April from < <http://ipcc.ch/report/ar5/> >.
- [24]. Jones, Luke, R., Cherry, Christopher R., Vu, Tuan A., Nguyen, Quang N., 2013. The effect of incentives and technology on the adoption of electric motorcycles: a stated choice experiment in Vietnam. *Transp. Res. Part A: Policy Pract.* 57 (November), 1–11. <http://dx.doi.org/10.1016/j.tra.2013.09.003>.
- [25]. Law, T.H., Hamid, H., Goh, C.N., 2015. The motorcycle to passenger car ownership ratio and economic growth: A cross-country analysis. *EI95 Manual For Designers*. Pdf. 46, 122–128. <https://doi.org/10.1016/j.jtrangeo.2015.06.007>
- [26]. Leung, A., Burke, M., Perl, A., Cui, J., 2017. The peak oil and oil vulnerability discourse in urban transport policy: A comparative discourse analysis of Hong Kong and Brisbane. *Transport Policy* <https://doi.org/10.1016/j.tranpol.2017.03.023>
- [27]. Litman, T., 2002. Evaluating Transportation Equity. *World Transport Policy and Practice* 8(2), 50–65.
- [28]. Lorek, S., Spangenberg, J.H., 2014. Sustainable consumption within a sustainable economy-beyond green growth and green economies. *J. Clean. Prod.* 63, 33–44.
- [29]. Newman, P. W. G., Kenworthy, J.R., 1989. Gasoline Consumption and Cities: A Comparison of U.S. Cities with a Global Survey. *J. Am. Plann. Assoc.* 55(1), 24–37. <https://doi.org/10.1080/01944368908975398>
- [30]. Norberg-Bohn, V., 1999. Stimulating green technological innovation: an analysis of alternative policy mechanisms. *Policy Sci.* 32, 1338. OECD/IEA, 2017. Global EV Outlook. Retrieved from <https://www.iea.org/publications/freepublications/publication/GlobalEVOutlook2017.pdf>
- [31]. Peattie, K., 2010. Green consumption: behavior and norms. *Annu. Rev. Env. Resour.* 35, 195–228.
- [32]. Peters, G.P., 2008. From production-based to consumption-based national emission inventories. *Ecol Econ.* 65, 13–23.
- [33]. Roe, B., Teisl, M.F., Levyc, A., Russell, M., 2001. US consumers' willingness to pay for green electricity. *Energy Policy* 29, 917–925.
- [34]. Rongviriyapanich, Terdsak, Suppatrakul, Charong, 2005. Effects of motorcycles on traffic operations on arterial streets. *J. Eastern Asia Soc. Transp. Stud.* 6, 137–146. <http://dx.doi.org/10.11175/easts.6.137>.
- [35]. Salmela, S., Varho, V., 2006. Consumers in the green electricity market in Finland. *Energy Policy*, 34 (18), 3669–3683.
- [36]. Schuitema, G., Anable, J., Skippon, S., Kinnear, N., 2013. The role of instrumental, hedonic and symbolic attributes in the intention to adopt electric vehicles. *Transp. Res. Part A: Policy Pract.* 48, 39–49. <https://doi.org/10.1016/j.tra.2012.10.004>
- [37]. Sperling, D., Gordon, D., 2009. *Two Billion Cars: Driving Toward Sustainability*. Oxford University Press.
- [38]. Stevens, C., 2010. Linking sustainable consumption and production: the government role. *Nat. Resour. Forum* 34, 16–23.
- [39]. Testa, F., Cosic, A., Iraldo, F., 2015. Determining factors of curtailment and purchasing energy related behaviors. *J. Clean. Prod.* 1–10. <http://dx.doi.org/10.1016/j.jclepro.2015.07.134>.
- [40]. Tran, M., 2012. Technology-behavioural modelling of energy innovation diffusion in the UK. *Appl. Energy* 95, 1–11.
- [41]. Truffer, B., Markard, J., Wüstenhagen, R., 2001. Eco-labeling of electricity –Strategies and tradeoffs in the definition of environmental standards. *Energy Policy* 29(11), 885–897.
- [42]. Tseng, M.L., Chiu, S.F., Tan, R.R., Anna, B.S.M., 2013. Sustainable consumption and production for Asia: sustainability through green design and practice. *J. Clean. Prod.* 40, 1–5.
- [43]. Van Elslande, P., Elvik, R., 2012. Powered two-wheelers within the traffic system. *Accident Anal. Prev.* 49, 1–4. <https://doi.org/10.1016/j.aap.2012.09.007>
- [44]. Wen, C.-H., Chiou, Y.-C., Huang, W.-L., 2012. A dynamic analysis of motorcycle ownership and usage: A panel data modeling approach. *Accident Anal. Prev.* 49, 193–202. <https://doi.org/10.1016/j.aap.2011.03.006>
- [45]. WHO, 2015. WHO | Global status report on road safety. Retrieved from http://www.who.int/violence_injury_prevention/road_safety_status/2015/en/
- [46]. Yeung, J.S., Wong, Y.D., Secadiningrat, J.R., 2015. Lane-harmonised passenger car equivalents for heterogeneous expressway traffic. *Res. Part A: Policy Pract.* 78 (August), 361–370. <http://dx.doi.org/10.1016/j.tra.2015.06.001>.
- [47]. Young, W., Hwang, K., McDonald, S., Oates, C.J., 2010. Sustainable consumption: green consumer behavior when purchasing products. *Sustain. Dev.* 18, 20–31.
- [48]. Zarnikau, J., 2003. Consumer demand for 'green power' and energy efficiency. *Energy Policy*, 31(15), 1661–1672.



Figure 1 Battery exchange station location

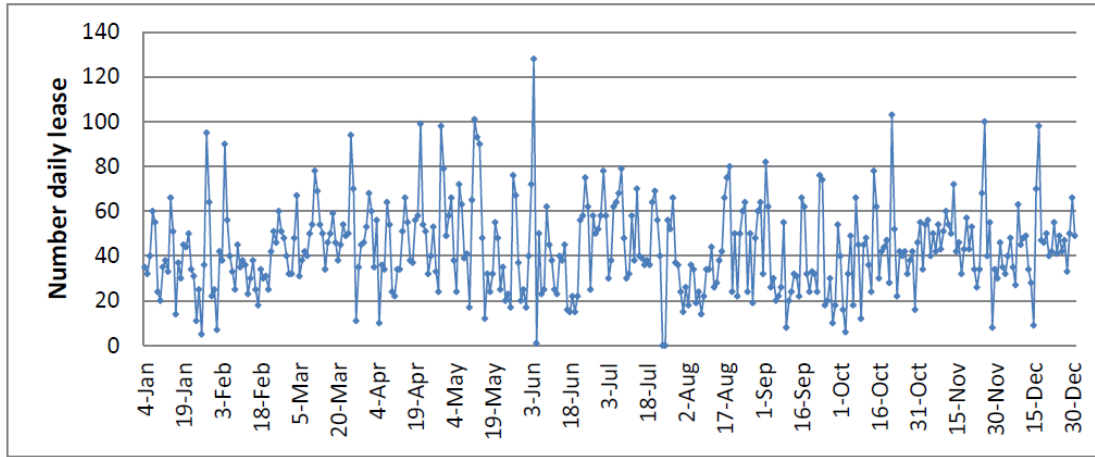


Figure 2 Daily lease count of electric motorcycles

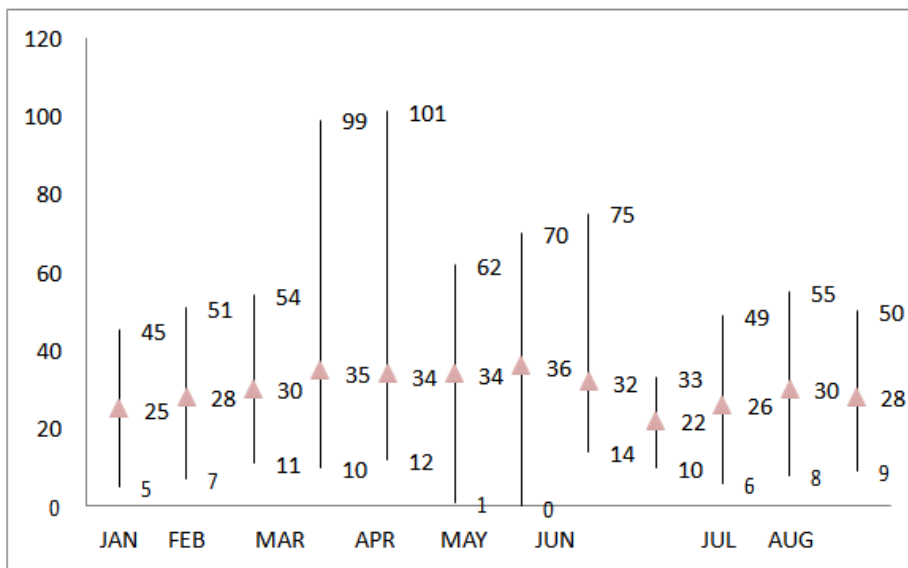


Figure 3 Analysis of leased trips during non-holiday

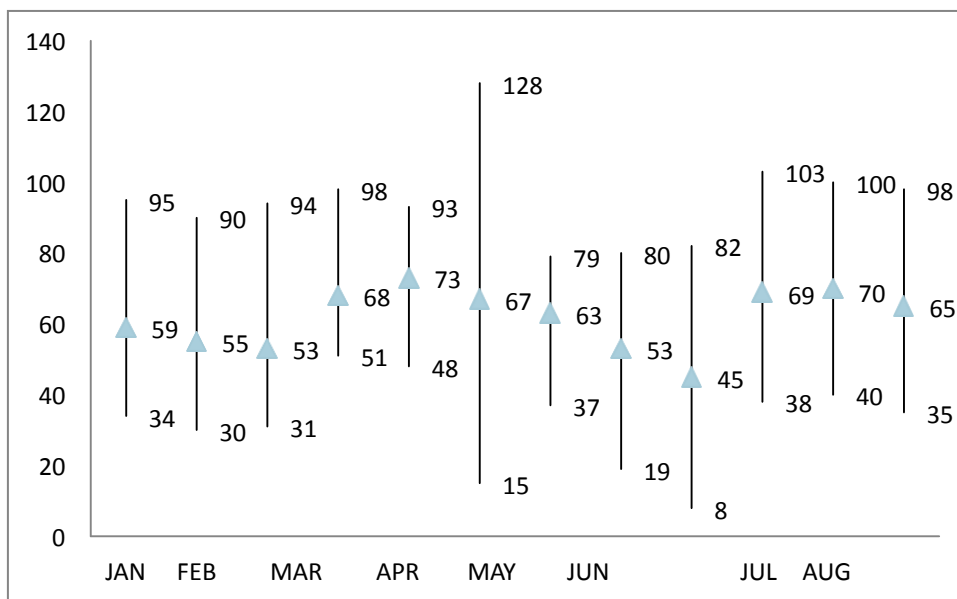


Figure 4 Analysis of leased trips during holidays

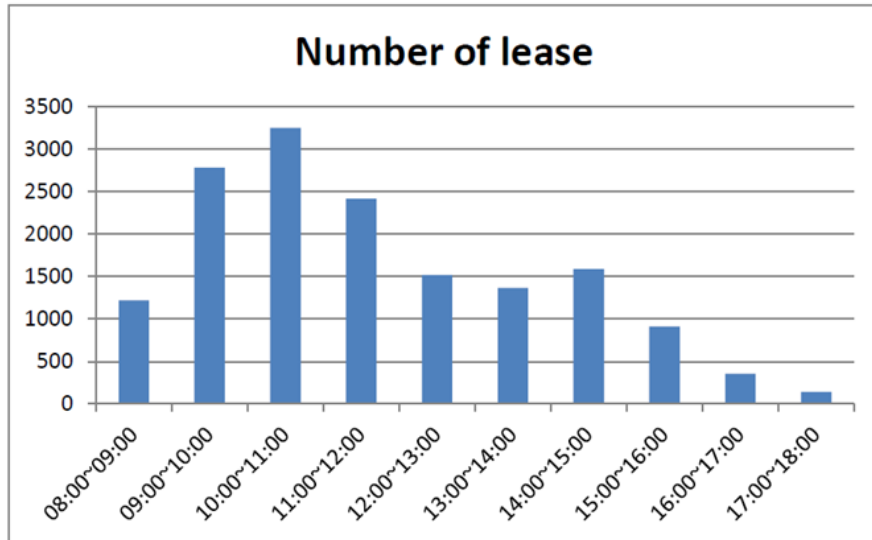


Figure 5 Statistics on the number of leases in each period of a day



Figure 6 User advanced battery replacement

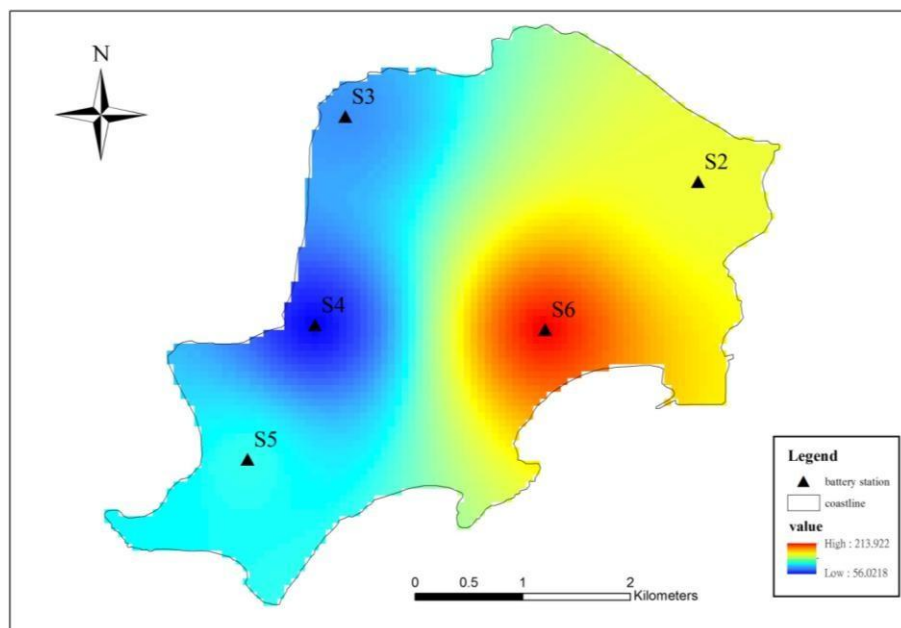


Figure 7 Concentration diagram of battery Exchange quantity of battery exchange station

Table 1: Average of leased trips during non-holiday periods

Period of a day	08-09	09-10	10-11	11-12	12-13	13-14	14-15	15-16	16-17	17-18
JAN	3.2	3.1	3.7	2.2	1.5	3.6	3.3	1.4	0.5	0.3
FEB	3	3.0	3.4	2.8	1.6	3.5	3.2	1.4	0.4	0.5
MAR	3	3.3	3.8	2.9	1.8	3.7	3.5	1.6	0.3	0.4
APR	4	4.2	4.9	4.0	2.2	4.3	4.1	2.5	0.7	0.7
MAY	5	4.5	5.9	4.3	2.3	4.1	4	2.2	0.6	0.6
JUN	3.4	7.9	8.1	5.4	3	2.5	4	1.7	0.4	0
JUL	3.1	5.4	7.8	7	4.4	3	2.6	1.4	0.5	0
AUG	2	0.7	7.5	6	2.5	2.3	3.3	2	0.5	0
SEP	0.9	3.6	3.9	5	2.3	1.5	3	1.6	0.9	0.1
OCT	2.4	4	5.7	5	3.4	2.3	3.9	1.4	0.6	0
NOV	2.6	4.3	5.6	5.5	3.8	2.6	3.7	1.9	0.5	0.3
DEC	2.5	4.4	5.8	5.2	3.9	2.1	3.2	1.3	0.6	0.5
Average	2.9	4	5.5	4.6	2.7	3	3.5	1.7	0.5	0.3

Table 2: Average of leased trips during holiday periods

Period of a day	08-09	09-10	10-11	11-12	12-13	13-14	14-15	15-16	16-17	17-18
JAN	2.4	12.5	20.0	6.2	5.3	4.9	3.4	4.0	0.8	0.1
FEB	2.1	12.1	19.5	5.0	4.2	4.8	3.0	4.3	1.1	0.1
MAR	2.3	13.1	20.2	6.0	5.0	4.7	3.2	4.1	0.9	0.2
APR	2.6	16.3	21.4	7.0	5.2	5.1	3.8	4.5	0.8	0.3
MAY	3.6	16.6	22.5	7.8	6.3	5.3	4.3	5	0.9	0.4
JUN	7.6	13.8	11.6	9.2	5.9	5.8	4.7	4	1.4	0.1
JUL	5.5	13.8	14.1	15.3	6.3	2.5	4.1	1.8	0.3	0
AUG	3.3	8.9	14.7	5.2	3.2	6.3	5.2	3.8	1.8	0
SEP	1	12.3	9.4	5	5.3	3.1	4.1	2.4	0	0
OCT	2.5	14.4	14.8	11	5.1	5.1	6.5	4.1	1	0
NOV	2.3	14.1	14.7	10	5.5	5.3	6.1	3.3	1.2	0.1
DEC	2.1	13.9	14.2	10.5	5.2	5.1	6.7	4.0	1.3	0.2

Table 3: Battery Exchange Quantity statistics

Battery exchange station	S2	S3	S4	S5	S6	Subtotal
JAN	2	4	6	6	12	30
FEB	3	5	7	5	14	34
MAR	1	3	7	4	13	28
APR	4	6	10	7	16	43
MAY	1	8	9	5	15	38
JUN	7	11	13	3	19	53
JUL	11	13	19	9	29	81
AUG	9	17	16	7	31	80
SEP	3	8	11	15	13	50
OCT	4	11	18	8	17	58
NOV	6	13	20	10	19	68
DEC	5	12	19	7	16	59
Total	56	111	155	86	214	622

Table 4: Carbon reduction and effectiveness evaluation

Vehicle types ⁽¹⁾	Emissions per unit of pollutant g/km ⁽²⁾		Mileage of driving	Carbon emissions (kg/12months)	Cost of energy (NT\$/12months) ⁽³⁾
	CO	CO ₂			
Motorcycle 50c.c	3.5	57.18		CO: 996/CO2: 6,262	445,046
Electric motorcycle (EM 100)	-	30	284,404	8,532	22,452
Carbon reduction and effectiveness evaluation of economic benefits				-8,726 (-51%)	-422,594(-95%)

Note: (1) Assessment of vehicle types: Because of the horsepower relationship with 50c.c fuel vehicles, as electric motorcycles (EM3A6 (extraction 20Ah) 100) comparison basis. (2) Pollutant emission basis: Taiwan EPA website <http://ncs.epa.gov.tw/BB/B-02c0.htm> (3) carbon emission and energy cost calculation benchmark (fuel vehicle oil consumption: 20 km/L, reference oil price of NT\$32 /liter; electric vehicle energy consumption: 38 km/kWh, reference electricity price is NT\$3 /kWh)

Table 5: The SWOT analysis of electric motorcycle driving

Strengths	Weakness
<ol style="list-style-type: none"> 1.The operating cost is 1/3 of the motorcycles. 2.Rents are cheaper than motorcycles. 3.Save energy consumption and reduce carbon emissions. 4.Low pollution and low noise can help improve the living quality of residents. 5.Near the dock, it is advantageous for the tourists to borrow the car. 	<ol style="list-style-type: none"> 1. Insufficient horsepower, unable to meet the pursuit of speed of people. 2. Cannot be used across the island. 3. Endurance is inferior to the motorcycle.
Opportunities	Threats
<ol style="list-style-type: none"> 1.Government policy development. 2.The charging station matches the scenic spot, promotes the quality and the regional sightseeing tour, drives the attraction profit. 3.The islands belong to the Closed field, promote Lohas, slow tour, and help promote electric motorcycles. 	<ol style="list-style-type: none"> 1.The choice of motorcycle is much more, and the people are easy to accept. 2.Impact on local car rental operators and taxi operators.

Table 6: Cost comparison between electric motorcycle and general fuel motorcycle

Item	Vehicle types	Light electric motorcycle	Light motorcycle
Price (NT\$)		50,000~70,000	50,000~60,000
Amount of government subsidy	Central government (NT\$)	10,000	0
	Taiwan EPA (NT\$) subsidy	3,000	0
	Local government (NT\$)	(Replacement of two-stroke locomotive for electric motorcycle) 15,000	0
Actual purchase price (Price -Amount of government subsidy) (NT\$)		40,000~50,000	50,000~60,000
Battery cost (NT\$)		15,000~25,000	0
		(Securing 30000 km or Securing 3years)	
License tax (NT\$)		0	0
Fuel tax (per two years) (NT\$)		0	600
Energy costs (NT\$/km) ⁽¹⁾ (NT\$)		0.075	1.6
Cumulative energy costs for 3 years (Battery replacement fee not included) ⁽²⁾ (NT\$)		1,125	24,000
Regular maintenance costs (NT\$)	Engine oil	0	200 (per 1000km)
	Gear oil	80 (per 2000km)	80 (per 2000km)
	Air filter	0	300 (per 5000km)
Cumulative maintenance costs for 3 years (Only the above maintenance items) ⁽³⁾ (NT\$)		600	4,500
3 Year Depreciation ⁽⁴⁾		0.536/year	0.536/year
Pollution amount ⁽⁵⁾	SOx (g/km)	0.0384	-
	CO (g/km)	0	Less than 3.5
	HC+NOx (g/km)	0.0492	Less than 2.0
	CO2 (g/km)	30	57.18
Note:			
(1) The electric motorcycles fills about 1 kWh each time, fills one time electricity tariff about NT3, endurance about 40 km; the average fuel motorcycle can run 20 km/L (92 unleaded petrol at NT\$32/L).			
(2) The average driving distance of 13.6 km per person, three years about 15,000 km.			
(3) The calculation method of the regular maintenance cost is calculated in 15,000 km in 3 years.			
(4) According to the government announced the annual Table of fixed assets, fixed assets depreciation rate and income tax regulations. The endurance of the machine bike is three years, and it has depreciated by 0.536 per annum according to the method of decreasing rate.			
(5) Implement the emission standard of the new vehicle in the three-phase regulation of locomotive in 1998. Motorcycle cold running, traffic jam, poor maintenance, high pollution, and is a mobile pollution source, prevention and control is not easy, high cost.			

Table 7: Electric motorcycle price and durable amortization (NT\$)

Service life	1th year	2th year	3th year
1th month	67,160	44,773	22,386
2th month	65,294	42,907	20,520
3th month	63,429	41,042	18,655
4th month	61,563	39,176	16,789
5th month	59,698	37,310	14,924
6th month	57,832	35,445	13,058
7th month	55,966	33,579	11,193
8th month	54,101	31,714	9,327
9th month	52,235	29,848	7,462
10th month	50,370	27,982	5,596
11th month	48,504	26,117	3,731
12th month	46,638	24,251	1,865

Note: Price and durable life (starting from the date the vehicle are manufactured and finished)

Table 8: Cumulative expenditure of electric motorcycle and general fuel motorcycle

Item	Vehicle types	Light electric motorcycle	Light motorcycle
Cost of purchase (NT\$)		40,000~50,000	50,000~60,000
Three-year accrued expenditure	Energy costs ⁽¹⁾ (NT\$)	1,125	24,000
	Regular maintenance costs	600	4,500
	(2) (3) (NT\$)		
Fuel tax ⁽⁴⁾ (NT\$)		0	600
Subtotal (NT\$)		1,725	30,750
Five-year accrued expenditure	Energy costs ⁽¹⁾ (NT\$)	1,875	40,000
	Regular maintenance costs	1,000	7,500
	(2) (3) (NT\$)		
Fuel tax ⁽⁴⁾ (NT\$)		--	1,200
Battery cost ⁽⁵⁾ (NT\$)		25,000	--
Subtotal (NT\$)		27,875	48,700
Ten-year accrued expenditure	Energy costs ⁽¹⁾ (NT\$)	3,750	80,000
	Regular maintenance costs	2,000	15,000
	(2) (3) (NT\$)		
	Fuel tax ⁽⁴⁾ (NT\$)	--	3,000
	Battery cost ⁽⁵⁾ (NT\$)	50,000	--
	Subtotal (NT\$)	55,750	98,000

- (1) Energy cost and regular maintenance cost calculation method, the average day mileage per person is 13.6 km, 3 years 15,000 kilometers, 5 years 25,000 kilometers, 10 years 50,000 kilometers calculation. (Fuel oil consumption: 20 km/L, reference oil price of NT\$32/L; electric motorcycle energy consumption: 40 km/h, reference electric motorcycle price is NT\$3 /kWh).
- (2) Regular maintenance fee on oil (NT\$200) per 1,000 km/times, gear oil (NT\$80) per 2,000 km/times, air filter (NT\$300) per 5,000 km/times.
- (3) Regular maintenance of motor vehicles only needs to replace the gear oil.
- (4) Fuel tax is paid once per two years.
- (5) The battery warranty period is 3 years, and the battery replacement frequency is changed per 4 years.

Shyang-Chyuan Fang. " Study of the Behavior Pattern, Carbon Reduction Effect and Business Costs of Electric Motorcycles on Island". IOSR Journal of Business and Management (IOSR-JBM), Vol. 21, No. 4, 2019, pp. -.16-28