

## Reducing Call Blocking In GSM

Er. Dinesh Kumar<sup>1</sup>, Er. Manpreet Kaushal<sup>2</sup>

<sup>1</sup>Research Scholar Deptt. Of Electronics and Comm.Engg. ASRA College of Engineering & Technology  
Bhwanigarh (India)

<sup>2</sup>Assistant prof. Deptt. Of Electronics and Comm.Engg ASRA College of Engineering Technology Bhwanigarh  
(India)

**Abstract:** All GSM Service Provider uses KPI (Key Performance Indicator) to monitor their quality of service (QOS) Performance. Nowadays major issue is call block in GSM. So if optimization major issue is call block in GSM. So RF optimization and drive test is tool to find reason of call drop. To improve the the performance of the service provide. In this research paper some practical cases and solutions are adopted to reduce the call and increase the customer and profit of the service. Major parameters Rxlevel, Handover failuer, Rxquality, C/A worst, etc. Drive test tool Ascom TEMS 16.3.1 and analyser mapinfo 9.3 used to perform drive test and analyse log files recoded in TEMS to find problem and give the si\olution of call drop. In addition the RF drive test simulation results is attached which can clearly shows that call drop id reduced and improvement in the parameter

**Keywords:** Gsm; Rf; Tems; Mapinfo; C/I

### I. Introduction

The GSM network is divided into two systems. Each of these systems are comprised of a number of functional units which are individual components of the mobile network.

Thetwo systems are:

- Switching System (SS)
- Base Station System (BSS)

In addition, as with all telecommunications networks, GSM

networks are operated, maintained and managed from computerized centers.[5]

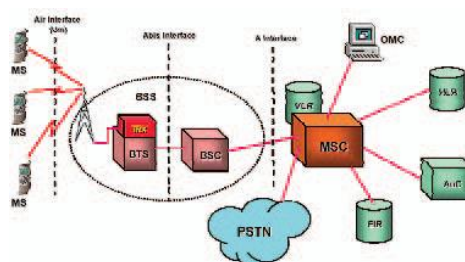


Fig-1 GSM Architecture

The Network and Switching Sub-system (NSS) – comprising an MSC and associated registers Several interfaces are defined between different parts of the system:

As there are limitation of frequency spectrum hence frequency reuse principle is adopted. In GSM we are using 890-915 Mhz and 935-960 Mhz Band[6].

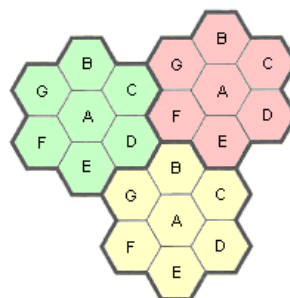


Fig-2 Frequency reuse

IN the research paper we have done pre drive test and post drive test and we analyses the no. call dropped, blocked call and handover failure are reduced.

## II. Methodology

### A. About software

TEMS 16.3.1 is drive test tool for measuring and monitoring the network parameter.

The supported networks for this tools are:

- GSM
- WCDMA
- HSPA
- LTE
- CDMA

TEMS investigation is an effective for measuring and monitoring the digital network . The data is collected by the TEMS investigation is stored in laptop. The measurement results provides useful information for network optimization , verification, and maintenance purpose. The result can be easily viewed by using TEMS analysis tool Mapinfo. But before start drive test tool kit should be ready. The drive test tools as follows

- TEMS software
- Drive test mobile phone (e.g. Ericsson TEMS)
- External vehicle mounted GPS
- Laptop with drive test software and GPS connection capability and data cables, multi-connector port etc.
- Car Inverter
- Car

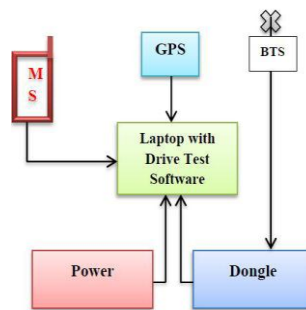


Fig-3 Drive test system

Connect the drive test kit properly as shown in figure. After connecting the drive test kit prepare the drive test route and then start drive test. The windows of tems software as shown in figure.

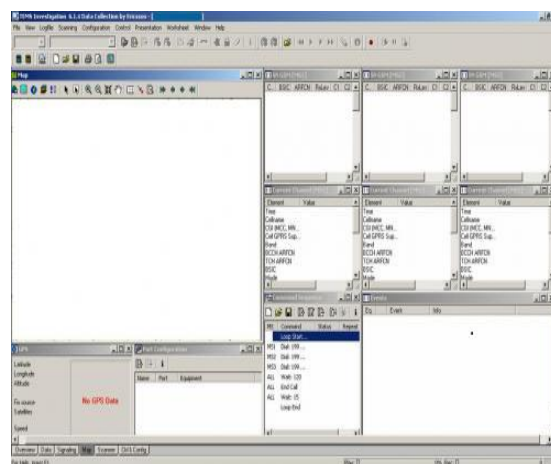


Fig4- Tems Software

Before state the drive test we should ensure that complete kit is connected properly, also ensure that all devices connoted are working properly.

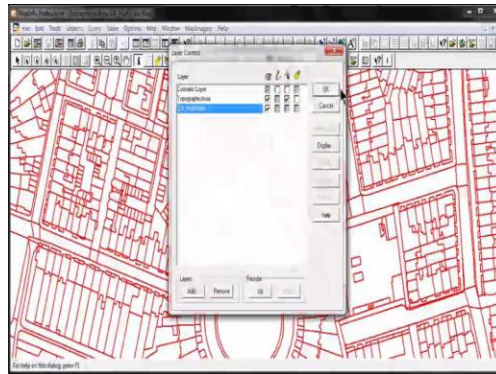


Fig5- Mapinfo Professional Software

After measurement data has been analyzed which is recoded through TEMS software during drive test, the that data will converted to .tab file in order to allow it to be opened on Mapinfo Professional as shown in figure 5. Mapinfo professional used to perform the calculation such as percentage of coverage and quality. Mapinfo opens the .tab files converdet by the TEMS investigation. So if we want to open the file in mapinfo we need to convert it to the tab file first.

### Drive Test Route

Now after connecting and check the kit we start drive test , first we done pre drive test . in the pre drive test we analysis the network. In the drive test we record the files for the long call and short call. We will connect the sony ericsson TEMS handset. We will keep MS1 in idle mode MS2 in dedicated mode in short call and MS3 in also dedicated mode but for long call. For connecting call MS2 and MS3 we will run script which made MS2 and MS3 in dedicated mode. MS2 connecting in short call after a short period the call will be disconnected and again connected vice versa. The long call will be connected till the drive is over. The log files are saved in folder on laptop memory. the results of pre drive test recorded as follows

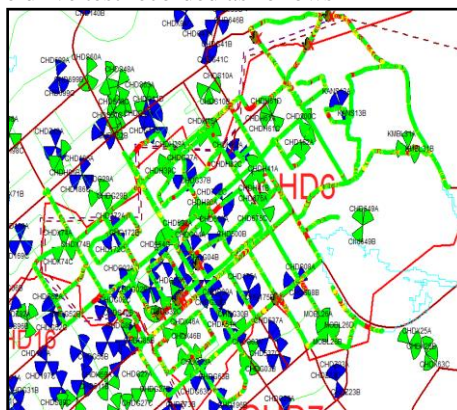


Fig6- Drive test route

Fig6 shows the drive test route where we have to find the call drop and optimize the call drop.

### III. Analysis and Results

In this research paper we will discuss about the call block in long call. Fig- shows the result generated by the TEMs from the log files saved during the drive test.

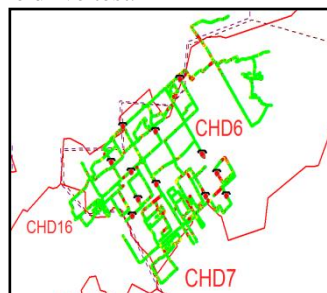


Fig7- Short Call blocking before optimization

In the figure we see the no. of blocked call during the Short call. There are so many call block find during the drive test. Our challenge is to reduce the call blocking.

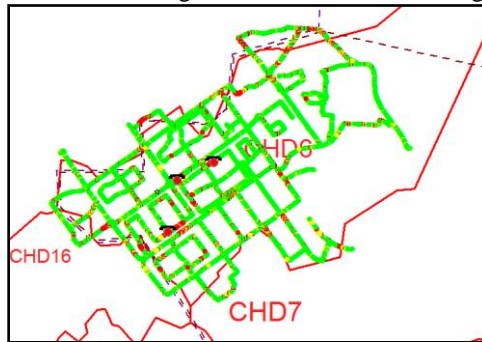


Fig8- Short Call blocking after optimization

In the figure 8 shows no short call blocking after optimization. We need to increase the time slot of the BTS to reduce the no. block call. The result is shown in the figure.

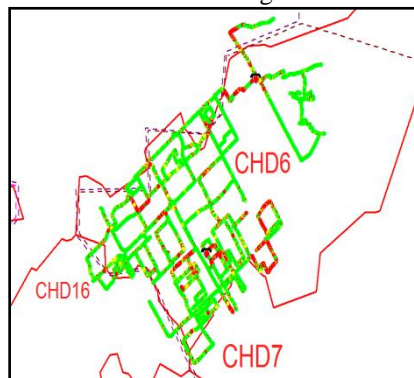


Fig9- Long Call blocking before optimization

In the figure 9 shows the long call blocking during the drive test. We will reduce the block call and drive test performs again.

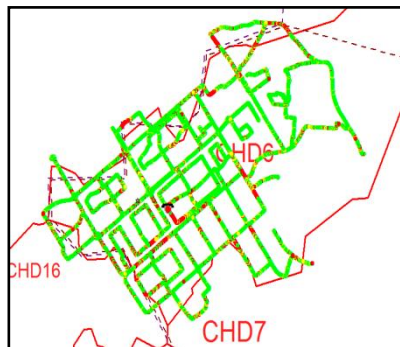


Fig10- Long Call blocking after optimization

The figure shows the Long call blocking are reduce after the optimization.

Event	#(no.of)	Relationship	#Cell	#Log
Handover IntraCell	4	-	-	5, 61
Missing GSM Neighbor, GSM Symmetry	2	-	-	36, 61
Blocked Call	2	-	-	39, 54
Call Attempt	22	-	-	9, 22, 31, 36, 39, 44, 45, 47, 53, 54, 61
Call Setup	12	-	-	9, 22, 31, 36, 39, 44, 45, 47, 53, 54, 61
Dropped Call	10	-	-	18, 30, 35, 36, 39, 47, 52, 54, 61
Handover	244	-	-	1, 3, 4, 5, 9, 10, 11, 12, 13, 14, 16, 17, 22, 25, 26, 27, 28, 29, 30, 31, 32, 33, 34, 35, 36, 38, 39, 40, 42, 43, 45, 46, 47, 48, 49, 50, 53, 54, 55, 56, 57, 58, 59, 60, 61
Handover Failure	10	-	-	18, 29, 39, 42, 43, 45, 47, 61
Routing Area Update	16	-	-	18, 20, 22, 30, 36, 39, 47, 52

Fig 11-Long call block before optimization

In the fig 11 shows the report generated by the TEMS software fir the optimization purpose. In the figure shows the no. of blocked call no. hand of failure no. hand over etc. Which are helpful foe us for optimization purpose

Event	#[no.of]	Relationship	#Cell	#Log
Handover Intracell	24	-	-	3,5,6,7,8,9,10,11
Handover Intracell Failure	2	-	-	11
Blocked Call	1	-	-	10
Call Attempt	5	-	-	3,10,11
Call Setup	4	-	-	3,10,11
Dropped Call	6	-	-	1,3,7,10,11
Handover	322	-	-	1,2,3,4,5,6,7,8,9,10,11
Handover Failure	5	-	-	2,8,9,11
Routing Area Update	4	-	-	3,10,11

Fig 12- Long call block after optimization

Event	#[no.of]	Relationship	#Cell	#Log
Blocked Call	13	-	-	2,10,11,12,15,18,29,42,43,44,47,53
Call Attempt	273	-	-	1,2,3,4,5,7,8,9,10,11,12,13,14,15,16,17,18,19,20,21,22,23,24,25,26,27,28,29,30,31,32,33,34,35,36,37,38,39,40,41,42,43,44,45,46,47,48,49,50,52,53,54,55,56,57,58,59,60,61
Call Attempt Retry	19	-	-	3,5,10,12,14,16,22,33,35,39,42,43,47
Call Setup	255	-	-	1,2,3,4,5,7,8,9,10,11,12,13,14,15,16,17,18,19,20,21,22,23,24,25,26,27,28,29,30,31,32,33,34,35,36,37,38,39,40,41,42,43,44,45,46,47,48,49,50,52,53,54,55,56,57,58,59,60,61
Dropped Call	4	-	-	17,42,44,54
Handover	187	-	-	1,3,4,5,7,8,9,10,11,12,13,14,15,16,17,18,19,20,21,22,25,27,29,30,31,32,33,34,35,36,39,40,42,43,45,46,47,48,49,50,52,54,55,56,58,60,61
Handover Failure	11	-	-	11,16,17,18,27,30,44,47
Handover Intracell	7	-	-	6,14,30,33,54
Routing Area Update	84	-	-	1,3,4,5,6,7,10,11,12,16,18,19,20,22,25,42,48,30,31,33,34,35,36,43,44,45,47,48,49,50,52,53,54,55,58,61

Fig 13- short call block before optimization

In the fig 13 shows the report generated by the TEMS software fir the optimization purpose. In the figure shows the no. of blocked call no. hand of failure no. hand over etc. Which are helpful foe us for optimization purpose .

Event	#[no.of]	Relationship	#Cell	#Log
Handover Intracell	7	-	-	2,3
Blocked Call	5	-	-	2,3,6
Call Attempt	257	-	-	1,2,3,4,5,6
Call Attempt Retry	14	-	-	2,3,4
Call Setup	252	-	-	1,2,3,4,5,6
Dropped Call	3	-	-	2,4
Handover	241	-	-	1,2,3,4,5,6
Handover Failure	19	-	-	1,2,4,6
Routing Area Update	61	-	-	1,2,3,4,6

Fig 14- short call block before optimization

Fig 13 and fig 14 shows the call drop before and after optimization. We can see tha the no. of call dropped after optimization are reduced as we have seen in the fig 11 and fig 12. We will discuss the reason of call drop and remedy action taken by the Rf engg.

**IV. Conclusion**

Telecommunication industry is moving so fast as to cater needs from user. Trends of lifestyle and mobile devices availability contribute to fast growth of telecommunication industry. Hence operator needs to comply the needs with less investment as well as giving the best services in term of coverage and quality. Based on analysis and result, it is proven that the call drop can be reduced by optimization.

### References

- [1]. Norsuzila Ya'acob ,Muhammad Salihin Ahmad Azmil, Khairul Rahim, Khairudin And Suzi Seroja, 'Coverage And Quality Radio Analysis For Single Radio Access Network Technology In GSM' . 2014 2nd International Conference On Electrical, Electronics And System Engineering (ICEESE).
- [2]. Mohammad Aiman Zainali,Azita Laily Yousof, Salahuddin Al. 'Drive Test Measurement Between Maxis 2G And 3G Networks In Uitm Shah Alam Campus'. 2013 IEEE Student Conference On Research And Development (Scored), 16 -17 December 2013, Putrajaya, Malaysia.
- [3]. Nenad Mijatovic, Ivica Kostanic And Sergey Dickey. Comparison Of Receive Signal Level Measurement Techniques In Gsmcellular Networks. IEEE CCNC 2008 Proceedings.
- [4]. Vlatko Lipovacl, Borivoj Modlic And Antun Sertic. PRACTICAL TESTING OF GSM CO-CHANNEL INTERFERENCE 0-7803-766 1 -7/031\$17.0082003 IEEE.
- [5]. Amir Temur, Tashkent, Uzbekistan. RF Optimization Issues In GSM Networks. 978-1-4244-6904-8/10/\$26.00 ©2010 IEEE
- [6]. Giriraj Sharma, Ashish Kumar Bansal.' A Practical Approach To Improve GSM Network Quality By RF Optimization'. International Journal Of Engineering And Advanced Technology (IJEAT)ISSN: 2249 – 8958, Volume-3, Issue-4, April 2014
- [7]. Atif Mugdam Jaheldeen, Dr. Khalid Hamid Bilal2 And Dr. Amin Babiker A/Nabi Mustafa ' Handover Drive Test' International Journal Of Engineering, Applied And Management Sciences Paradigms, Vol. 22, Issue 01
- [8]. Dheepak. M, Dr. S. V. Saravanan 'RF OPTIMIZATION FOR QUALITY IMPROVEMENT IN GSM NETWORK' International Journal Of Electrical Engineering & Technology (IJEET) 6, Issue 8, Sep-Oct, 2015, Pp.53-62, Article ID: IJEET\_06\_08\_006
- [9]. U S Rahman, M. A. Matin, M R Rahman ' 'A Practical Approach Of Planning And Optimization For Efficient Usage Of GSM Network' International Journal Of Communications (IJC) Volume 1 Issue 1, December 2012
- [10]. Andrea De Pasquale, Nicola Pi0 Magnani, Paolo Zanini ' OPTIMIZING FREQUENCY PLANNING IN THE GSM SYSTEM' 0-7803-5106-1/98/\$10.00 0 1998 IEEE
- [11]. C.N.Konstantinopoulou, K.A.Koutsopoulos, G.L.Lyberopoulos And M.E.Theologou ' Core Network Planning, Optimization And Forecasting In GSM/GPRS Networks' 0-7803-6684-O/OO/\$L O.OO 0 2000 IEEE.
- [12]. Yuelin Du, Jingjing Wang ' The Research And Application Of GSM Network Coverage Based On High-Speed Railway' 978-1-4244-8165-1/11/\$26.00 ©2011 IEEE
- [13]. Tobias P'Ogel, Lars Wolf ' Optimization Of GSM/UMTS Inter-System Handover Times Provided By Connectivity Maps' 2013 International Conference On Connected Vehicles And Expo (ICCVE)
- [14]. Rajesh Kumar Upadhyay, 2Vijay Kumar Singh, 3Rajnish Kumar, ' PERFORMANCE ANALYSIS OF GSM NETWORK' International Journal Of Advance Research In Science And Engineering Http://Www.Ijarse.Com IJARSE, Vol. No.3, Issue No.5, May 2014 ISSN-2319-8354(E)
- [15]. B.Venkatasai Sireesha Dr.S.Varadarajan, Vivek And Naresh 'Increasing Of Call Success Rate In GSM Service Area Using RF Optimization' B.Venkatasai Sireesha, Dr.S.Varadarajan, Vivek And Naresh/ International Journal Of Engineering Research And Applications (IJERA) ISSN: 2248-9622 Wwww.Ijera.Com Vol. 1, Issue 4, Pp. 1479-1485 1479
- [16]. Madhusmita Panda1 And Saraju Prasad Padhy2 ' Traffic Analysis And Optimization Of GSM Network' IJCSI International Journal Of Computer Science Issues, Special Issue, ICVCI-2011, Vol. 1, Issue 1, November 2011ISSN (Online): 1694-0814
- [17]. Rappaport Theodore S. "Modern Wireless Communication System,3G WCDMA (UMTS)." Wireless Communication Principles Andpractice. P550, 2010.
- [18]. Mattar, N.A.B., Et Al. Measuring And Analyzing The Signal Strengthfor Celcom GSM [019] And Maxis [012] In Uitm Shah Alam In Research And Development, 2002. Scored 2002.Student Conference On. 2002.
- [19]. TENMS Investigation User's Manual, 19.3. Ascom.