

Formation Of Nano-Emulsion

Hariom Rajput*, Mr. Sahil

Bhopal Madhya Pradesh

Abstract:

The droplet size distribution of an emulsion governs emulsion properties such as long-term stability, texture and optical appearance. Consequently, means to control the droplet size during emulsification are of interest when well-defined emulsion properties are needed. In this work, we study emulsions consisting of water, paraffin oil and a mixture of non-ionic surfactants and fatty alcohols by means of laser light scattering. We investigate the influence of the route of preparation as well as the surfactant concentration on the droplet size distribution. Above a critical surfactant-to-oil ratio and following the standard way of emulsion phase inversion, a significant amount of oil droplets with diameters less than 1 μm were obtained. When changing the way of emulsification and thereby avoiding a phase inversion to occur, such fine droplets are absent and the droplet size distribution is solely governed by the input of mechanical energy. We demonstrate that emulsification by the phase inversion method makes use of two effects for the achievement of finely dispersed oil-in-water emulsions. The lamellar or bicontinuous structure formed by the surfactant at the inversion point determines the size of the resulting droplets while the corresponding minimal interfacial tension facilitates the droplet formation, explaining why the droplet size distribution only depends on the weight ratio between surfactant and oil rather than on the water concentration.

Keywords: Emulsion; Catastrophic phase inversion; Emulsification; Phase inversion temperature (PIT); Emulsion inversion point (EIP).

Date of Submission: 08-12-2023

Date of Acceptance: 18-12-2023

I. Introduction :

Macroemulsions are dispersions of at least two non-miscible liquids. They are thermodynamically unstable systems that are stabilized kinetically. Consequently, the stability of an emulsion depends both on its composition and the size of the emulsion droplets. Typically, the droplet size of conventional emulsions is larger than 1 μm , making these droplets susceptible to gravity forces. Depending on the preparation method, different droplet size distributions might be achieved, explaining why the route of preparation can have an influence on the emulsion stability. Emulsions with droplet sizes between those of conventional emulsions and microemulsions, i.e. with a typical size range of 20–500 nm are termed mini-emulsions [1], ultrafine emulsions [2], submicron emulsions [3], translucent emulsions [4] and nano-emulsions [5,6]. Due to their small droplet size, nano-emulsions may appear transparent, and Brownian motion prevents sedimentation or creaming, hence offering increased stability. In contrast to microemulsions, nano-emulsions are metastable and can be diluted with water without changing the droplet size distribution [6].

The preparation of emulsions with droplet sizes in the submicrometer-range may be performed mechanically, which involves high-energy input that is generally achieved by high-shear stirring, high-pressure homogenizers, or ultra-sound generators. The high-energy input leads to deforming forces that are able to break the droplets into smaller ones, provided the Laplace pressure is overcome. Additionally, an increase of the surfactant content at the interface reduces the Laplace pressure [5]. Therefore, the smaller the droplet size, the more energy and/or surfactant is required, making this preparation route unfavorable for industrial applications.

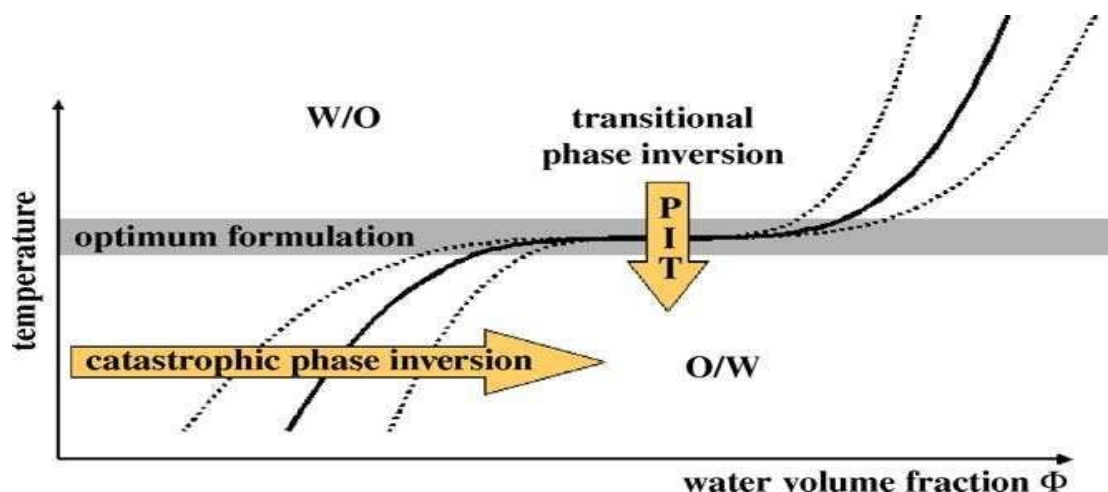


Fig. 1. Schematic illustration of both catastrophic and transitional phase inversion for the preparation of finely dispersed O/W emulsions. The solid black line marks the inversion locus, the dotted lines the hysteresis zone. Within the optimum formulation zone and at the inversion locus, the interfacial tension is minimal. During low-energy emulsification, this ultralow interfacial tension is employed for the formation of finely dispersed droplets, while the final emulsion should be far away from these regions to enhance emulsion stability.

When very small droplets are desired. However, submicron emulsions can also be obtained by employing the physicochemical properties of the system generally referred to as low-energy emulsification methods. These methods make use of changing the spontaneous curvature of the surfactant. For non-ionic surfactants, this can be achieved by changing the temperature of the system, forcing a transition from an oil-in-water (O/W) emulsion at low temperatures to a water-in-oil (W/O) emulsion at higher temperatures (transitional phase inversion). During cooling, the system crosses a point of zero spontaneous curvature and minimal surface tension, promoting the formation of finely dispersed oil droplets (see vertical arrow in Fig. 1). This method is referred to as phase inversion temperature (PIT) method [6–9]. Instead of the temperature, other parameters such as salt concentration or pH value may be considered as well, generalized by considering the surfactant affinity difference (SAD) instead of the temperature alone [10].

Additionally, a transition in the spontaneous radius of curvature can be obtained by changing the water volume fraction (emulsion inversion point (EIP) method). By successively adding water into oil, initially water droplets are formed in a continuous oil phase. Increasing the water volume fraction changes the spontaneous curvature of the surfactant from initially stabilizing a W/O emulsion to an O/W emulsion at the inversion locus. This process is well known for short-chain surfactants which form flexible monolayers at the oil–water interface, resulting in a bicontinuous microemulsion at the inversion point. Also during this transition—referred to as catastrophic phase inversion—minimal interfacial tension are achieved and reported to facilitate the formation of fine droplets (horizontal arrow in Fig. 1) [10–13].

In addition to the low interfacial tension, the formation of a bicontinuous or lamellar structure with a characteristic, surfactant-dependent repeat distance at the point of phase inversion has been mentioned to play a role for the formation of submicrometer-sized droplets [14].

In the present work, the preparation of O/W emulsions stabilized by a mixture of two non-ionic surfactants commercially used for the formulation of creams and lotions was studied in the light of the low-energy emulsification methods discussed above. We demonstrate that also for these long-chain surfactants phase inversion and nano-emulsion formation occur. The influence of the preparation route was investigated by analyzing the droplet size distribution of oil-in-water emulsions obtained by pouring the water phase into the oil and vice versa. We observed that a critical amount of surfactant is needed for the preparation of submicrometer-sized droplets by the emulsion inversion point method. Furthermore, we studied three surfactant-to-oil weight ratios and successively added water, thereby mapping parts of the surfactant/oil/water phase diagram. The final droplet size does not depend on the amount of water added to the system, demonstrating that the droplet size is determined by the surfactant-to-oil weight ratio rather than by the water content. This suggests that the droplet size depends on the distance given by the lamellar structure at the inversion point.

II. Material and methods:

Chemicals:

Emulsions were prepared with Cremophor® A6 and Cremophor® A25 (both BASF products), distilled water and paraffin oil (mineral oil, Riedel de Haen, Germany). Cremophor® A6 is a non-ionic surfactant

consisting of a polyethylene glycol alkyl ether (cetareth-6; CiEj with I = 16–18 and j = 6) and stearyl alcohol at a weight ratio 3:1. Cremophor® A25 is also known as cetareth-25 (CiEj with I = 16–18 and j = 25). The weight ratio Cremophor® A6/A25 was fixed at 7:3. Each sample (with compositions as indicated in Table 1) was prepared with a total mass of 300 g, and the water-to-oil weight ratio was kept constant at 3.5. Previous to Emulsification, the surfactants were mixed into the oil phase at 80 °C. The water (also at 80 °C) and oil phases were mixed with a Heidolph IKA stirrer at 150 rpm and subsequently homogenized with a T25 Ultra-Turrax at 13,000 rpm for 1 min. The samples were cooled at room temperature under moderate stirring at 150 rpm.

Table 1 : Water/ Cremophor A6/A25/paraffin oil emulsions compositions W_{water} , $W_{\text{Cremophor}}$ and $W_{\text{paraffin oil}}$ are the weight fractions (in wt.%) of water, Cremophor® mixture and paraffin oil, respectively. $W_{\text{Cremophor}}/W_{\text{paraffin oil}}$ indicates the surfactant-to-oil weight ratio.

W_{water}	$W_{\text{Cremophor}}$	$W_{\text{paraffin oil}}$	$W_{\text{Cremophor}}/W_{\text{paraffin oil}}$
75.8	2.5	21.7	0.12
73.9	5	21.1	0.24
71.9	7.5	20.6	0.36
70.0	10	20	0.5

For all compositions indicated in ,the water phase was poured into the oil phase (described as W into O or method A). Furthermore, an additional sample containing 10% Cremophor® mixture was prepared by pouring the oil phase into the water phase (O into W or method B).

For the mapping of the phase diagram, increasing amounts of water were added to mixtures of surfactant and oil at 80 °C. The total sample mass was 25 g. The surfactant-to-oil weight ratios correspond to those listed in Table 1. After weighing, each sample was shaken by hand, and the samples were stored in a thermostated chamber at 80 °C for several days in order to equilibrate the samples.

Methods:

The oil droplet size distribution was measured by means of laser light scattering (HORIBA La-900). A few drops of emulsion were injected into a bath of distilled water kept at 25 °C (sample dilution). The bath is continuously under agitation in order to disperse the oil droplets within the mixture. A few minutes after pouring, the laser light scattering measurement was performed.

III. Results:

The resulting droplet size distributions for the emulsions listed in Table 1 are given in Fig. 2. Depending on the surfactant concentration, the droplet sizes vary when prepared by method A. For 2.5 wt.% surfactant (surfactant-to-oil weight ratio of ~0.12), one large peak centered around 10 µm with a small additional peak around 0.6 µm is obtained. When increasing the surfactant content to 5 wt.% (surfactant-to-oil weight ratio of ~0.24), a truly bimodal distribution is observed with one peak around 8–10 µm and a second centered at ~0.6 µm. Further increasing the surfactant concentration to 7.5 wt.% results in one peak at 0.4 µm, while for the 10 wt.% Cremophor® mixture one peak at around 0.3 µm is obtained (surfactant-to-oil weight ratios of ~0.36 and 0.5, respectively). Interestingly, when prepared by method B, the emulsion with 10 wt.% surfactant mixture shows large droplets similar to the situation observed with 2.5 wt.% surfactant prepared by method A. As shown in Fig. 2e, a bimodal distribution is obtained with a large peak around 10 µm and a small one at 0.6 µm. As shown in , parts of the phase diagram were mapped by diluting samples with fixed surfactant-to-oil ratios (0.50, 0.36 and 0.12 marked by 1–3, respectively) with water and moderately shaking by hand. Upon dilution with water, the emulsion inversion point is reached and an oil-in-water emulsion is formed. As indicated in the phase diagram, the emulsion inversion point was crossed at a water content between 20 wt.% (for a surfactant-to-oil weight ratio of 0.12) and 25 wt.% (for a surfactant-to-oil weight ratio of 0.50). The resulting emulsion was examined between crossed polarizing filters, revealing birefringence for the obtained emulsions.

For the dilution lines marked by 1 and 2, corresponding to a surfactant-to-oil weight ratio of 0.50 and 0.36, all droplets observed were in the submicrometer-size range. As given in , the measured droplet size does not significantly change upon dilution with water. Laser light scattering revealed similar droplet size distributions, in location (centered around 0.5–0.3 µm), as well as in shape (monomodal with similar degree of polydispersity) to those obtained with the final emulsions.

IV. Discussion:

For the emulsions prepared by method A, it appears that the higher the surfactant concentration, the smaller the droplets that can be obtained. A gap exists between droplets with sizes centered at ~8–10 and 0.3–

0.6 μm rather than a continuous change in droplet size. This suggests two independent mechanisms of emulsification. The small-sized droplets do not originate from the mechanical energy input, since the smallest droplet size obtained by means of Ultra-Turrax homogenization is known to be around 1 μm [3,5]. On the other hand, the droplet size centered around 8–10 μm seems to agree with the mechanical disruption of the oil droplets (and possible partial coalescence of those oil droplets) and is therefore attributed to the homogenization process. For high surfactant concentrations, however, the mechanical emulsification becomes insignificant for emulsions prepared by method A, since only oil droplets with sizes around 0.4 μm (7.5 wt.% Cremophor[®] mixtures) are observed. This size is further reduced to 0.3 μm for 10 wt.% surfactant, indicating that high surfactant contents promote the non-mechanical emulsification process.

In contrast to the above observations, the sample containing 10 wt.% surfactant prepared by method B shows a distribution of droplets mainly centered at 8–10 μm , that can be attributed to the mechanical process alone. This indicates that the order of adding the phases (water poured into the oil phase or vice versa) plays a key role in the formation of small-sized oil droplets. Note that the case of emulsification by the PIT method is excluded, since this effect is independent of the order of adding the phases. Additionally, in the present experiments, all phases were subjected to the same heating and cooling procedure. Furthermore, the PIT of the Cremophor[®]A6/A25 surfactant mixture is above 100 °C.¹ Therefore, the change in the water volume fraction is assumed to be responsible for the non-mechanical emulsification, leading to submicrometer-sized oil droplets obtained by means of emulsion phase inversion.

A comparison of Fig. 2 and Table 2 demonstrates that no difference exists between the droplet size distributions of emulsions obtained by means of Ultra-Turrax and by manual shaking for surfactant-to-oil weight ratios of 0.36 and 0.50. This further emphasizes the fact that the non-Mechanical emulsification is a spontaneous process and already gentle mixing is sufficient to allow for the formation of submicrometer-sized droplets. As can be seen in Fig. 2, a critical surfactant-to-oil weight ratio (larger than 0.24) is needed to exclusively obtain submicrometer-sized droplets. On the other hand, upon addition of water, the droplet size distribution does not change. Significantly once the EIP is crossed (Fig. 3 and Table 2), suggesting that for spontaneous emulsification by phase inversion the surfactant-to-oil weight ratio is of importance rather than the amount of water. Our results suggest that the droplet size distribution is mainly controlled by the structure of the bicontinuous or lamellar phase formed during the phase inversion, the characteristic distance of which is dependent on the surfactant-to-oil ratio. This is in agreement with literature data [6] showing that for emulsions produced by the PIT method, the droplet.

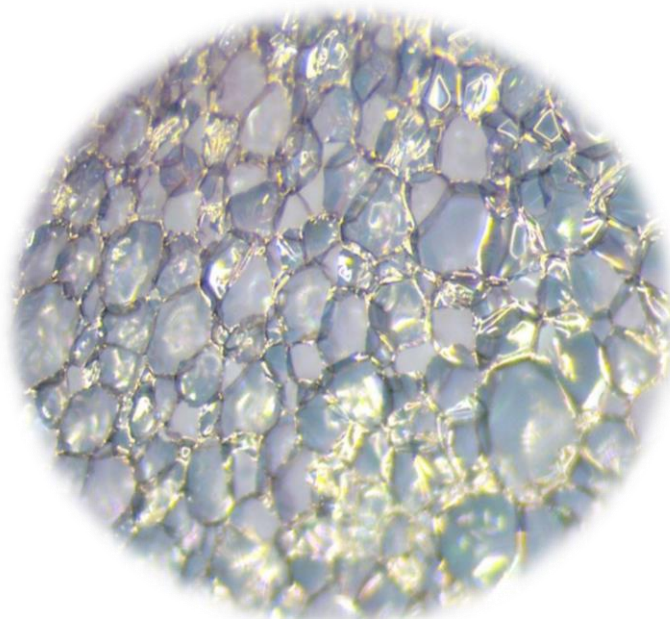


Fig. 5. Microscopic studies

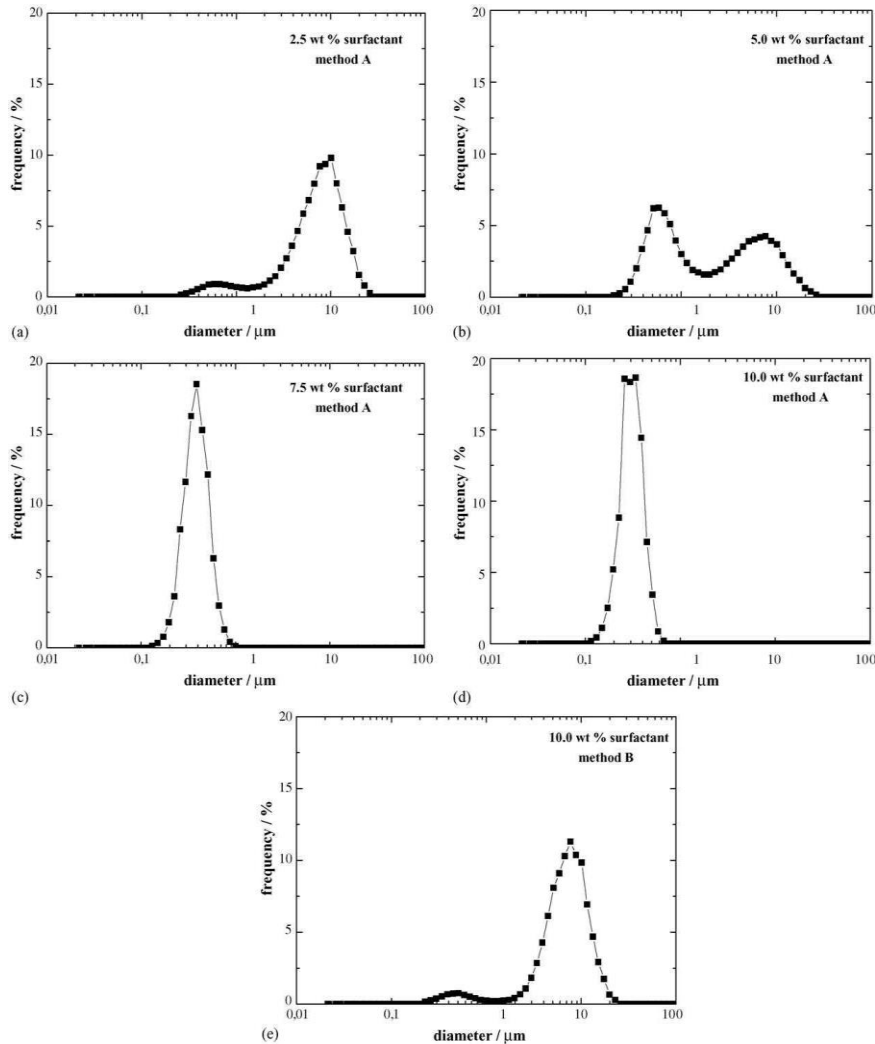


Fig. 2. Droplet size distributions depending on the surfactant concentration ((a) 2.5 wt.%; (b) 5 wt.%; (c) 7.5 wt.%; (d) 10 wt.%; (e) 10 wt.%) and the preparation method ((a)–(d) according to method A; (e) according to method B).

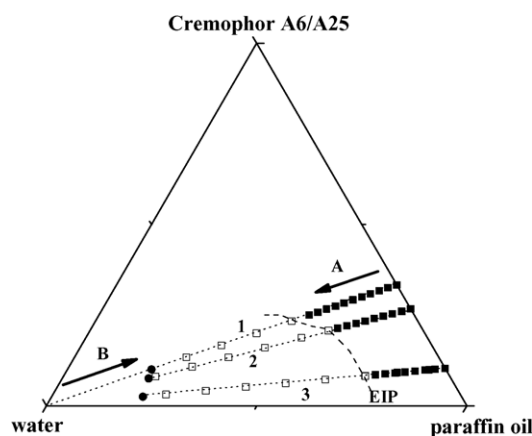


Fig. 3. Presentation of the different emulsification procedures in the phase diagram of water/Cremophor[®] mixture/paraffin oil at 80 °C (in weight fractions). The two different emulsification methods, water phase poured into the oil phase (A) and vice versa (B) are given by the arrows. The dashed line marks the emulsion inversion point (EIP). Dotted lines indicate dilution, leading to final emulsions (closed circles) with 10, 7.5, and 2.5 wt.% surfactant mixture, respectively (see Table 1). Open squares show samples for which oil-in-water emulsions were observed, while closed squares indicate compositions for which the phase separation has not yet occurred.

Table 2
Droplet sizes of emulsions with surfactant-to-oil ratios of 0.36 and 0.50, respectively, upon dilution with water

$W_{\text{paraffin oil}}$	$W_{\text{Cremophor}}$	W_{water}	$W_{\text{Cremophor}}/W_{\text{paraffin oil}}$	Droplet size (μm)
51.3	18.7	30	0.364	0.5
44	16	40	0.364	0.33
36.7	13.3	50	0.364	0.35
29.3	10.7	60	0.364	0.35
22	8	70	0.364	0.36
40	20	40	0.5	0.36
33.33	16.67	50	0.5	0.38
26.67	13.33	60	0.5	0.33
20	10	70	0.5	0.38

W_{water} , $W_{\text{Cremophor}}$ and $W_{\text{paraffin oil}}$ are the weight fractions (in wt.%) of water, Cremophor[®] mixture and paraffin oil, respectively. $W_{\text{Cremophor}}/W_{\text{paraffin oil}}$ indicates the surfactant-to-oil weight ratio. All particle size distributions are monomodal and centered at the given droplet size.

Size is governed by the structure of the bicontinuous phase, rather than the water content. The high surfactant-to-oil ratio used in this work results in a lamellar phase with a repeat distance of some few tens of nanometer. The observed droplets are, however, in the range of 300–500 nm. This discrepancy suggests that the droplets grow after formation by Ostwald ripening similar to what has been reported upon before [14]. Furthermore, this consideration suggests that the low interfacial tension associated with the inversion point, which is usually assumed to assist the droplet formation, might be of secondary importance. In order to illustrate the mechanisms involved in this low-energy emulsification process, the steps of submicron-droplet formation by phase inversion are given in the following. As the water phase is poured into the oil phase, the system starts as a W/O microemulsion [15]. Upon increasing the volume.

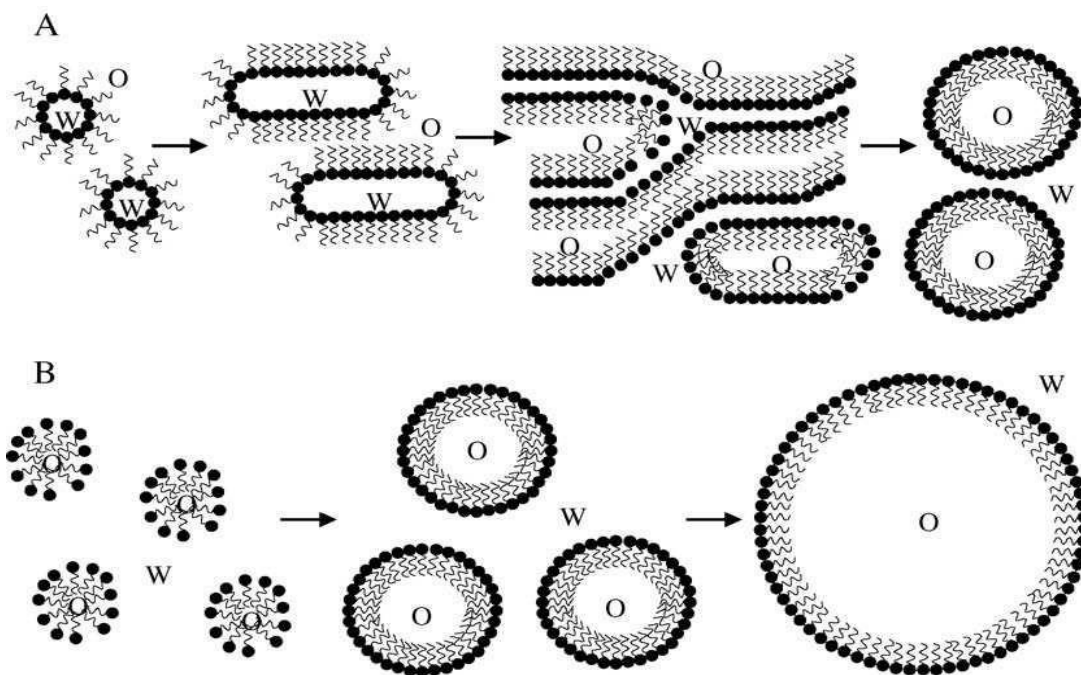


Fig. 4. Scheme of the emulsification procedure (W: water phase; O: oil phase). Method A: first water-in-oil droplets are produced; those inverted structures merge together to give elongated and bicontinuous or lamellar structures that finally decompose into submicrometer-sized oil droplets. Method B: small oil droplets are immediately produced and grow in size upon oil and surfactant addition. Their size is a result of the mechanical process only.

Fraction of water, water droplets merge together and bicontinuous or lamellar [15] structures are formed, which, after the EIP is passed, decompose into smaller oil droplets upon further increasing the water content. Further dilution with water does not change the droplet size at this stage of droplet formation. The decomposition into very finely dispersed droplets is facilitated by the fact that the interfacial tension is minimal at the EIP. A high surfactant concentration allows for a complete solubilization of the oil near the EIP [6], leading to monomodal emulsions with submicrometer-sized droplets. For low or medium surfactant concentrations, the oil solubilization is not complete, resulting in larger droplets that arise from mechanical emulsification. A critical surfactant concentration is therefore required to guarantee bicontinuous or lamellar structures, which in turn decompose into submicrometer-sized oil droplets after phase inversion. Considering the theoretical amount of surfactant required for stabilization of the final droplets, an estimated value of about 10% for the surfactant-to-oil ratio is obtained. This suggests that the surfactant used in our study is in excess to what is needed to stabilize the droplets. The fact that the final emulsions are birefringent indicates the existence of a liquid crystalline structure in the emulsions. We therefore suggest that a large amount of the surfactant is consumed in the external phase forming this crystalline structure. Small angle X-ray scattering (SAXS) experiments performed on this sample also affirm the existence of a crystalline structure [16]. This excess surfactant might, however, still contribute to the emulsion stability by increasing the viscosity of the external phase.

If the oil phase is added to the water phase (method B), no such transition through bicontinuous or lamellar structures (those structures remain to be better defined) occurs since a critical volume fraction of the oil phase cannot be reached. The two procedures are exemplified in Fig. 4

V. Conclusion:

The present results demonstrate the importance of the way of emulsification on the droplet size distribution. When emulsifying via emulsion phase inversion, finely dispersed oil droplets can be achieved, much smaller than by mechanical emulsification solely. We demonstrate that a critical surfactant concentration is necessary for emulsification via the EIP method. While low interfacial tension might facilitate the droplet formation, the resulting droplet size distribution mainly depends on the surfactant-to-oil ratio, suggesting that the size of the droplets is governed by the lamellar or bicontinuous structure formed at the inversion point.

References:

- [1]. A.J.F. Sing, A. Gracia, J. Lachaise, P. Brochette, J.L. Salager, *Colloid Surf. A* 152 (1999) 31.
- [2]. B.W. Brooks, H.N. Richmond, M. Zerfa, *Modern Aspects Of Emulsion Science*, Cambridge, 1998, Pp. 204-175.
- [3]. Batchelor Gk, *Brownian Diffusion Of Particles With Hydrodynamic Interaction*, *J Fluid Mech*, 1976; 74:1.
- [4]. C. Solans, J. Esquena, A.M. Forgiarini, N. Ulson, D. Morales, P. Izquierdo, N. Azemar, M.J. Garcia-Celma, *Absorption And Aggregation Of Surfactants In Solution*, Vol. 109, Marcel Dekker, New York, 2003.
- [5]. Calvo P, Lopez R, Vila-Jato JI, Alonso Mj, *Evaluation Of Cationic Polymer-Coated Nanocapsules As Ocular Drug Carriers*, *Colloid Polym Sci*, 1997; (275): 46-53.
- [6]. D. Morales, J.M. Gutierrez, M.J. Garcia-Celma, C. Solans, *Langmuir* 19 (2003) 7196.
- [7]. F. Shambil, *World Patent Wo* 89/11907.
- [8]. Forgiarini, J. Esquena, C. Gonzalez, C. Solans, *Langmuir* 17 (2001) 2076.
- [9]. F. Bouchama, G.A. Van Aken, A.J.E. Autin, G.J.M. Koper, *Colloid Surf. A* 231 (2003) 11.
- [10]. Ghosh Pk. And Murthy Rsr, *Microemulsions: A Potential Drug Delivery System*, *Curr Drug Deliv*, 2006; (3): 167-180.
- [11]. H. Nakajima, *Industrial Applications Of Microemulsions*, Marcel Dekker, New York, 1997.
- [12]. J.L. Salager, *Encyclopedia Of Emulsion Technology*, Vol. 3, Marcel Dekker, New York, 1988.
- [13]. J.L. Salager, L. Marquez, I. Mira, A. Pena, E. Tyrode, N.B. Zambano, *Absorption And Aggregation Of Surfactants In Solution*, Vol. 109, Marcel Dekker, New York, 2003.
- [14]. Kim Ck, Cho Yj. Gao Zg, *Preparation And Evaluation Of Biphenyl Dimethyl Dicarboxylate Microemulsions For Oral Delivery*, *J. Control. Release*, 2001; (70): 149-155.
- [15]. K. Shinoda, H.J. Saito, *Colloid Interface Sci.* 30 (1969) 258.
- [16]. Ko Kt, Needham Te, Zia H, *Emulsion Formulations Of Testosterone For Nasal Administration*, *Journal Of Microencapsulation*, 1998; (15): 197-205.
- [17]. Kabalnov A, Wennerstrom H, *Langmuir*, *Lubrication In Aqueous Solutions Using Cationic Surfactants: A Study Of Static And Dynamic Forces*, 1996; (12): 276-292.
- [18]. Lifshitz Im, Slezov Vv. J, *The Kinetics Of Precipitation From Supersaturated Solid Solutions*, *Phys Chem Solids*, 1961; 19-35.
- [19]. L. Taisne, B. Cabane, *Langmuir* 14 (1998).
- [20]. M. El-Aasser, C. Lack, J. Vanderhoff, F. Fowkes, *Colloid Surf.* 29 (1988) 103.
- [21]. P. Fernandez, L. Borrero, Y. Men, J. Rieger, V. Andreu, A. Kuhnle, *In Preparation*.
- [22]. Petsev Dn, Den Kov Nd, Kralchevsky P, *Flocculation Of Deformable Emulsion Droplets: I. Droplet Shape And Line Tension Effects*, *J Colloid Interface Sci*, 1995; (176): 201-213.
- [23]. Paqui Id, Jin-Feng, Jordi E, Tharward Ft, Joseph Cd, *The Influence Of Surfactant Mixing Ratio On Nanoemulsion Formation By The Pit Method*, *J Of Colloid And Int. Sci*, 2005; (285): 388-394.
- [24]. Restel S, Cauwet-Martin D, *Eur Patent Appl Ep* 842652 Al. 1998.
- [25]. Sznitowska M, Zurowaska-Pryczkowska K, Janiki S, Jarvinen T, *Miotic Effect And Irritation Potential Of Pilocarpine Prodrug Incorporated Into A Submicron Emulsion Vehicle*, *Int J Pharm*, 1999; (184): 115-120.
- [26]. Shinoda K, Lindman B. *Organized Surfactant Systems: Microemulsions*, *Langmuir* 3 (1987): P. 135-179.
- [27]. Stokes Gg. *On The Effect Of The Internal Friction Of Fluid On The Motion Of Pendulums*, *Philos Mag*, 1851, 1:337-339.

- [28]. Schwartz Js, Weisspapier Mr, Friedman Di, Enhanced Transdermal Delivery Of Diazepam By Submicron Emulsions Creams, *Pharm Res*, 1995; (12): 687-692.
- [29]. Suzuki T, Takei H, Yamazaki S, Formation Of Fine Three-Phase Emulsions By The Liquid Crystal Emulsification Method With Arginine B-Branched Monoalkyl Phosphate, *J. Colloid Interface Sci*, 1989; (129): 491-500.
- [30]. Tharwat F, Tadros, *Emulsion Science And Technology*, Wiley Publishers, 2009, P.57-65.
- [31]. Verwey E J W, Overbeek J H G. *Theory Of The Stability Of Lyophobic Colloids*. Amsterdam: Elsevier, 1948.
- [32]. Wagner J G, Gerard E S, Kaiser D G, The Effect Of The Dosage Form On Serum Levels Of Indoxole, *Clin Pharmacol Ther*, 1966; (7): 610-619.
- [33]. Wagner C. *Elektrochem*. 1961; (65), 581.